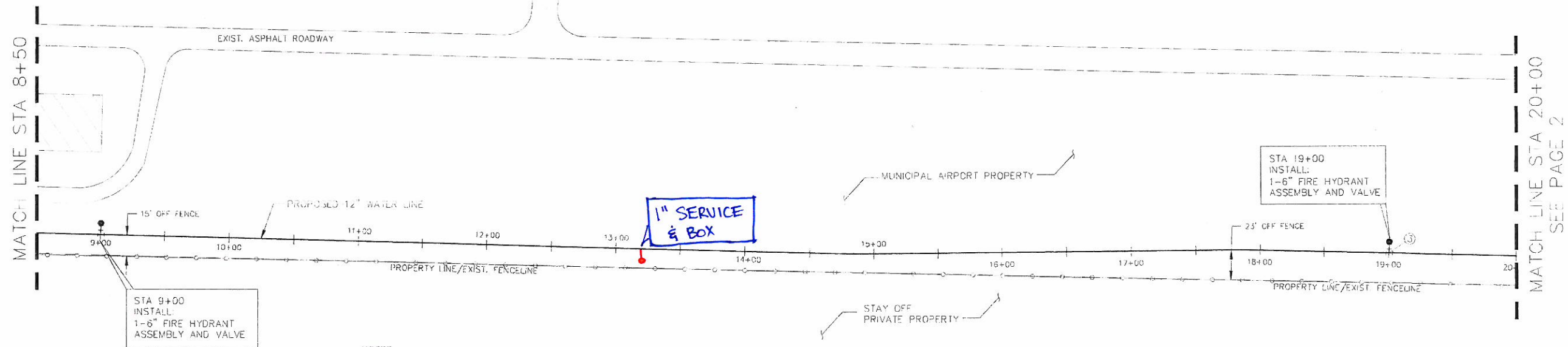
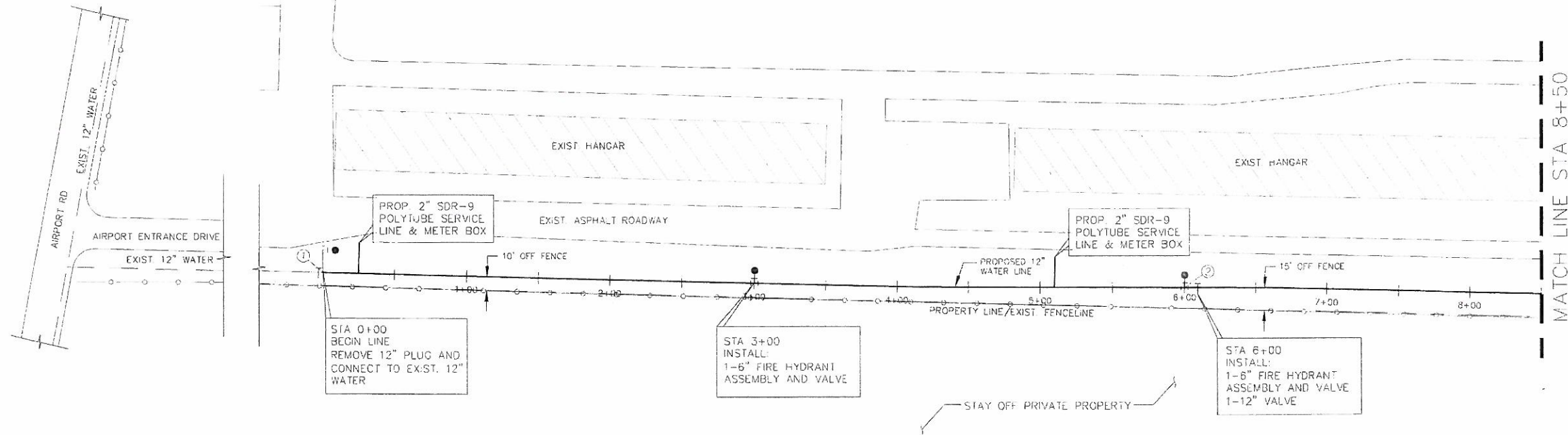
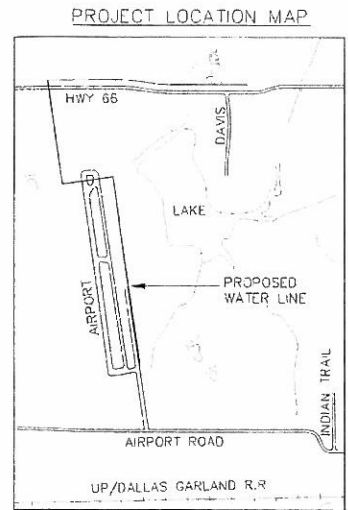


SCALE: 1" = 40'



NOTES

1. ALL WATER LINES TO BE MIN CLASS 200, DR 14.
2. INSTALL BLUE EMS DISKS ON THE WATER LINE AT EVERY CHANGE IN DIRECTION, VALVE, SERVICE AND EVERY 200' (IN STRAIGHT LINES).
3. CONTRACTOR IS RESPONSIBLE FOR LOCATION OF ALL EXISTING UTILITIES AND FOR ANY RELOCATIONS, DAMAGES, OR REPAIRS OF SAID EXISTING UTILITIES. EXISTING UTILITIES ON PLANS ARE APPROXIMATE.
4. USE CITY OF ROCKWALL STANDARD DETAILS AND NCTCOG 3RD EDITION DETAILS, AS MODIFIED BY CITY.
5. CONTRACTOR SHALL COORDINATE WITH AIRPORT OPERATOR WHILE WORKING ON AIRPORT PROPERTY.
6. ESTABLISH GRASS ON DISTURBED AREAS.
7. WATERLINE TO BE MINIMUM OF 5 FEET DEEP.
8. CONTRACTOR SHALL NOT UTILIZE ASPHALT ROADWAY IN AIRPORT FOR ACCESS. ANY DAMAGE DONE BY CONTRACTOR SHALL BE REPAIRED OR REPLACED AT NO EXPENSE TO THE CITY.

WARNING
EXISTING UTILITY LINE LOCATIONS VARIES. CONTRACTOR RESPONSIBLE FOR LOCATION OF ALL EXISTING UTILITIES AND ANY REPLACEMENT, REPAIR, OR DAMAGE TO ANY EXISTING UTILITIES. KEEP EXISTING UTILITIES IN SERVICE AT ALL TIMES

POINT TABLE			
NUMBER	NORTHING, Y=	EASTING, X=	DESCRIPTION
1	0	0	0+00
2	592.77	-93.66	FIRE HYDRANT
3	1876.29	-299.22	FIRE HYDRANT
4	2185.53	-346.03	45° BEND
5	2251.70	-435.80	45° BEND
6	2193.69	-779.25	45° BEND
7	2375.45	-872.32	90° BEND
8	2387.37	-776.17	90° BEND
9	3085.94	-894.01	STA 37+00

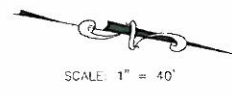
AS-BUILTS

12" WATER LINE
AIRPORT RD WATERLINE PHASE 2
ROCKWALL, TEXAS
CITY OF ROCKWALL
"THE NEW HORIZON"

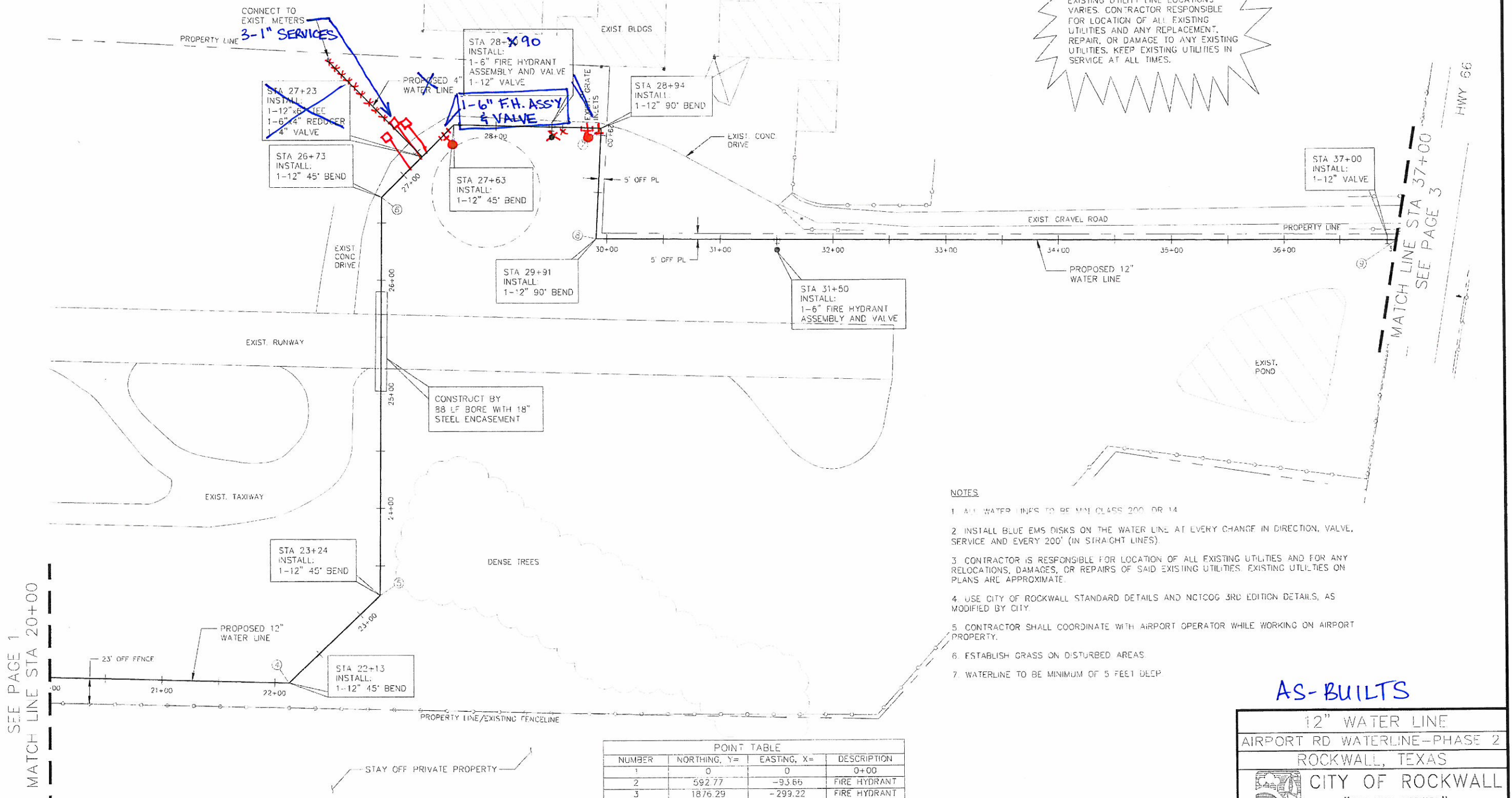
REVISION NO	REMARKS	DATE

DESIGNED: KRL
DRAWN: ACAD
JOB NO: DATE: FEB 2009 SHEET NO: 1 OF 3





WARNING
 EXISTING UTILITY LINE LOCATIONS VARIES. CONTRACTOR RESPONSIBLE FOR LOCATION OF ALL EXISTING UTILITIES AND ANY REPLACEMENT, REPAIR, OR DAMAGE TO ANY EXISTING UTILITIES. KEEP EXISTING UTILITIES IN SERVICE AT ALL TIMES.



SEE PAGE 1
 MATCH LINE STA 20+00

MATCH LINE STA 37+00
 SEE PAGE 3


HWY 66

NOTES

1. ALL WATER LINES TO BE MIN CLASS 200 OR 14
2. INSTALL BLUE EMS DISKS ON THE WATER LINE AT EVERY CHANGE IN DIRECTION, VALVE, SERVICE AND EVERY 200' (IN STRAIGHT LINES).
3. CONTRACTOR IS RESPONSIBLE FOR LOCATION OF ALL EXISTING UTILITIES AND FOR ANY RELOCATIONS, DAMAGES, OR REPAIRS OF SAID EXISTING UTILITIES. EXISTING UTILITIES ON PLANS ARE APPROXIMATE.
4. USE CITY OF ROCKWALL STANDARD DETAILS AND NCTCOG 3RD EDITION DETAILS, AS MODIFIED BY CITY.
5. CONTRACTOR SHALL COORDINATE WITH AIRPORT OPERATOR WHILE WORKING ON AIRPORT PROPERTY.
6. ESTABLISH GRASS ON DISTURBED AREAS.
7. WATERLINE TO BE MINIMUM OF 5 FEET DEEP.

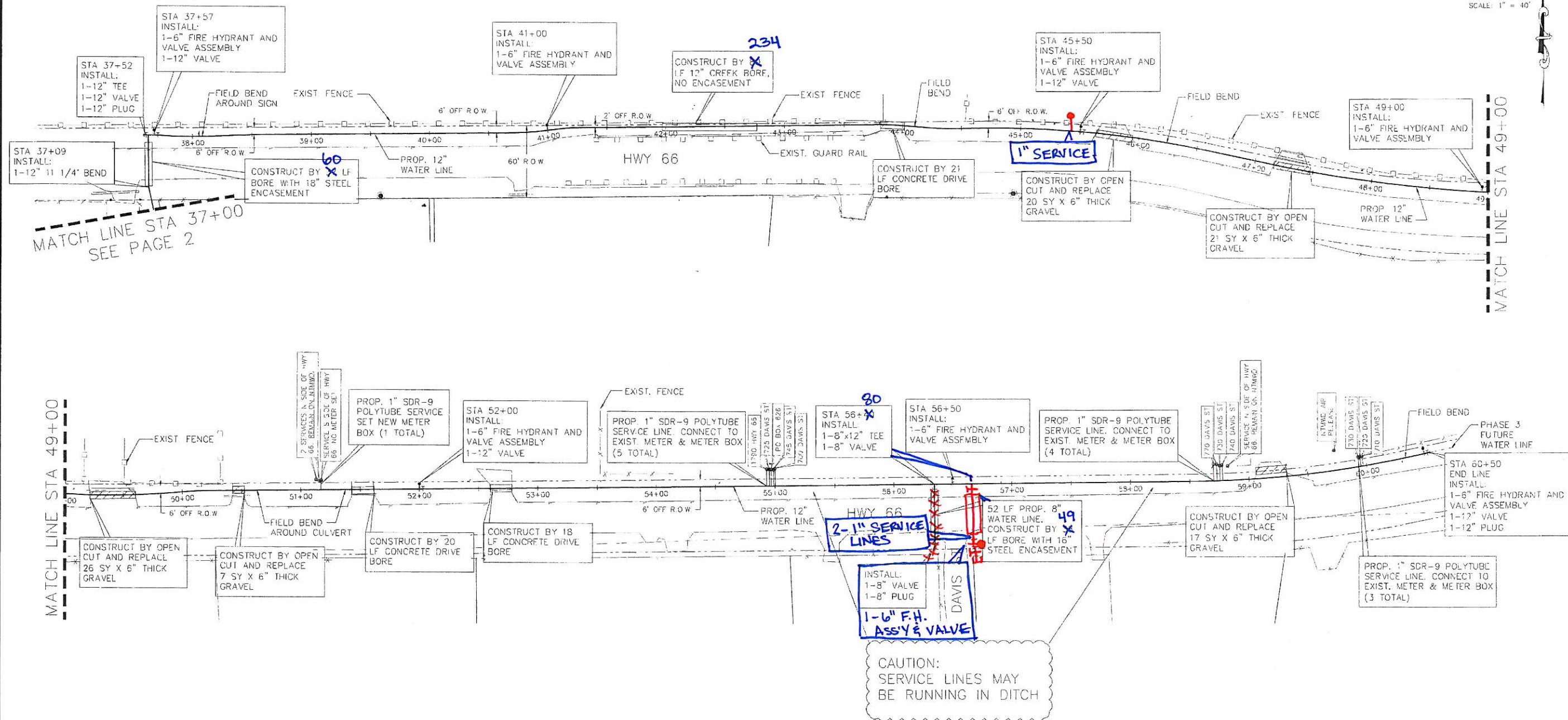
POINT TABLE			
NUMBER	NORTHING, Y=	EASTING, X=	DESCRIPTION
1	0	0	0+00
2	592.77	-93.66	FIRE HYDRANT
3	1876.29	-299.22	FIRE HYDRANT
4	2185.53	-346.03	45' BEND
5	2251.70	-435.80	45' BEND
6	2193.69	-779.25	45' BEND
7	2375.45	-872.32	90' BEND
8	2387.37	-776.17	90' BEND
9	3086.94	-894.01	STA 37+00

AS-BUILTS

12" WATER LINE
 AIRPORT RD WATERLINE-PHASE 2
 ROCKWALL, TEXAS

 CITY OF ROCKWALL
 "THE NEW HORIZON"

DESIGNED:	KRL
DRAWN:	ACAD
JOB NO.:	
DATE:	FEB 2009
SHEET NO.:	2 OF 3

Professional Engineer
 KATHLEEN R. LAPPEN
 94603
 LICENSED PROFESSIONAL ENGINEER



- NOTES**
1. ALL WATER LINES TO BE MIN CLASS 200, DR 14.
 2. INSTALL BLUE EMS DISKS ON THE WATER LINE AT EVERY CHANGE IN DIRECTION, VALVE, SERVICE AND EVERY 200' (IN STRAIGHT LINES).
 3. CONTRACTOR IS RESPONSIBLE FOR LOCATION OF ALL EXISTING UTILITIES AND FOR ANY RELOCATIONS, DAMAGES, OR REPAIRS OF SAID EXISTING UTILITIES. EXISTING UTILITIES ON PLANS ARE APPROXIMATE.
 4. USE CITY OF ROCKWALL STANDARD DETAILS AND NCTCOG 3RD EDITION DETAILS, AS MODIFIED BY CITY.
 5. CONCRETE DRIVE BORES DO NOT HAVE STEEL CASING.

WARNING
 EXISTING UTILITY LINE LOCATIONS VARIES. CONTRACTOR RESPONSIBLE FOR LOCATION OF ALL EXISTING UTILITIES AND ANY REPAIRMENT, REPAIR, OR DAMAGE TO ANY EXISTING UTILITIES. KEEP EXISTING UTILITIES IN SERVICE AT ALL TIMES.

AS BUILTS

12" WATER LINE
 AIRPORT RD WATERLINE—PHASE 2
 ROCKWALL, TEXAS
 CITY OF ROCKWALL
 "THE NEW HORIZON"

DESIGNED: KRI	DATE: FEB 2009	SHEET NO: 3 OF 3
DRAWN: ACAD		
JOB NO:		

STATE OF TEXAS
 KATHLEEN R. LAPPEN
 94603
 PROFESSIONAL ENGINEER

REVISION NO	REMARKS	DATE