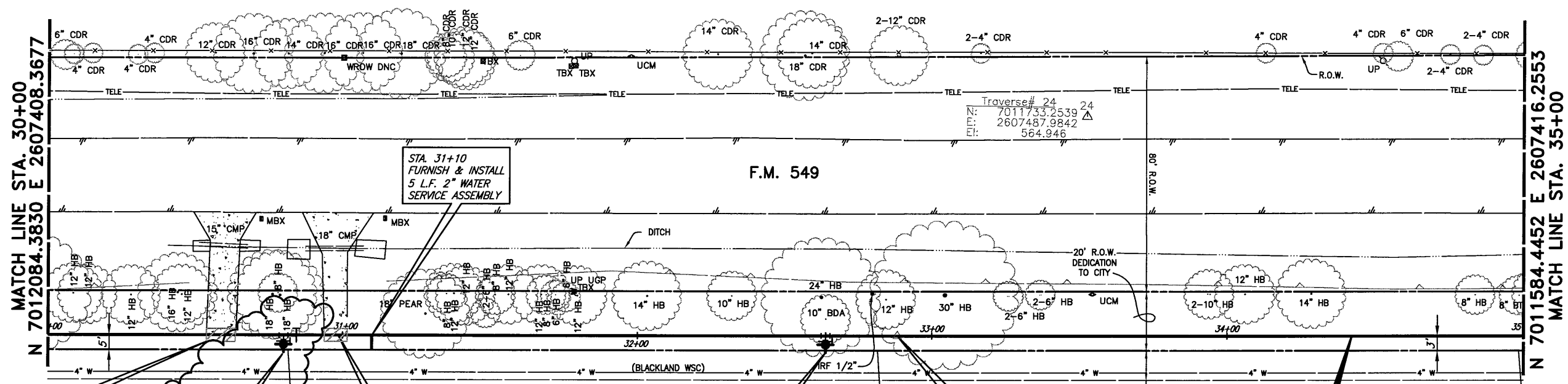


These plans and related specifications were prepared for construction of this specific project only. Reuse of these documents is not permitted without written authorization of Birkhoff, Hendricks, & Conway, L.L.P.

TREE REMOVAL = (NO PAY ITEM)



REMOVE & REPLACE 5 S.Y. REINFORCED CONCRETE DRIVEWAY

W.L. STA. 30+80  
FURNISH & INSTALL  
1-FIRE HYDRANT  
1-12"x6" TEE  
1-12" GATE VALVE  
1-6" GATE VALVE  
3 L.F. 6" PVC WATER LINE

REMOVE & REPLACE 4 S.Y. REINFORCED CONCRETE DRIVEWAY

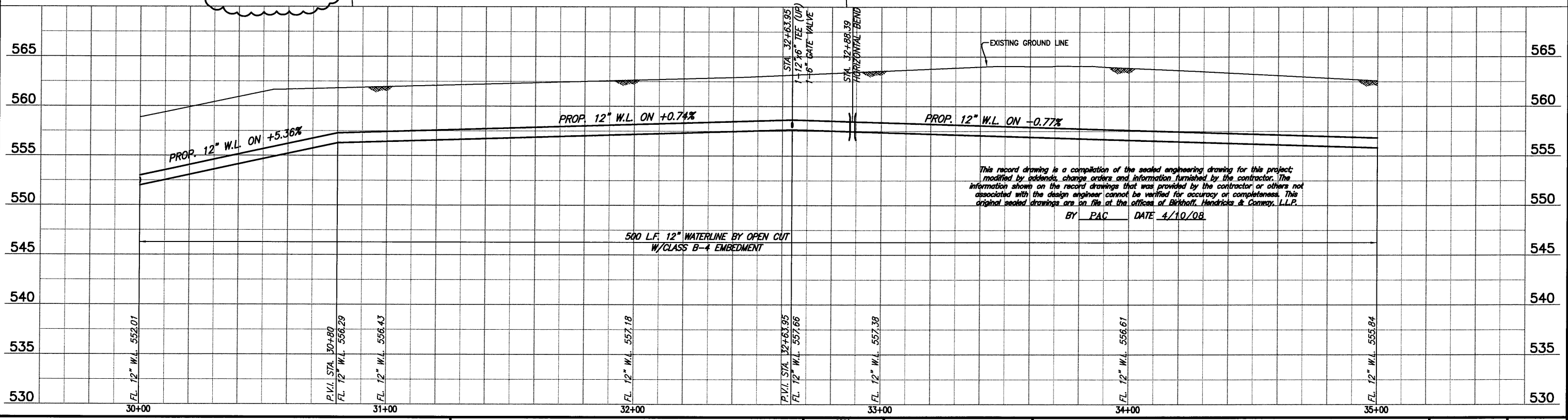
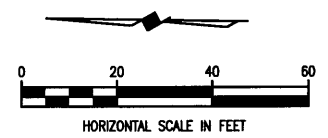
CAUTION!!  
BLACKLAND WSC WATER LINES IN AREA. CONTACT BLACKLAND WSC FOR LOCATES PRIOR TO CONSTRUCTION.

CAUTION!!  
RCH WSC WATER LINES IN AREA. CONTRACTOR TO CONFIRM LOCATIONS PRIOR TO CONSTRUCTION. CONTACT MR. DWIGHT LINDOP WITH RCH WSC AT 972-670-9091 PRIOR TO CONSTRUCTION.

W.L. STA. 32+63.95  
FURNISH & INSTALL  
1-FIRE HYDRANT  
1-12"x6" TEE (UP)  
1-6" 90° BEND  
1-6" GATE VALVE  
7 L.F. 6" PVC WATERLINE

W.L. P.I. STA. 32+88.39  
Δ=00°00' 05" LT.  
N 7011796.0327  
E 2607412.9141

FURNISH & INSTALL 12" WATER LINE



This record drawing is a compilation of the sealed engineering drawing for this project, modified by addenda, change orders and information furnished by the contractor. The information shown on the record drawings that was provided by the contractor or others not associated with the design engineer cannot be verified for accuracy or completeness. This original sealed drawings are on file at the offices of Birkhoff, Hendricks & Conway, L.L.P.

BY PAC DATE 4/10/08

**BIRKHOFF, HENDRICKS & CONWAY, L.L.P.**  
CONSULTING ENGINEERS  
7502 Greenville Ave., Suite 220  
Dallas, Texas  
(214) 361-7900



THESE DOCUMENTS ARE FOR BIDDING, CONSTRUCTION, AND PERMIT PURPOSES.

DATE: 6/12/07

**CITY OF ROCKWALL, TEXAS**  
F. M. 549 WATER LINE  
12" WATER LINE (LINE A)  
PLAN-PROFILE  
STA. 30+00 TO STA. 35+00

BHC PROJECT NO. 2006-150  
June, 2007

SHEET NO. **8**