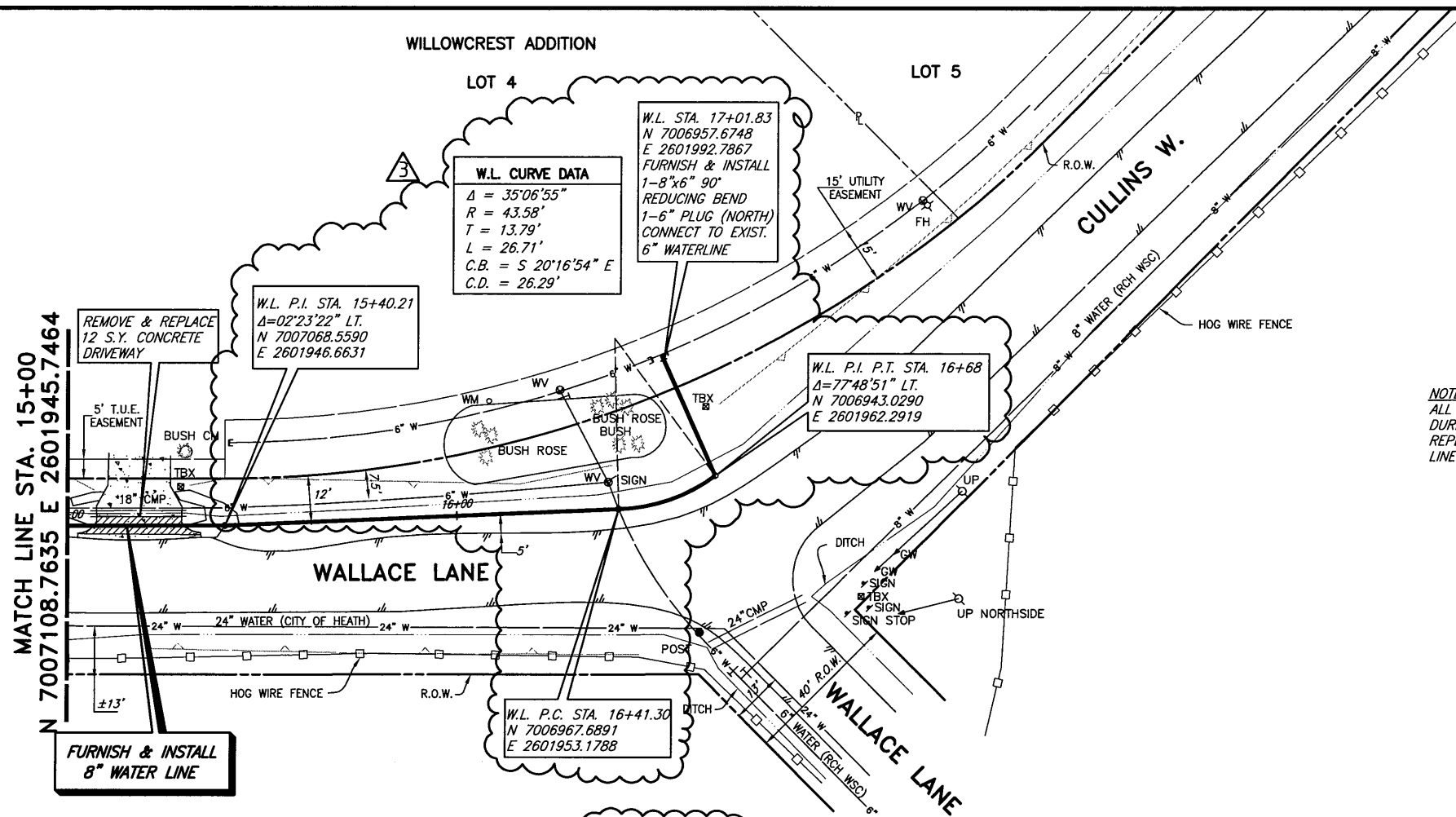
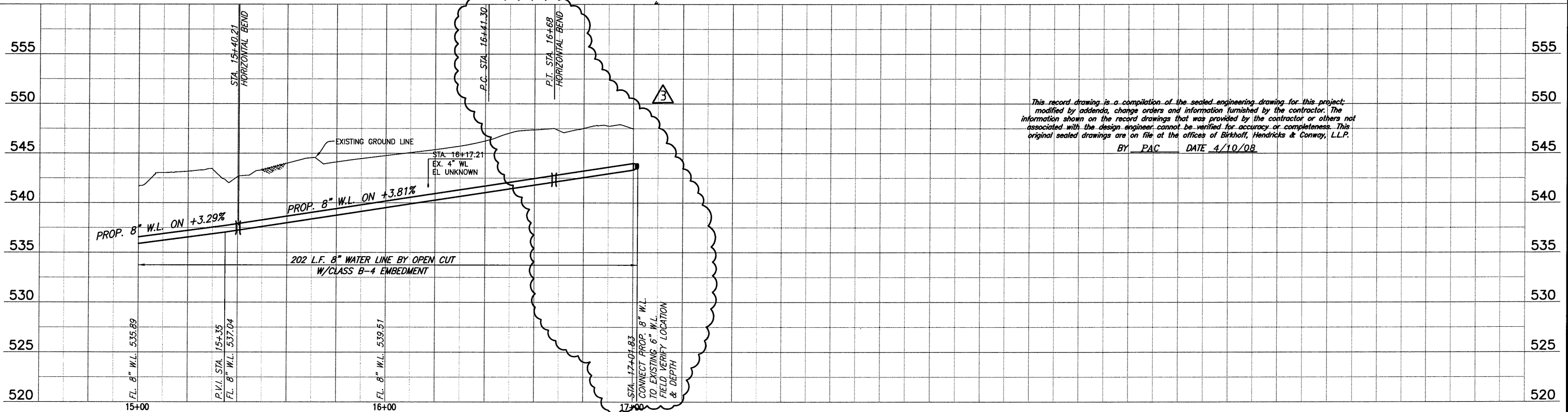
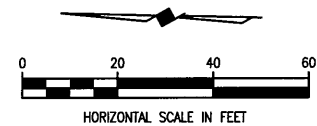


These plans and related specifications were prepared for construction of this specific project only. Reuse of these documents is not permitted without written authorization of Birkhoff, Hendricks, & Conway, L.L.P.



NOTE:
 ALL LANDSCAPING & HARDSCAPING ON LOT 4 DISTURBED DURING CONSTRUCTION SHALL BE TRANSPLANTED OR REPLACED WITH LIKE. PAYMENT SUBSIDIARY TO WATER LINE INSTALLATION.

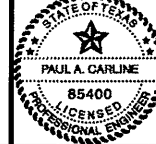
CAUTION!!
 RCH WSC WATER LINES IN AREA. CONTRACTOR TO CONFIRM LOCATIONS PRIOR TO CONSTRUCTION. CONTACT MR. DWIGHT LINDOP WITH RCH WSC AT 972-670-9091 PRIOR TO CONSTRUCTION.



This record drawing is a compilation of the sealed engineering drawing for this project; modified by addenda, change orders and information furnished by the contractor. The information shown on the record drawings that was provided by the contractor or others not associated with the design engineer cannot be verified for accuracy or completeness. This original sealed drawings are on file at the offices of Birkhoff, Hendricks & Conway, L.L.P.
 BY PAC DATE 4/10/08

FIELD CHANGE No. 3	1/3/08	REVISED PLUG LOCATION
--------------------	--------	-----------------------

BIRKHOFF, HENDRICKS & CONWAY, L.L.P.
 CONSULTING ENGINEERS
 7502 Greenville Ave., Suite 220
 Dallas, Texas
 (214) 361-7900



THESE DOCUMENTS ARE FOR
 BIDDING, CONSTRUCTION,
 AND PERMIT PURPOSES.
 DATE: 1/3/08

CITY OF ROCKWALL, TEXAS
WALLACE LANE WATER LINE
 8" WATER LINE (LINE C)
 PLAN-PROFILE
 STA. 15+00 TO STA. 16+32.21

BHC
 PROJECT NO.
 2006-150
 April, 2008

SHEET NO.
28