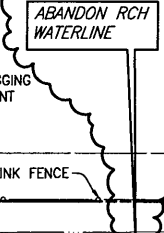


MATCH LINE STA. 5+00
N 7008108.5071 E 2601923.1055

OAKS OF BUFFALO WAY
ADDITION
PHASE II

LOT 2



REMOVE & REPLACE
9 S.Y. GRAVEL
DRIVEWAY

FURNISH & INSTALL
8" WATER LINE

REMOVE & REPLACE
11 S.Y. CONCRETE
DRIVEWAY

WILLOWCREST ADDITION

LOT 1

W.L. STA. 7+52.78
TRANSFER WATER
SERVICE

REMOVE & REPLACE
11 S.Y. CONCRETE
DRIVEWAY

W.L. STA. 8+00
N 7007808.5816
E 2601929.7886
FURNISH & INSTALL
1-FIRE HYDRANT
1-8"x6" TEE (UP)
1-6" 90° BEND
1-6" GATE VALVE
1-8" GATE VALVE
11 L.F. 6" WATER LINE

RCH WATERLINE
TO REMAIN IN
SERVICE

LOT 2

W.L. STA. 9+93.30
TRANSFER WATER
SERVICE

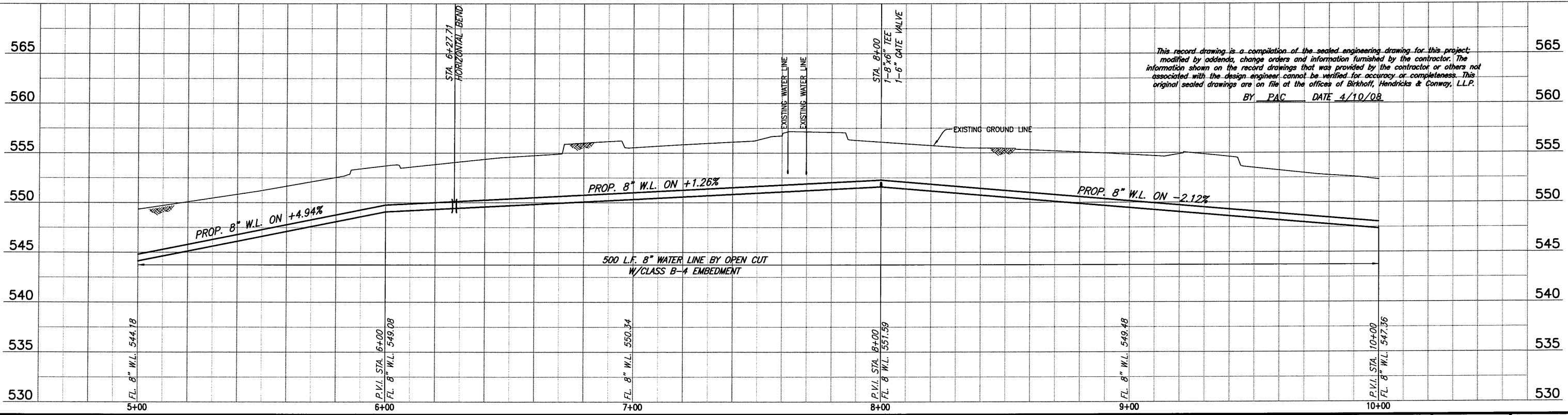
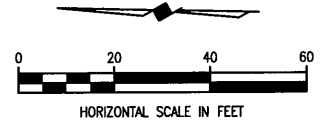
MATCH LINE STA. 10+00
N 7007608.6335 E 2601934.3479

CAUTION!!
RCH WSC WATER LINES IN AREA.
CONTRACTOR TO CONFIRM LOCATIONS
PRIOR TO CONSTRUCTION.
CONTACT MR. DWIGHT LINDOP WITH
RCH WSC AT 972-670-9091 PRIOR
TO CONSTRUCTION.

W.L. P.I. STA. 6+27.71
Δ=00°04'12" LT.
N 7007980.8246
E 2601925.8610

FURNISH & INSTALL
1-6" PLUG

Traverse # 984
N: 7007876.0826
E: 2601902.1942
E: 556.785



This record drawing is a compilation of the sealed engineering drawing for this project, modified by addenda, change orders and information furnished by the contractor. The information shown on the record drawings that was provided by the contractor or others not associated with the design engineer cannot be verified for accuracy or completeness. This original sealed drawings are on file at the offices of Birkhoff, Hendricks & Conway, L.L.P.
BY PAC DATE 4/10/08

3	FIELD CHANGE No. 3	1/3/08	REVISED PLUG LOCATION
---	--------------------	--------	-----------------------

BIRKHOFF, HENDRICKS & CONWAY, L.L.P.
CONSULTING ENGINEERS
7502 Greenville Ave., Suite 220
Dallas, Texas
(214) 361-7900



THESE DOCUMENTS ARE FOR
BIDDING, CONSTRUCTION,
AND PERMIT PURPOSES.
DATE: 1/3/08

CITY OF ROCKWALL, TEXAS
WALLACE LANE WATER LINE
8" WATER LINE (LINE C)
PLAN-PROFILE
STA. 5+00 TO STA. 10+00

BHC PROJECT NO. 2006-150	SHEET NO. 26
January, 2008	

These plans and related specifications were prepared for construction of this specific project only. Reuse of these documents is not permitted without written authorization of Birkhoff, Hendricks, & Conway, L.L.P.