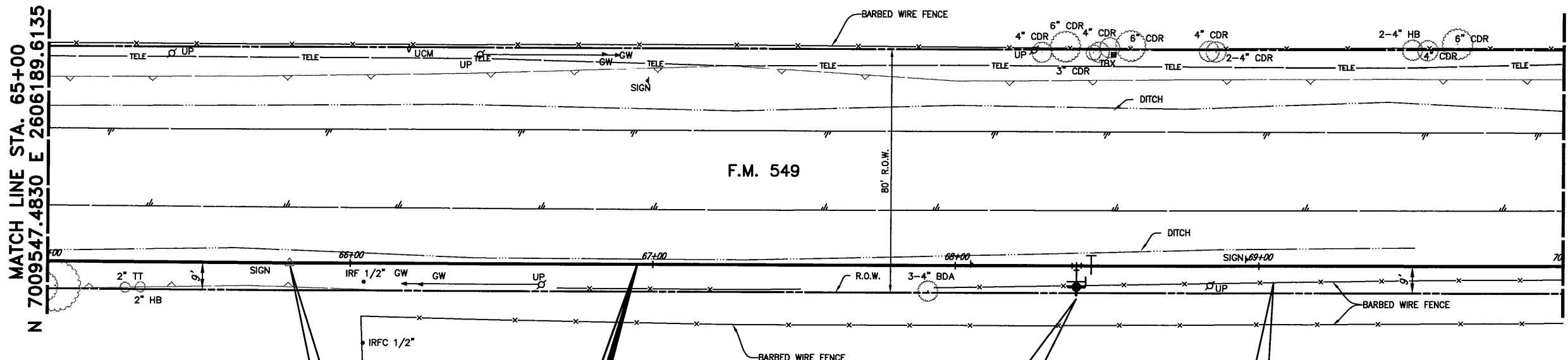


TREE REMOVAL = 
(NO PAY ITEM)

MATCH LINE STA. 65+00
N 7009547.4830 E 2606189.6135

MATCH LINE STA. 70+00
N 7009536.5266 E 2605689.2116



W.L. P.I. STA. 65+80.04
Δ = 00°17'46" LT.
N 7009545.8712
E 2606109.0662

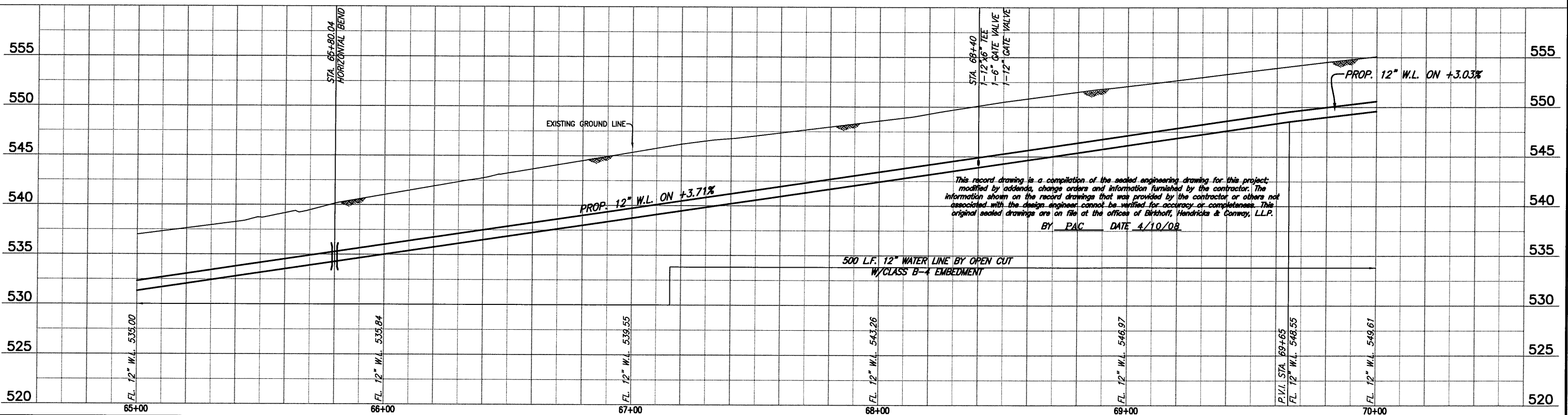
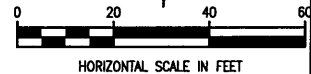
**FURNISH & INSTALL
12" WATER LINE**

CAUTION!!
BLACKLAND WSC WATER LINES IN
AREA. CONTACT BLACKLAND WSC FOR
LOCATES PRIOR TO CONSTRUCTION.

W.L. STA. 68+40
FURNISH & INSTALL
1-FIRE HYDRANT
1-12"x6" TEE
1-6" GATE VALVE
1-12" GATE VALVE
7 L.F. 6" PVC WATER LINE

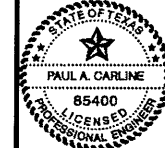
REMOVE 215 L.F. BARB
WIRE FENCE

CAUTION!!
RCH WSC WATER LINES IN AREA.
CONTRACTOR TO CONFIRM LOCATIONS
PRIOR TO CONSTRUCTION.
CONTACT MR. DWIGHT LINDOP WITH
RCH WSC AT 972-670-9091 PRIOR
TO CONSTRUCTION.



This record drawing is a compilation of the sealed engineering drawing for this project, modified by addenda, change orders and information furnished by the contractor. The information shown on the record drawings that was provided by the contractor or others not associated with the design engineer cannot be verified for accuracy or completeness. This original sealed drawings are on file at the offices of Birkhoff, Hendricks & Conway, L.L.P.
BY PAC DATE 4/10/08

BIRKHOFF, HENDRICKS & CONWAY, L.L.P.
CONSULTING ENGINEERS
7502 Greenville Ave., Suite 220
Dallas, Texas
(214) 361-7900



THESE DOCUMENTS ARE FOR
BIDDING, CONSTRUCTION,
AND PERMIT PURPOSES.
DATE: 6/12/07

CITY OF ROCKWALL, TEXAS
F. M. 549 WATER LINE
12" WATER LINE (LINE A)
PLAN-PROFILE
STA. 65+00 TO STA. 70+00

BHC
PROJECT NO.
2006-150
June, 2007

SHEET NO.
15

These plans and related specifications were prepared for construction of this specific project only. Reuse of these documents is not permitted without written authorization of Birkhoff, Hendricks & Conway, L.L.P.