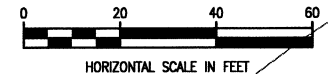
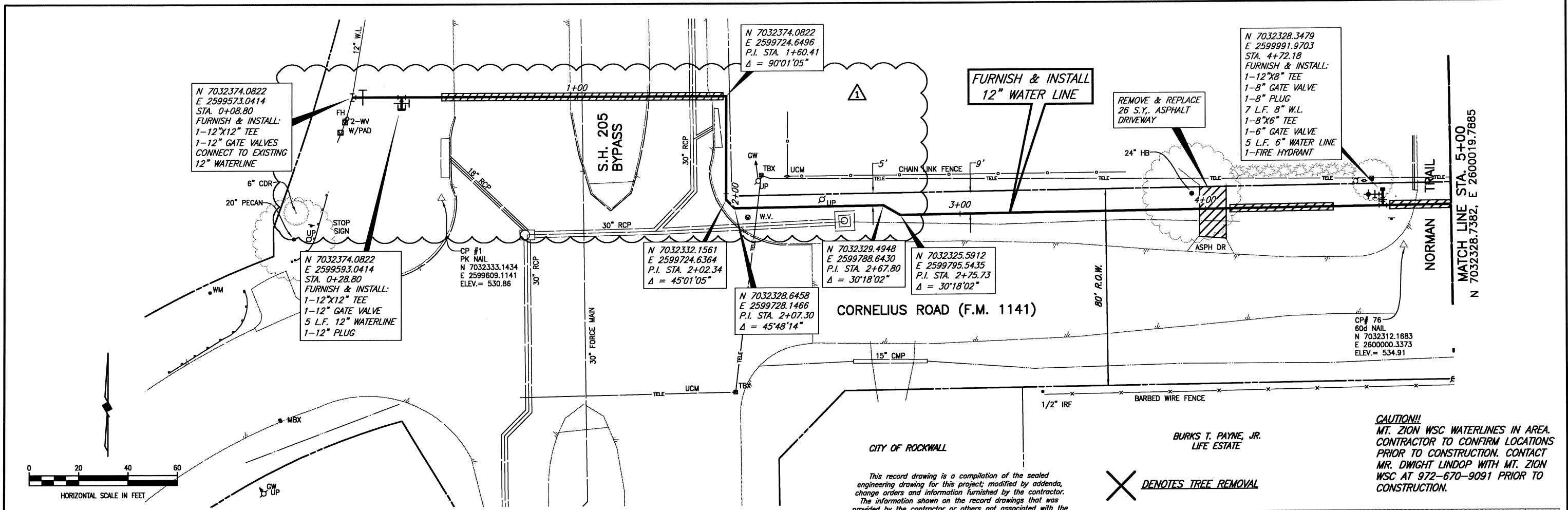


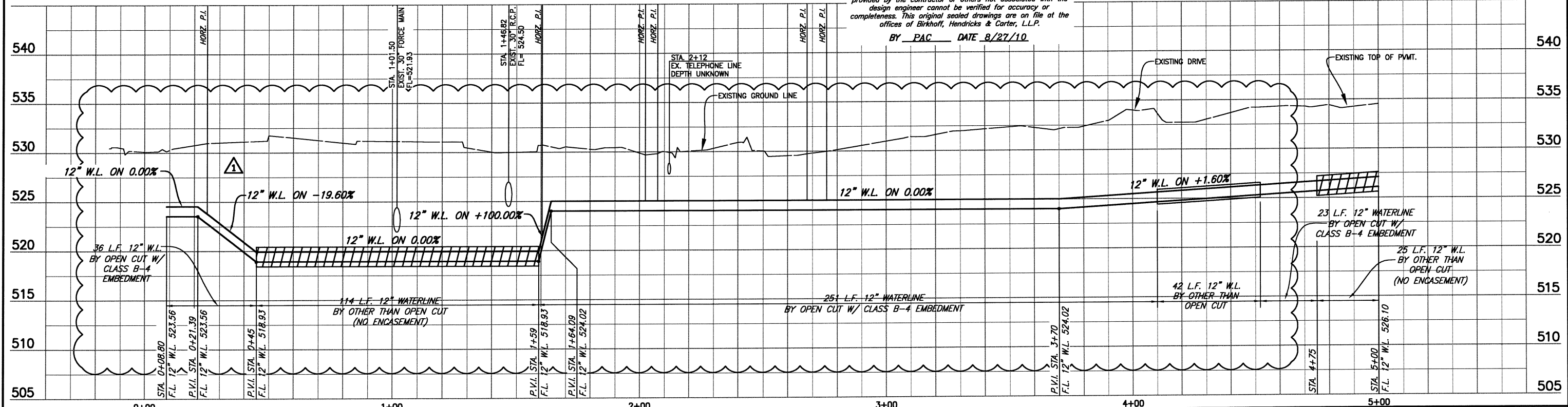
These plans and related specifications were prepared for construction of this specific project only. Reuse of these documents is not permitted without written authorization of Birkhoff, Hendricks & Conway, L.L.P.



This record drawing is a compilation of the sealed engineering drawing for this project; modified by addenda, change orders and information furnished by the contractor. The information shown on the record drawings that was provided by the contractor or others not associated with the design engineer cannot be verified for accuracy or completeness. This original sealed drawings are on file at the offices of Birkhoff, Hendricks & Conway, L.L.P.

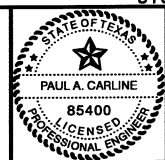
**X DENOTES TREE REMOVAL**

**CAUTION!!**  
MT. ZION WSC WATERLINES IN AREA. CONTRACTOR TO CONFIRM LOCATIONS PRIOR TO CONSTRUCTION. CONTACT MR. DWIGHT LINDOP WITH MT. ZION WSC AT 972-670-9091 PRIOR TO CONSTRUCTION.



FIELD CHANGE NO. 1 6/10/09 - REVISED WATERLINE ALIGNMENT

**BIRKHOFF, HENDRICKS & CONWAY, L.L.P.**  
CONSULTING ENGINEERS  
11910 Greenville Ave., Suite 600  
Dallas, Texas  
(214) 361-7900



*Wayne Hays*  
8/22/09

**CITY OF ROCKWALL**  
CORNELIUS (F.M. 1141) 12" WATER LINE  
LINE "C" PLAN & PROFILE SHEET  
STA. 0+00 TO 5+00

BHC PROJECT NO. 2007-131	SHEET NO. 17
June, 2009	