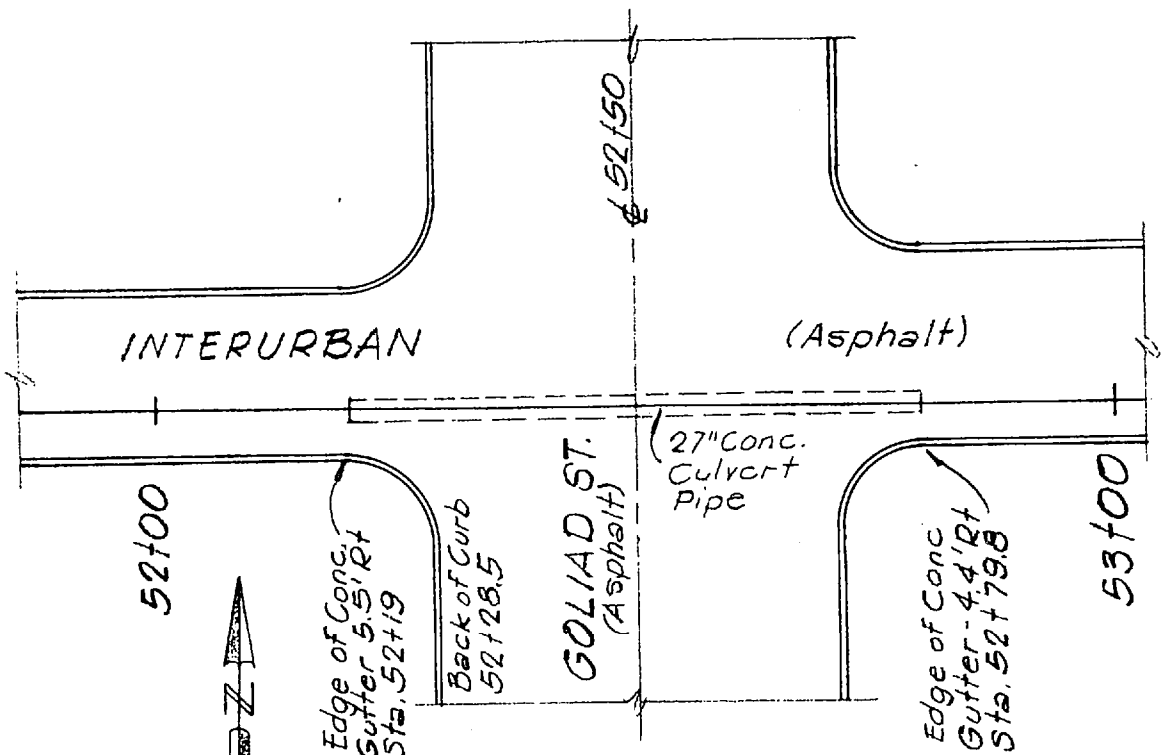
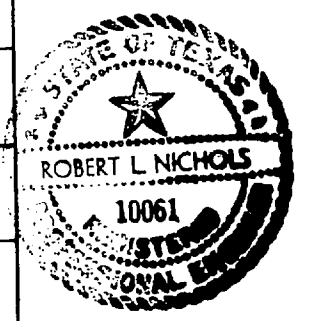
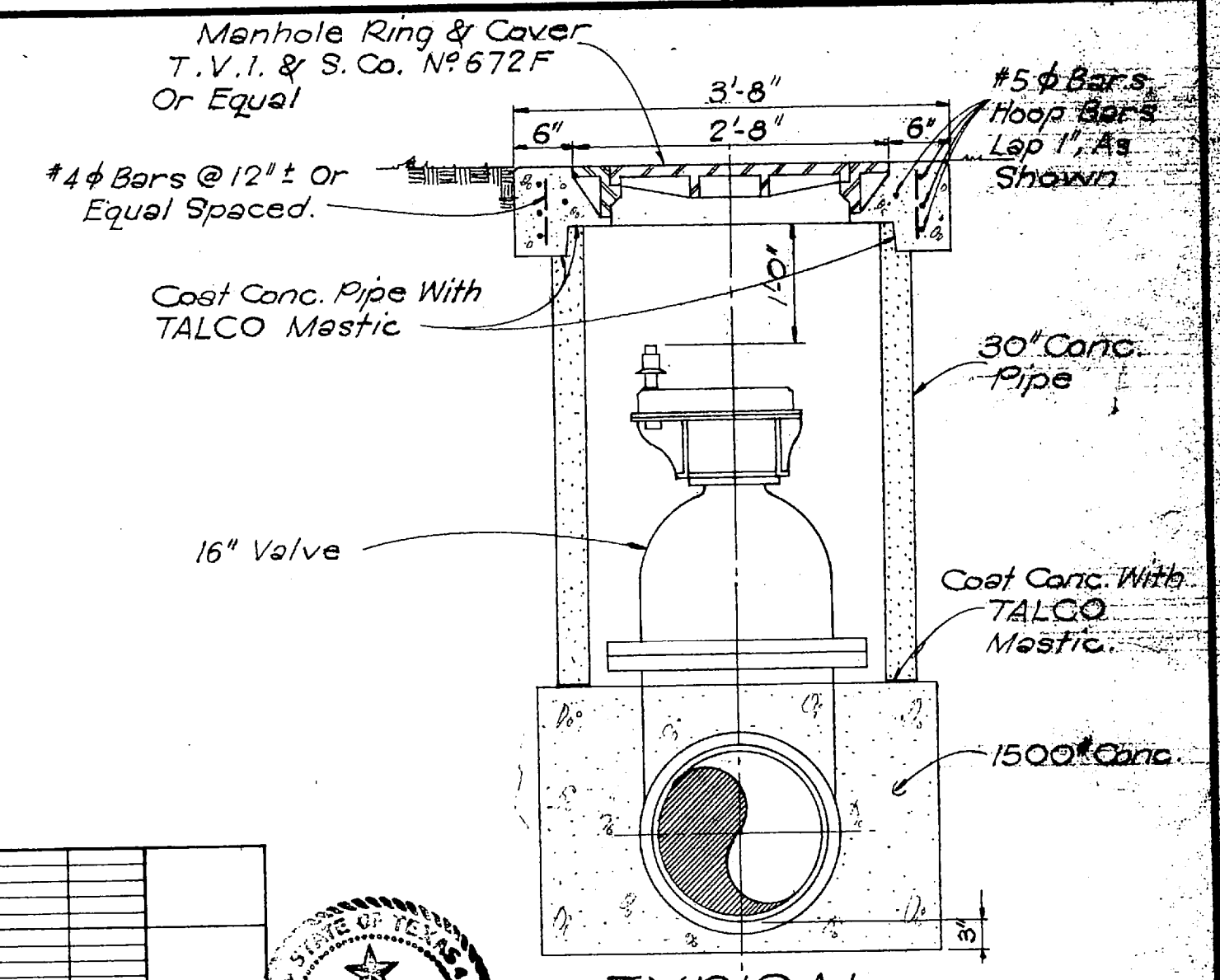
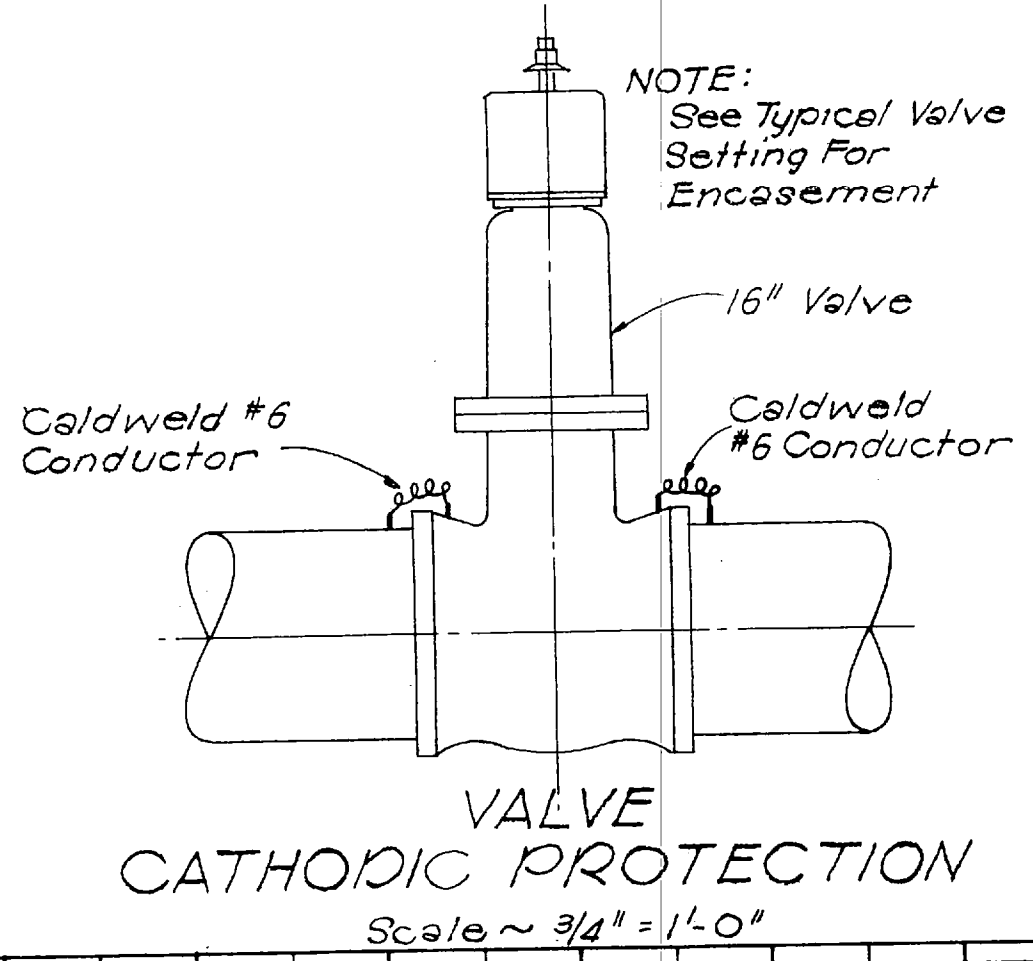
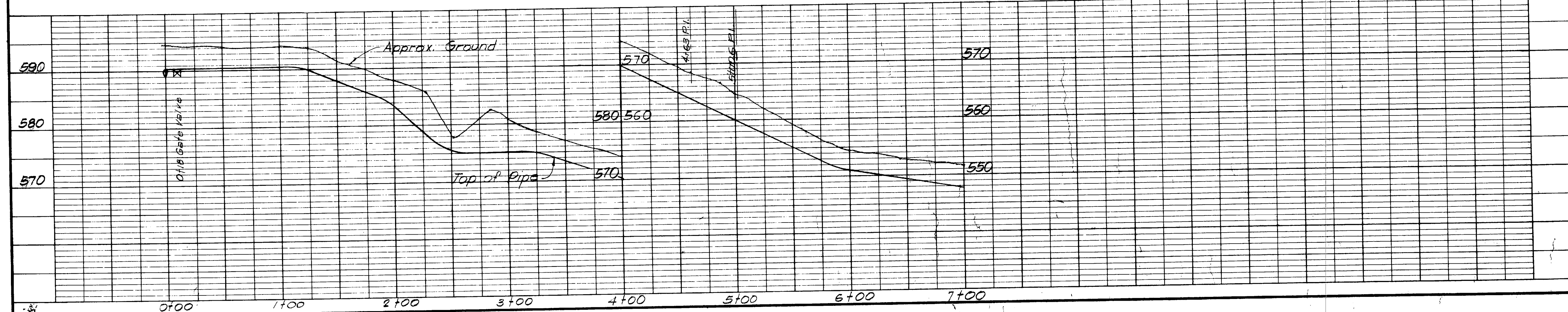
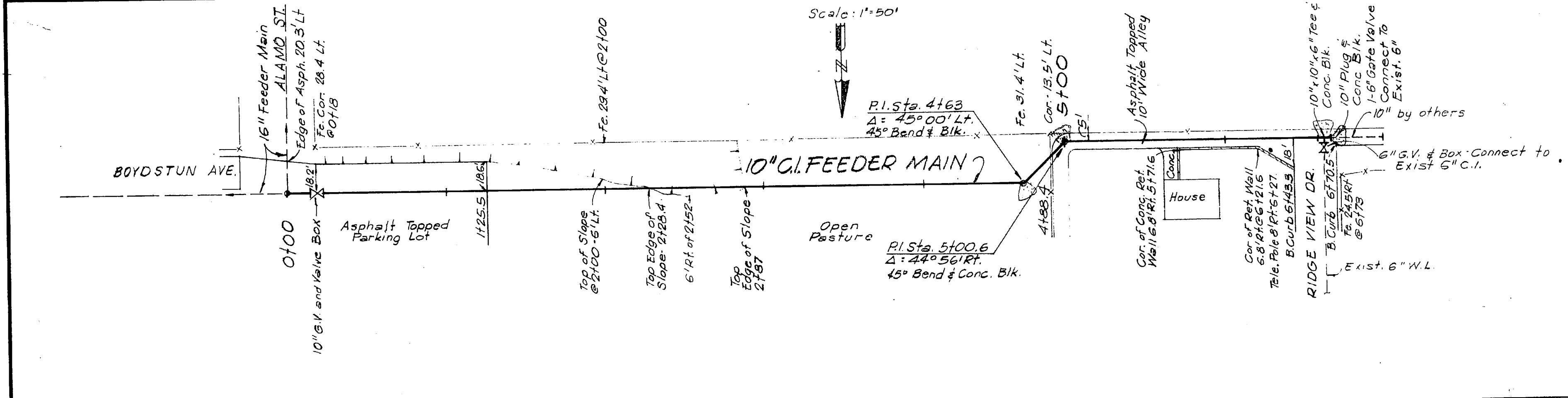
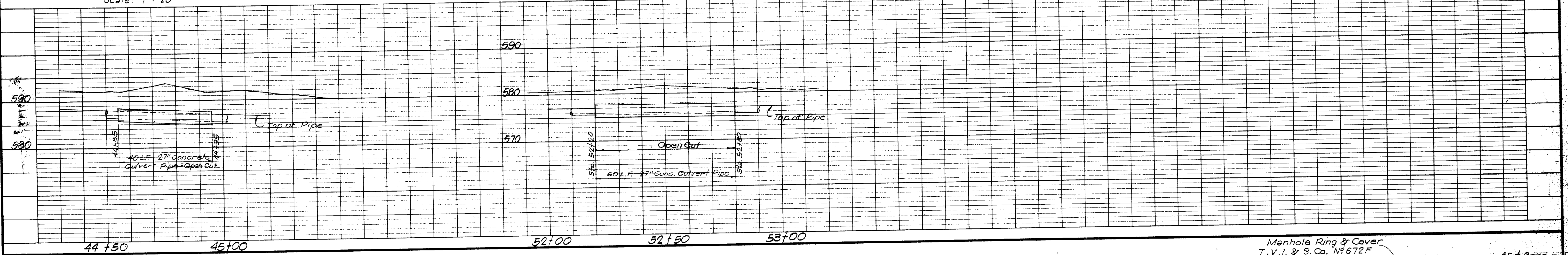


RUSK ST. CROSSING
Scale: 1" = 20'



GOLIAD ST. CROSSING
Scale: 1" = 20'



ROCKWALL, TEXAS
WATER SYSTEM IMPROVEMENTS

16" FEEDER MAIN

10" LINE & HWY. CROSSING DETAILS

DESIGNED	D.L.D.	FREESE, NICHOLS & ENDRESS CONSULTING ENGINEERS	DATE: JAN 21972 SCALE: AS SHOWN ROK 71097 SHEET 4 OF 6
DRAWN	J.W.W.		
TRACED	---		
CHECKED	R.L.N.		