

NOTE: Verify Lines in Field
Revised STA. 18+74 To STA. 23+17

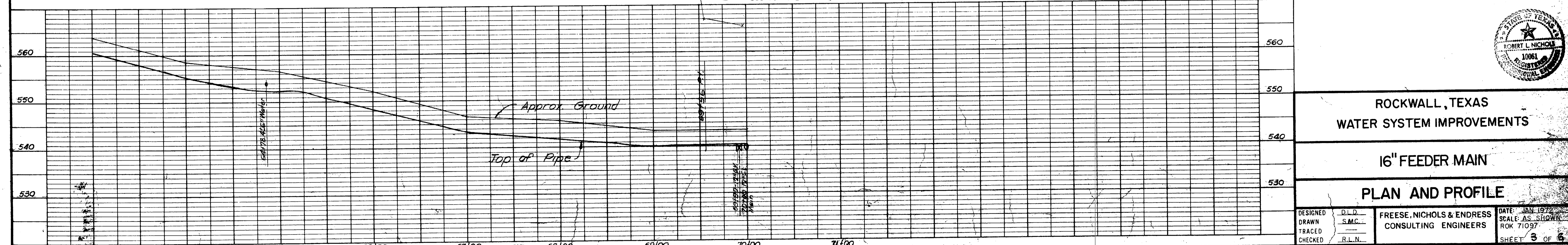
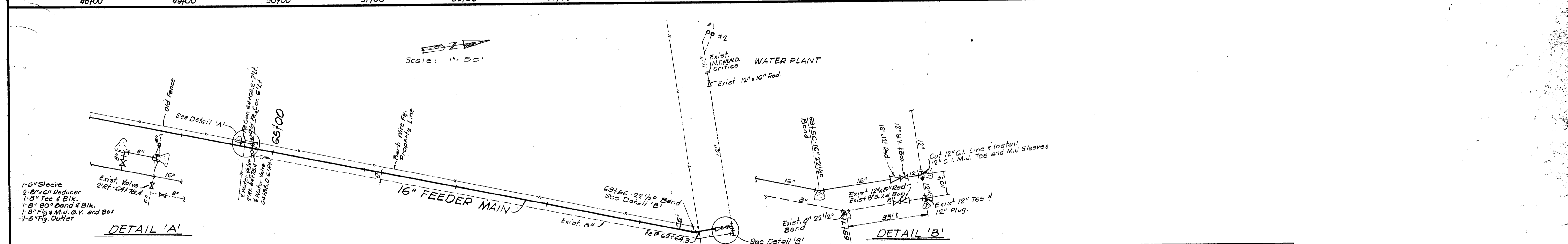
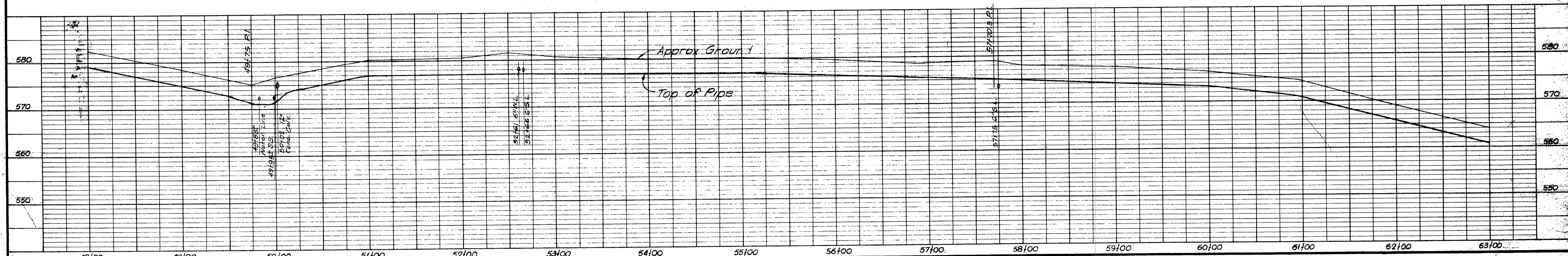
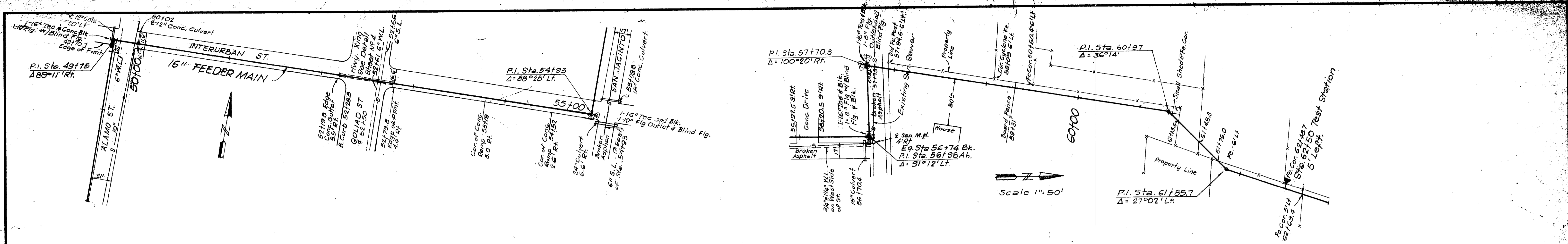


ROCKWALL, TEXAS
WATER SYSTEM IMPROVEMENTS

16" FEEDER MAIN

PLAN AND PROFILE

DESIGNED	J.L.D.	FREESE, NICHOLS & ENDRESS CONSULTING ENGINEERS	DATE: 10/1/74 SCALE: AS SHOWN
DRAWN	M.E.		
CHECKED	J.L.D.		
IN CHARGE	J.L.D.		

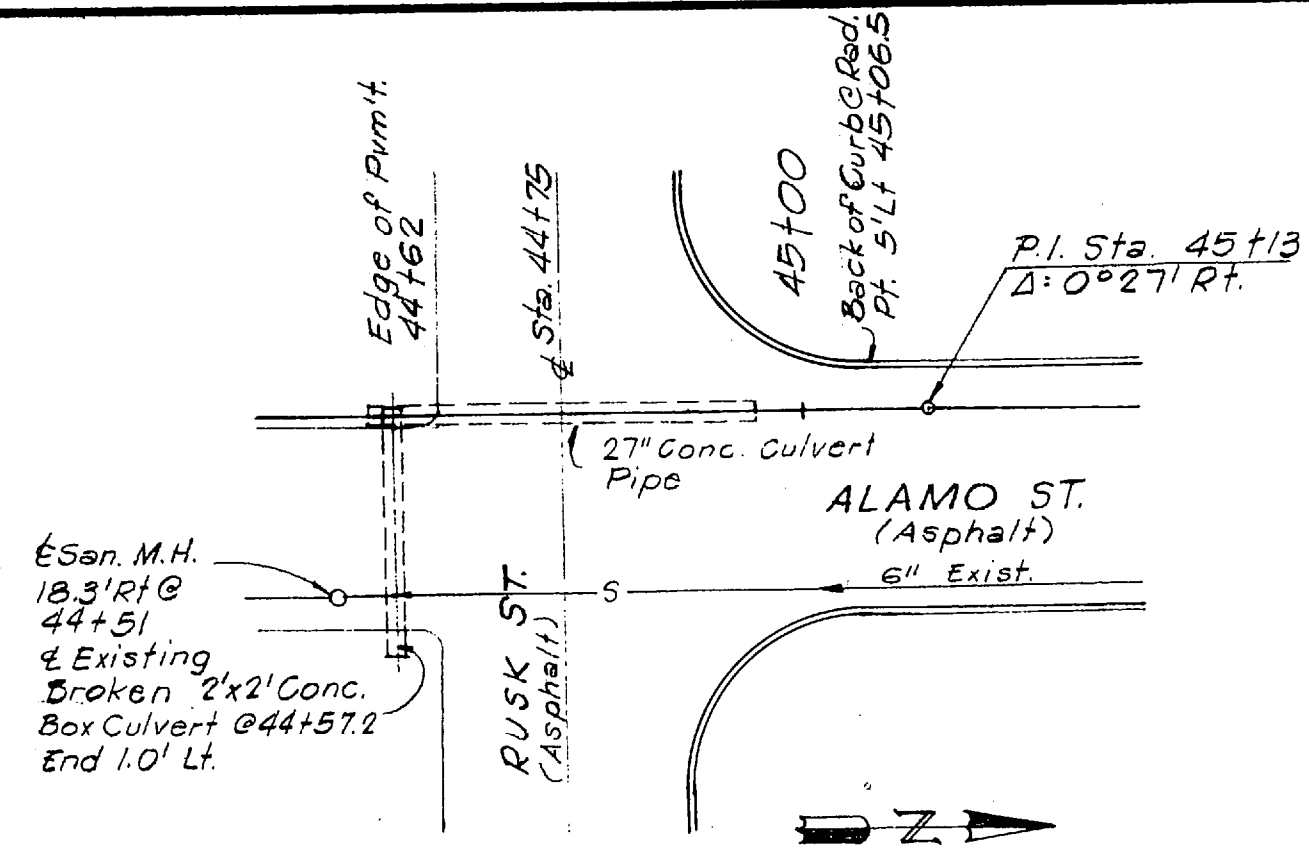


ROCKWALL, TEXAS
WATER SYSTEM IMPROVEMENTS

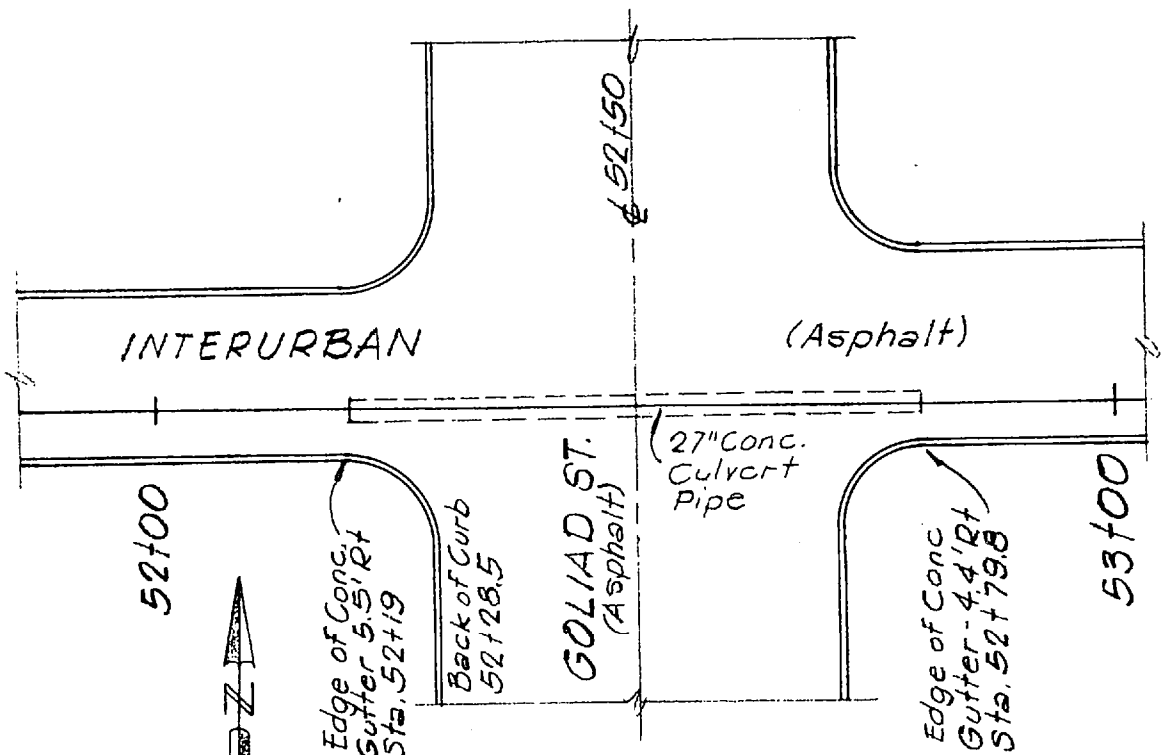
16" FEEDER MAIN

PLAN AND PROFILE

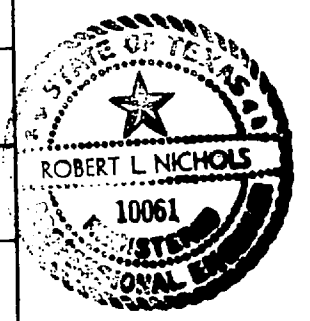
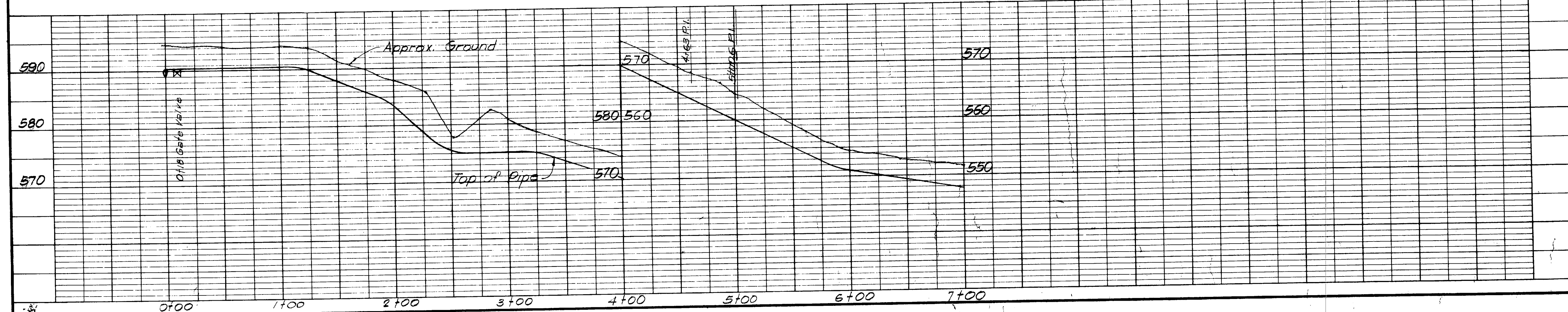
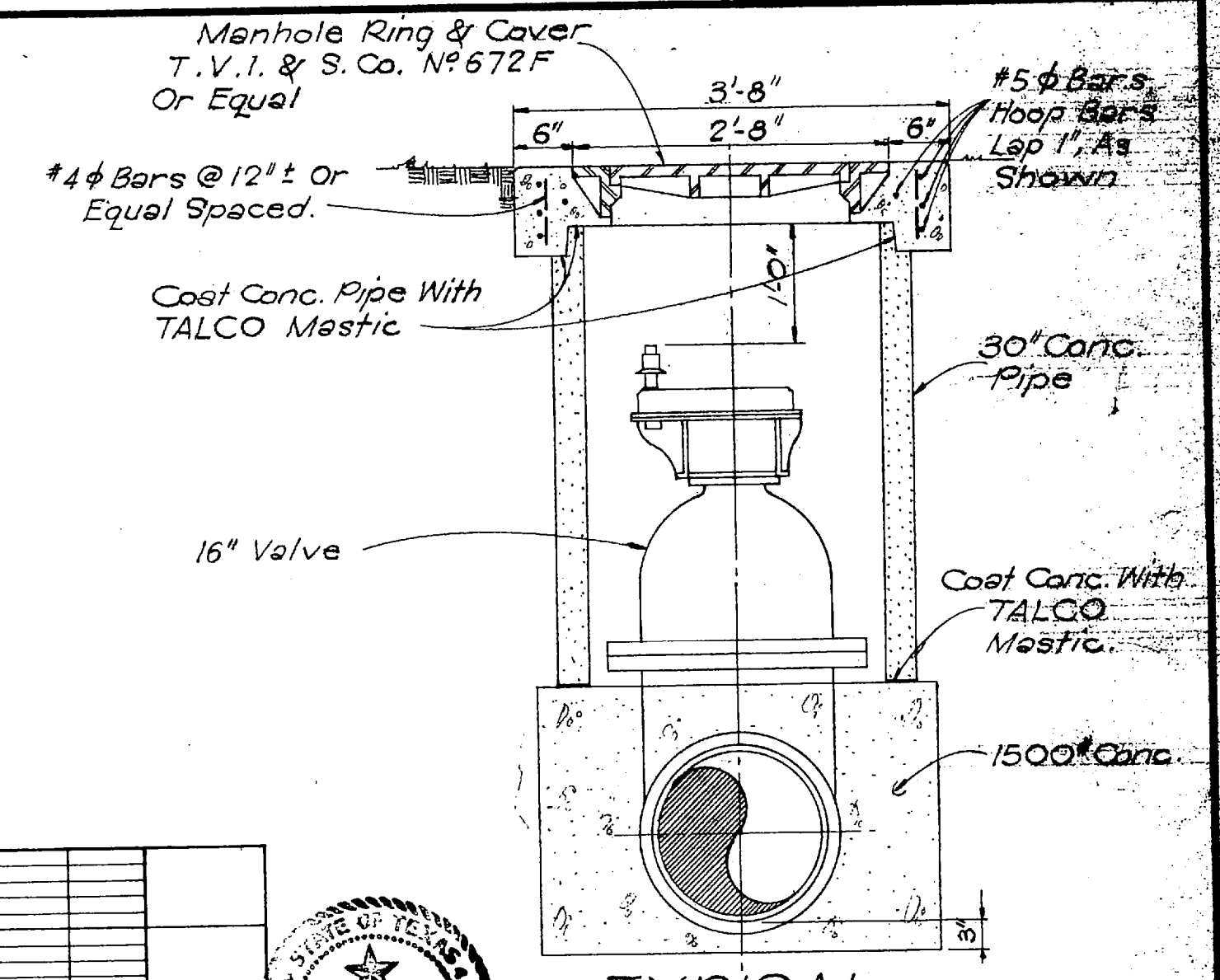
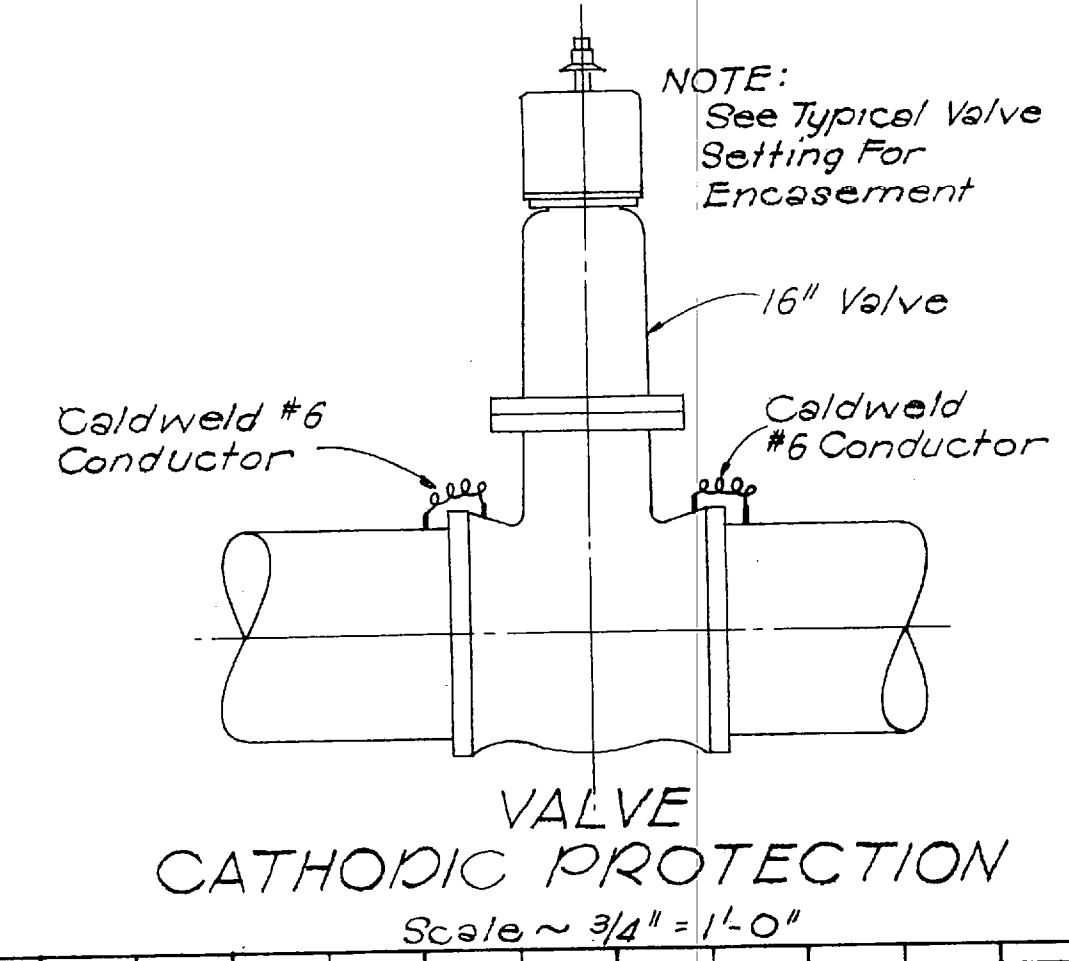
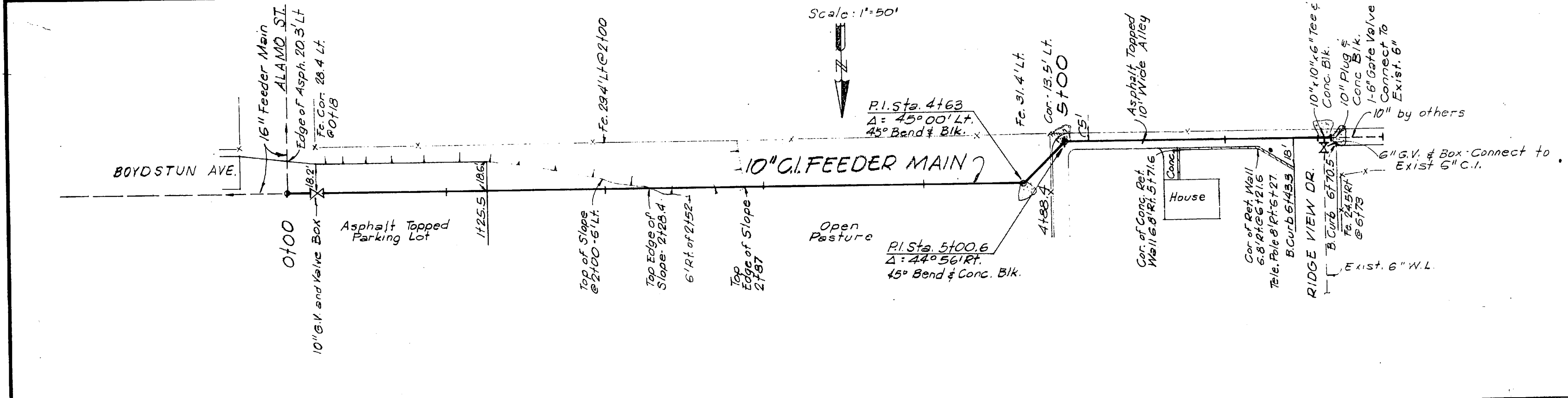
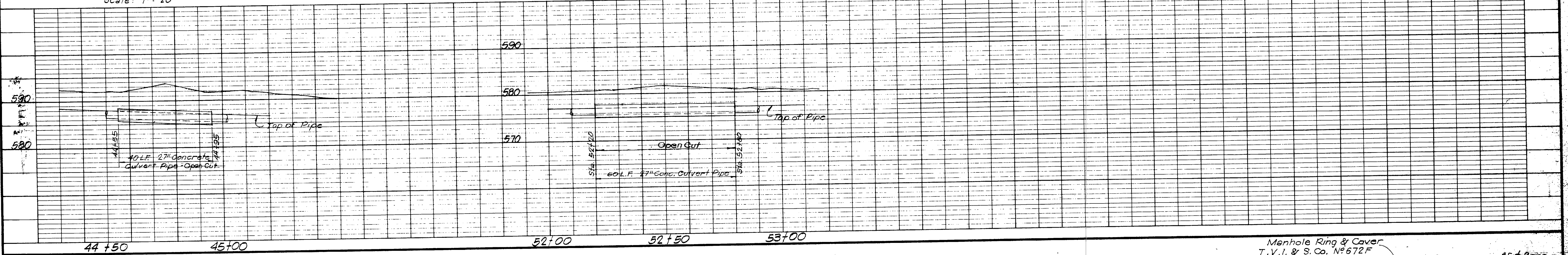
DESIGNED	D.L.D.	FREESE, NICHOLS & ENDRESS CONSULTING ENGINEERS	DATE: JAN. 1972 SCALE: AS SHOWN ROK 71097
DRAWN	S.M.C.		
TRACED	---		
CHECKED	R.L.N.		
			SHEET 3 OF 6



RUSK ST. CROSSING
Scale: 1" = 20'



GOLIAD ST. CROSSING
Scale: 1" = 20'



ROCKWALL, TEXAS
WATER SYSTEM IMPROVEMENTS

16" FEEDER MAIN

10" LINE & HWY. CROSSING DETAILS

DESIGNED	D.L.D.	FREESE, NICHOLS & ENDRESS CONSULTING ENGINEERS	DATE: JAN 21972 SCALE: AS SHOWN ROK 71097 SHEET 4 OF 6
DRAWN	J.W.W.		
TRACED	---		
CHECKED	R.L.N.		