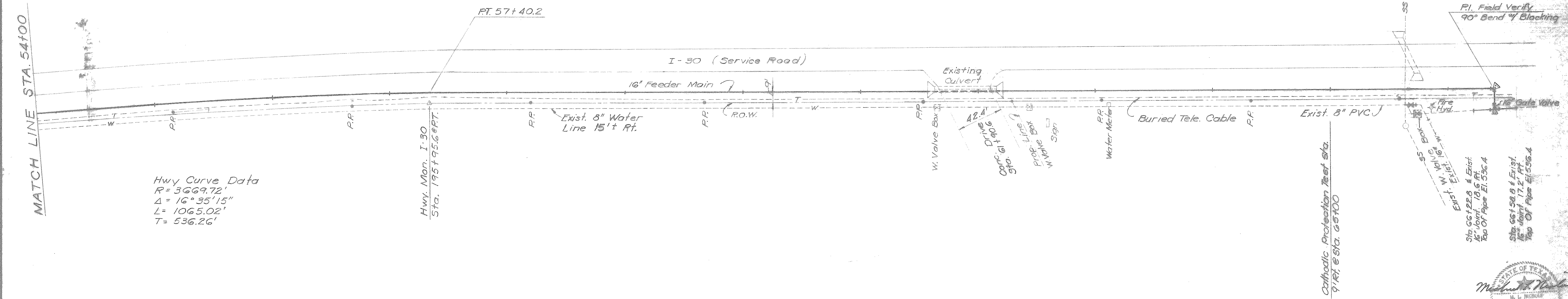


Scale: 1" = 40'



Hwy Curve Data  
 $R = 3669.72'$   
 $\Delta = 16^{\circ}35'15''$   
 $L = 1065.02'$   
 $T = 536.26'$

Hwy. Mar. I-30  
 Sta. 195+55.6@PT.

Exist. 8" Water Line 15' Rt.

Existing Culvert

Buried Tele. Cable

Cathodic Protection Test Sta.  
 9' Rt. & Sta. 65+00

Sta. 66+22.8 & Exist. 1/2" J. of Pipe El. 536.4

Sta. 66+59.8 & Exist. 1/2" J. of Pipe El. 536.4

