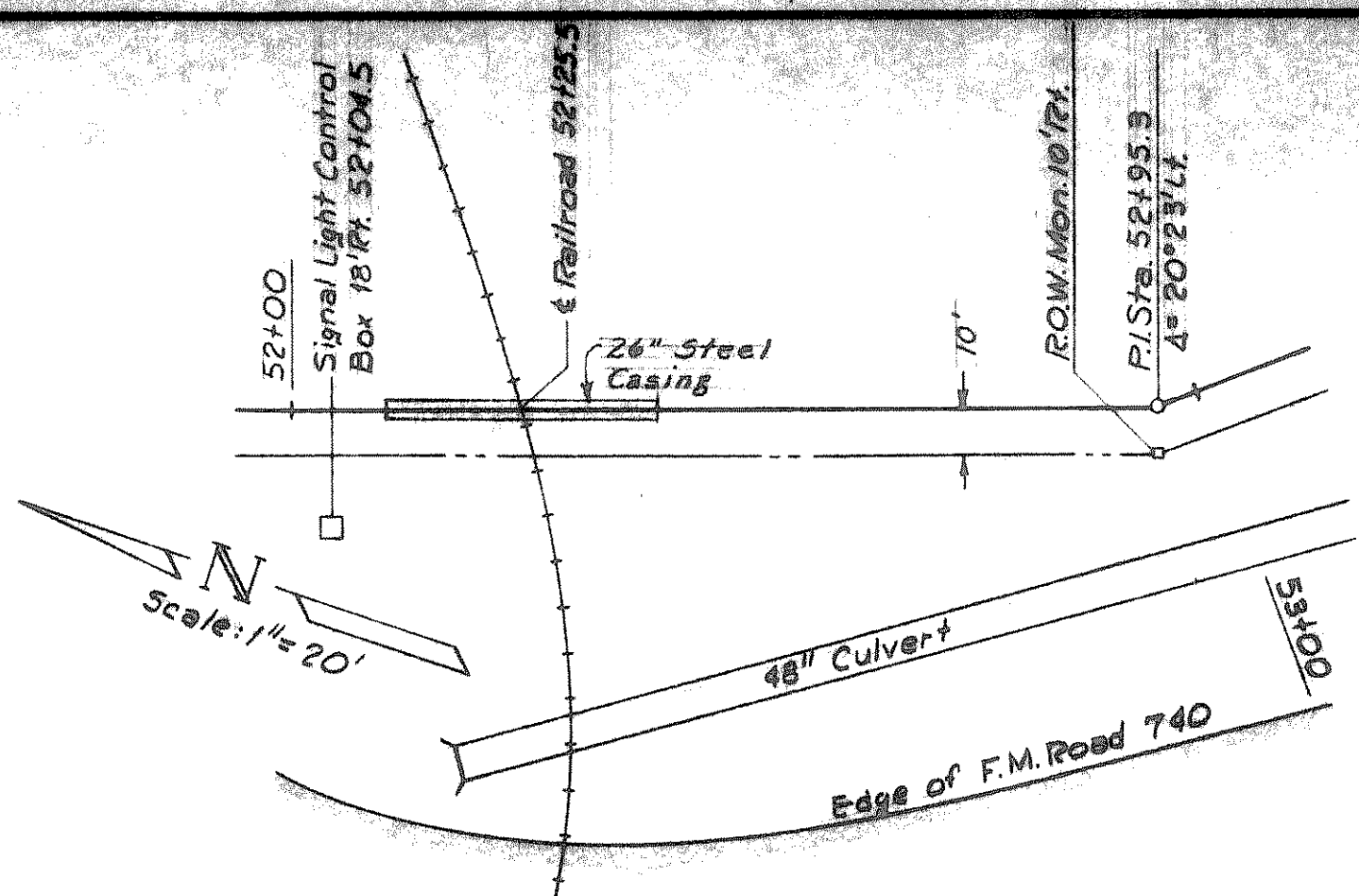
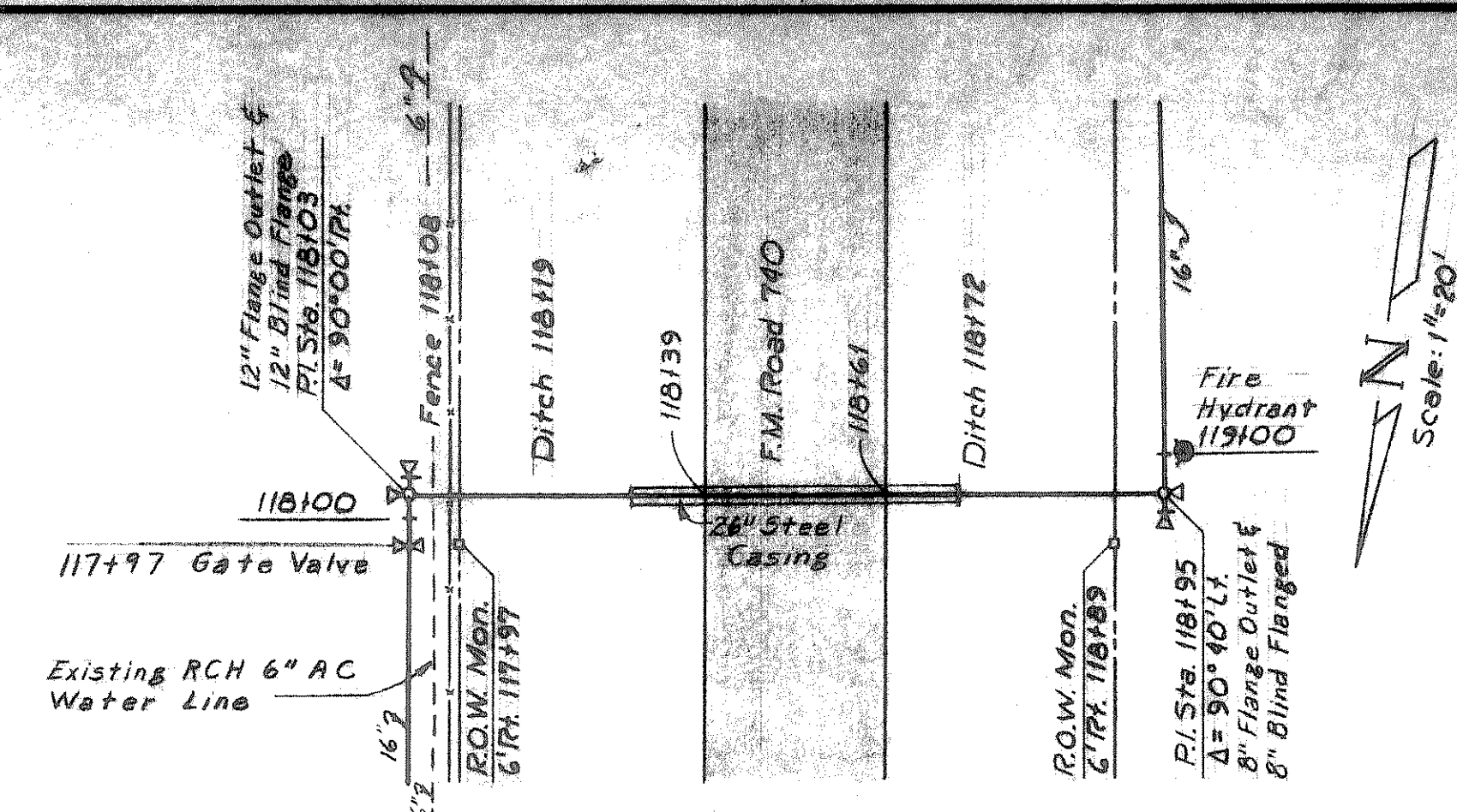


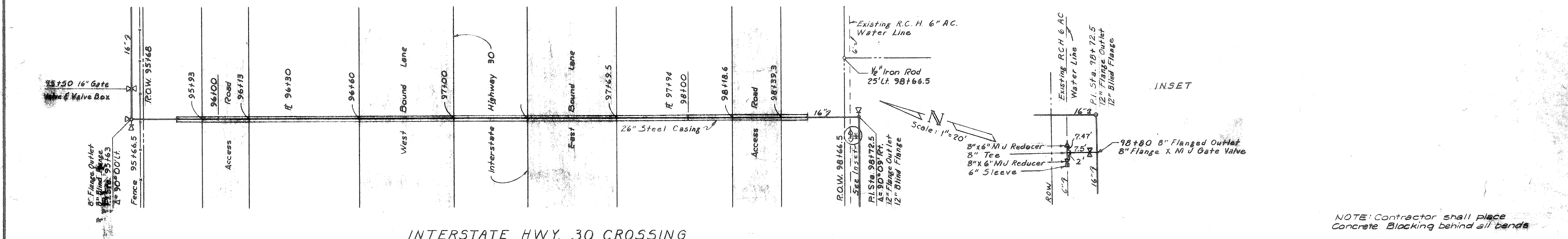
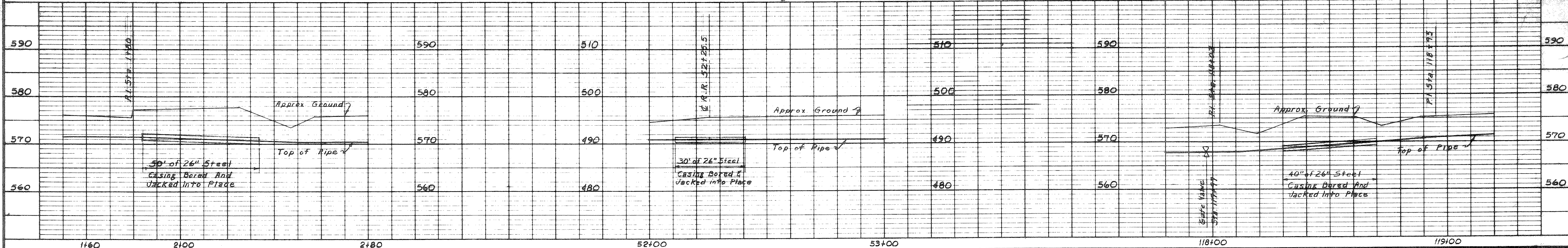
F.M. 740 Crossing South of Glenn Ave.



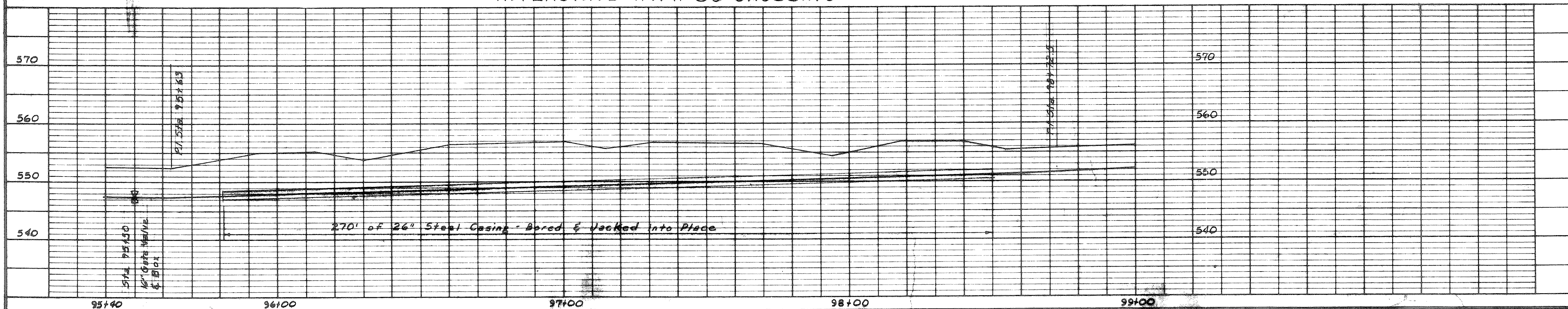
16" Railroad Crossing



F.M. 740 Crossing South of I-30

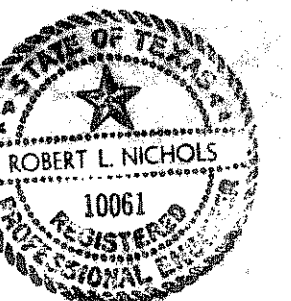


INTERSTATE HWY. 30 CROSSING



NOTE: Contractor shall place Concrete Blocking behind all bands

REVISED - AS BUILT
DATE 10-14-74 W.C.V.



ROCKWALL, TEXAS
WATER SYSTEM IMPROVEMENTS

16" FEEDER MAIN
ALONG F.M. ROAD 740

HIGHWAY & RAILROAD CROSSING DETAILS

DESIGNED	D.L.D.	FREESE, NICHOLS & ENDRESS	DATE: MAY, 1973
DRAWN	T.C.E.	CONSULTING ENGINEERS	SCALE: AS SHOWN
TRACED			ROK 73032
CHECKED	R.L.N.		SHEET 7 OF 11