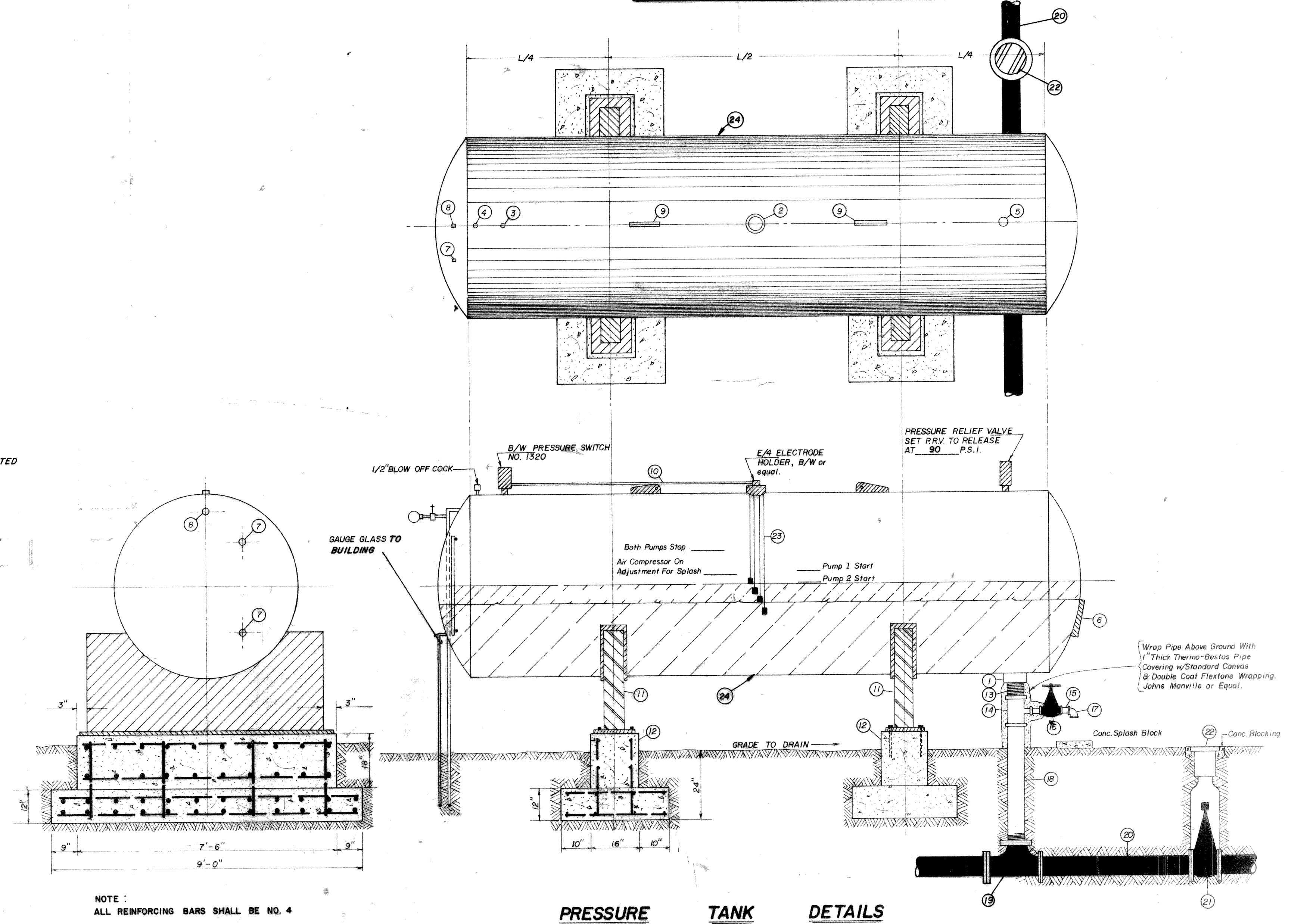
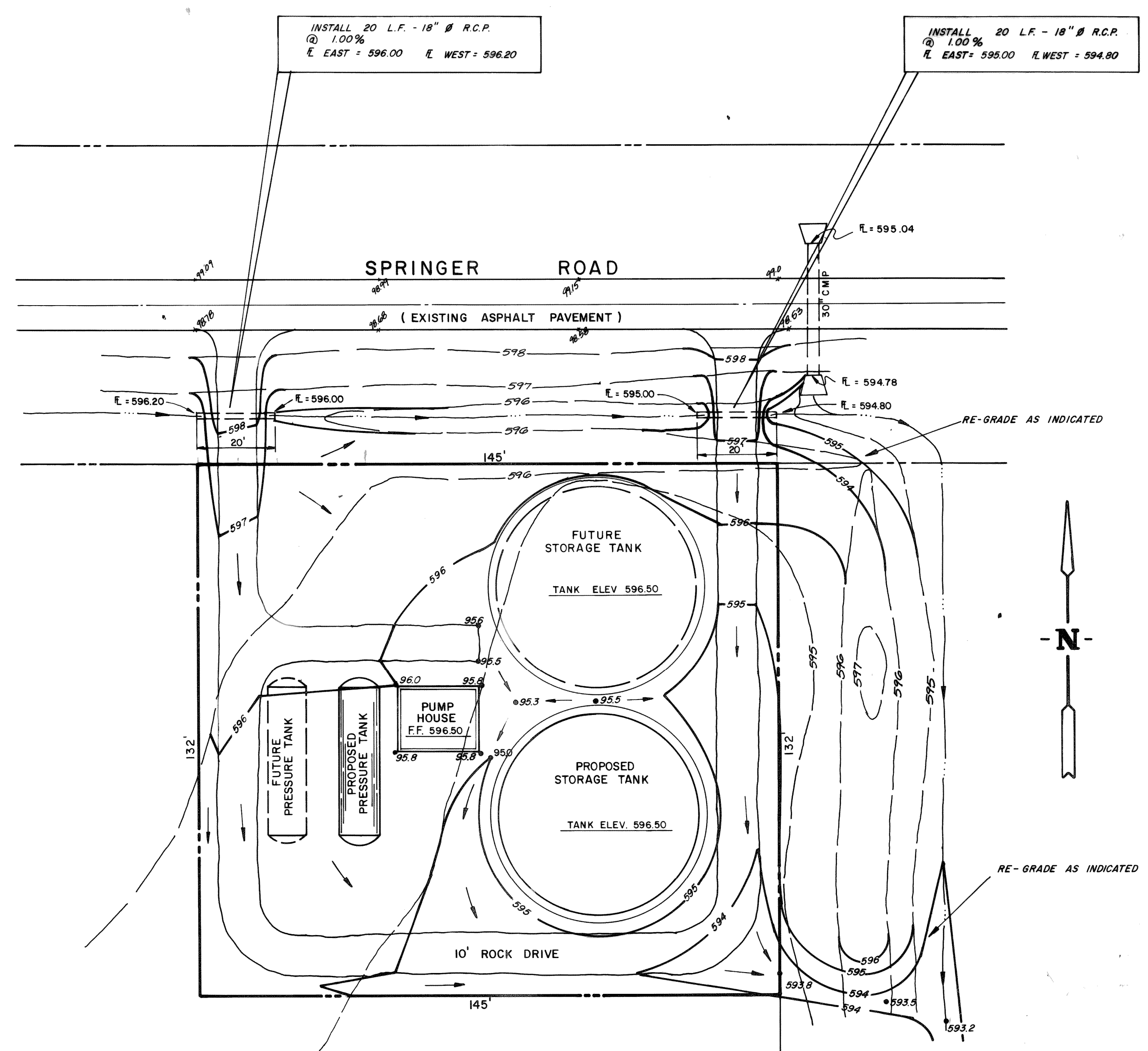
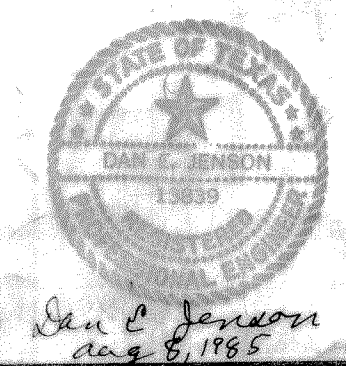


PRESSURE TANK SCHEDULE		
1	12"	COUPLING FOR C.I. PIPE FROM PUMPS, SEE PUMP HOUSE DETAILS.
2	3"	COUPLING FOR E/A ELECTRODE HOLDER.
3	1/2"	COUPLING FOR PRESSURE SWITCH.
4	1/2"	COUPLING FOR BLOW OFF COCK.
5	3/4"	COUPLING FOR PRESSURE RELIEF VALVE.
6	15"	ELLIPTICAL MANWAY.
7	1/2"	COUPLINGS FOR GAUGE GLASS.
8	1/2"	COUPLING FOR AIR COMPRESSOR DISCHARGE LINE.
9		LIFT LUGS.
10	3/4"	CONDUIT FROM ELECTRODES TO CONTROL PANEL.
11		STEEL TANK CRADLE.
12		CONCRETE TANK SUPPORT.
13	12"	GALVANIZED NIPPLE.
14	2x2x2"	STEEL TEE.
15	2"	GALVANIZED NIPPLE.
16	2"	GATE VALVE, NRS, AWWA APPROVED.
17	2"	GALVANIZED, SHORT BODY, 90° ELBOW.
18	12"	STEEL PIPE, COMPANION FLANGE ONE END & SCREWED ONE END.
19	12"	FLANGED, TEE.
20	12"	C.I. PIPE.
21	12"	GATE VALVE, NRS, AWWA APPROVED. M.J.
22		C.I. VALVE BOX w/CONC. BLOCKING.
23	4	1/4" ELECTRODES, LENGTHS SHOWN ON PLANS.
24	10' DIA. x 37' LONG	STEEL PRESSURE TANK.



NOTE:  
ALL REINFORCING BARS SHALL BE NO. 4

AS BUILT



<b>WATER DETAILS</b>		<b>ROCKWALL COUNTY, TEXAS</b>	
<b>BLACKLAND WATER SUPPLY CORP.</b>			
DESIGN D.E.B.	DRAWN H. RAY M.	SCALE NONE	DATE 8-8-85
328-8133 HAROLD L. EVANS		CONSULTING ENGINEER DALLAS	