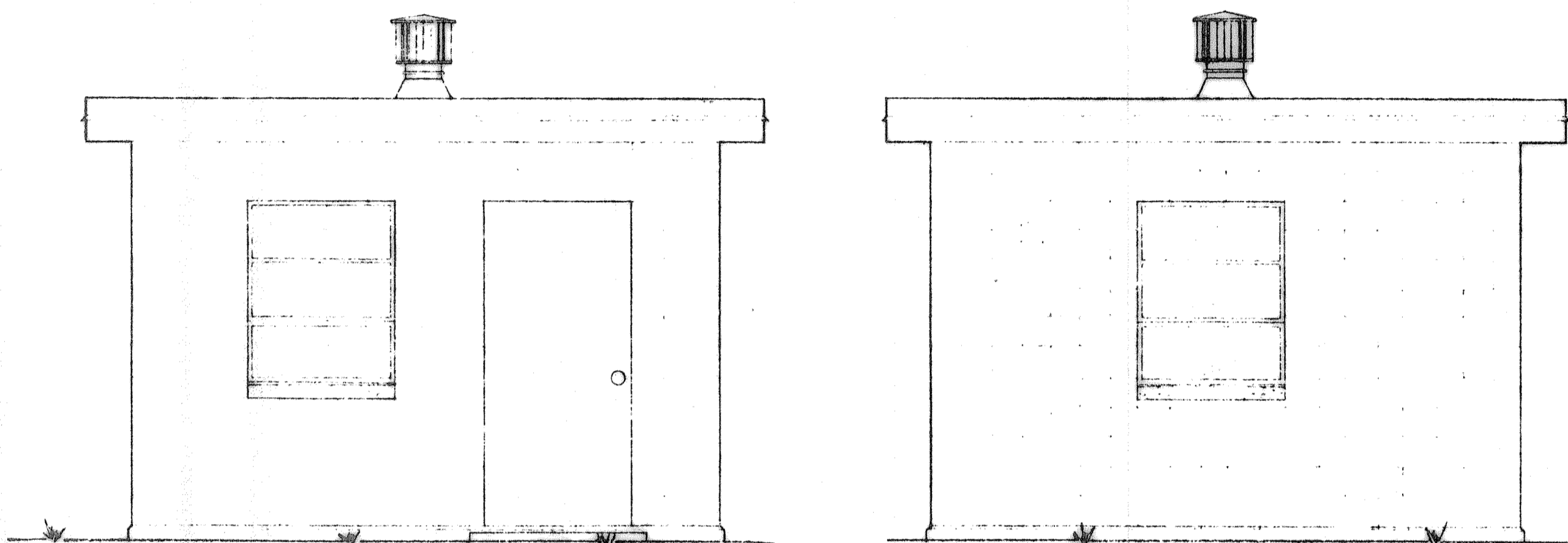


FRONT ELEVATION

BACK ELEVATION

WATER PLANT BUILDING No 1

SCALE 3/8" = 1'-0"

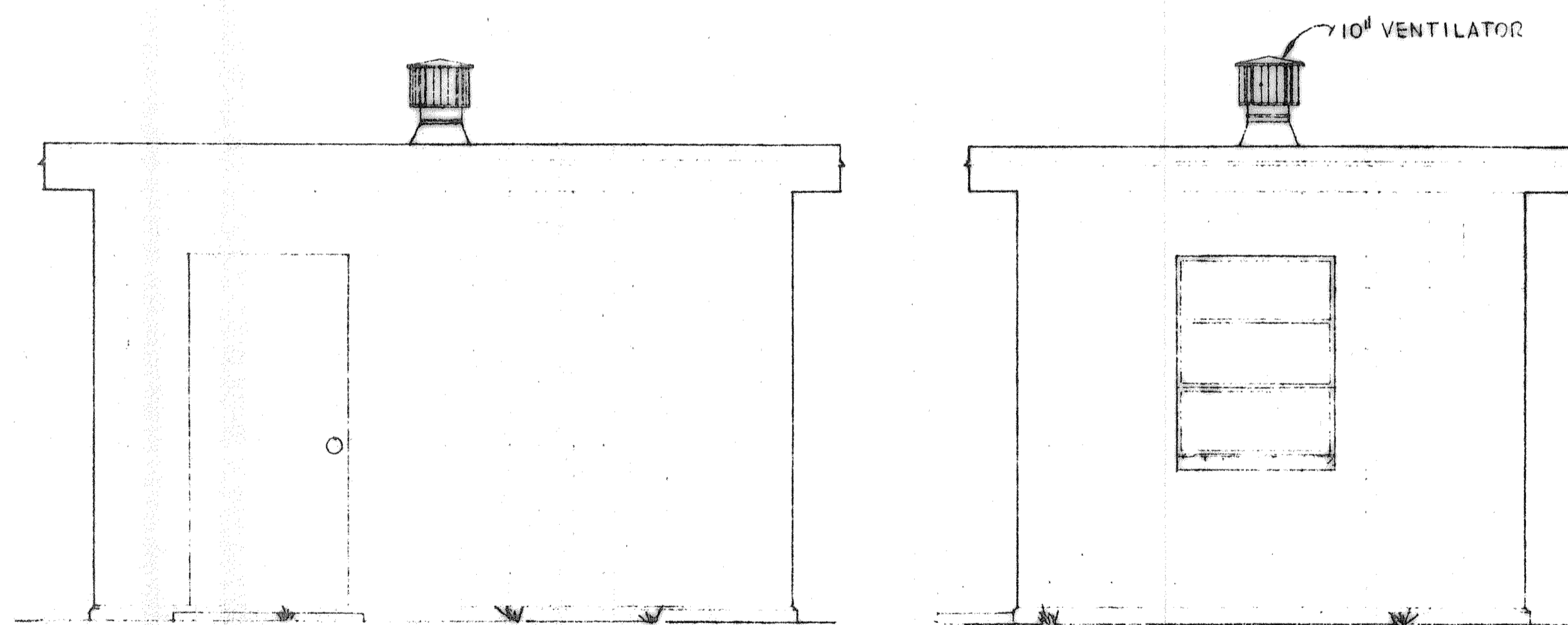


FRONT ELEVATION

BACK ELEVATION

WATER PLANT BUILDING No 3

SCALE 3/8" = 1'-0"

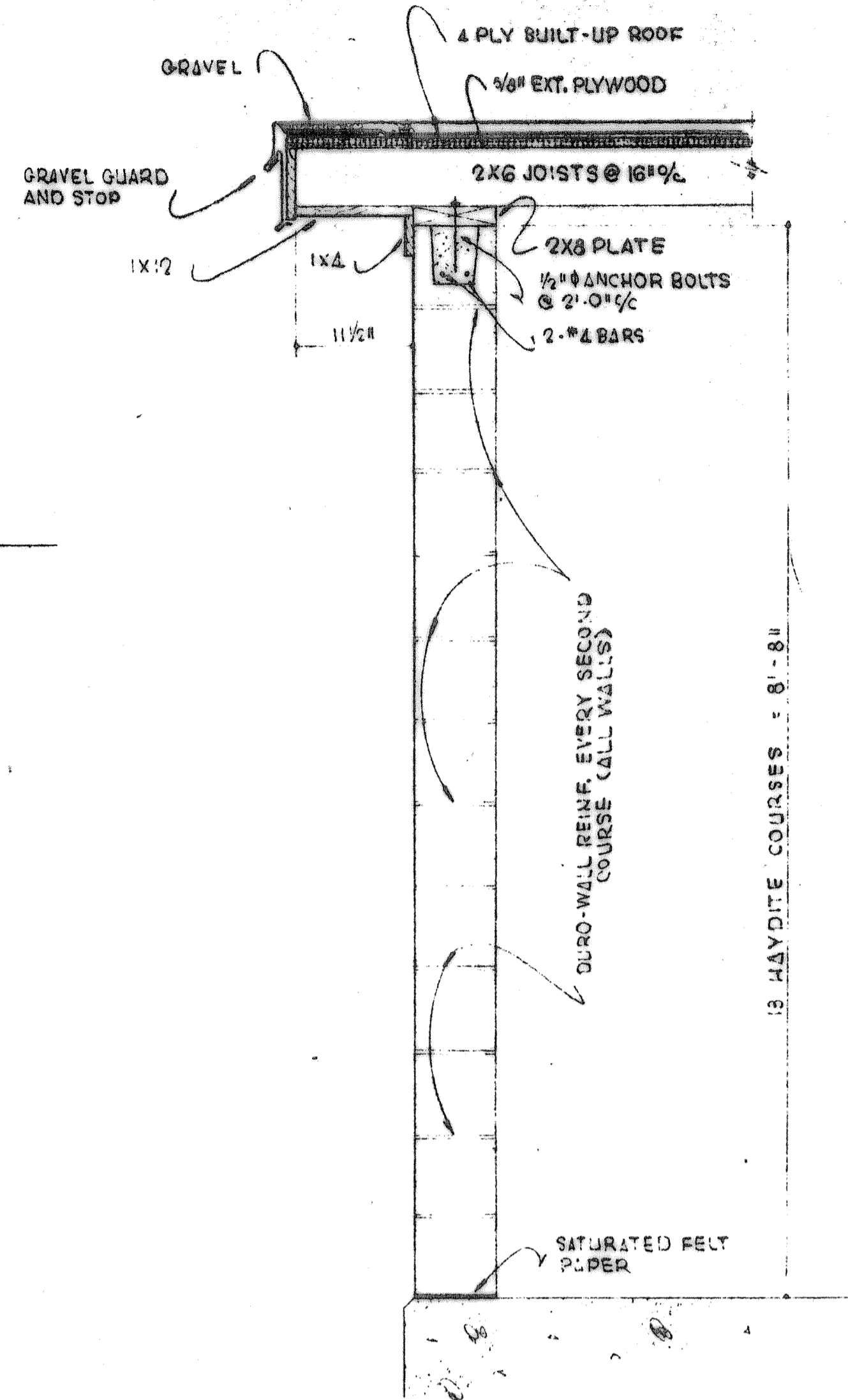


FRONT ELEVATION

SIDE ELEVATION

WATER PLANT BUILDING No 2

SCALE 3/8" = 1'-0"

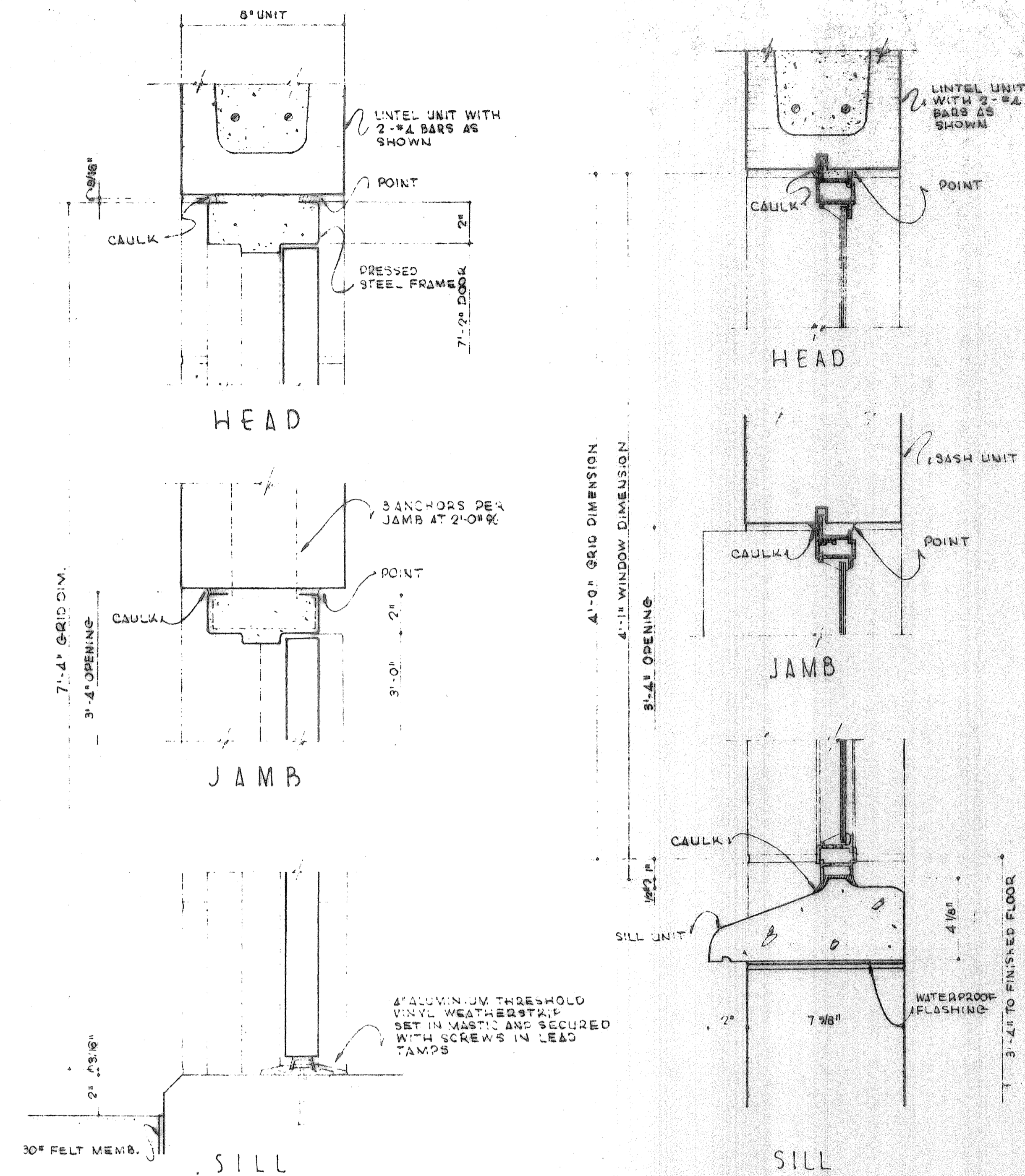


TYPICAL WALL SECTION

SCALE 3/4" = 1'-0"

NOTE: ALTERNATE BIDS ARE REQUIRED FOR GALVANIZED PRE-FABRICATED STEEL BUILDINGS, SEE PROPOSAL & DETAIL SPECIFICATION.

NOTE: ALL 10" VENTILATORS SHALL BE BREIDERT TYPE L ON TYPE FR-4 BASE WITH INSECT SCREEN AND DAMPER OR APPROVED EQUAL



DOOR DETAILS

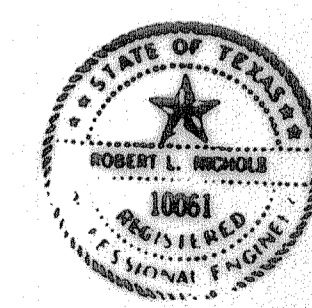
SCALE 3/4" = 1'-0"

WINDOW DETAILS

SCALE 5/8" = 1'-0"

JANUARY, 1966

BLACKLAND WATER SUPPLY CORP.
ROCKWALL COUNTY, TEXAS
WATER DISTRIBUTION SYSTEM
ARCHITECTURAL DETAILS



DESIGNED: D.L.D.	DATE: Dec. 1965
DRAWN: J.P.H.	SCALE: 1" = 100'
TRACED: J.P.H.	Sheet: 22
CHECKED: R.L.N.	of 22

FREES, NICHOLS & ENDRESS
CONSULTING ENGINEERS
FORT WORTH, TEXAS