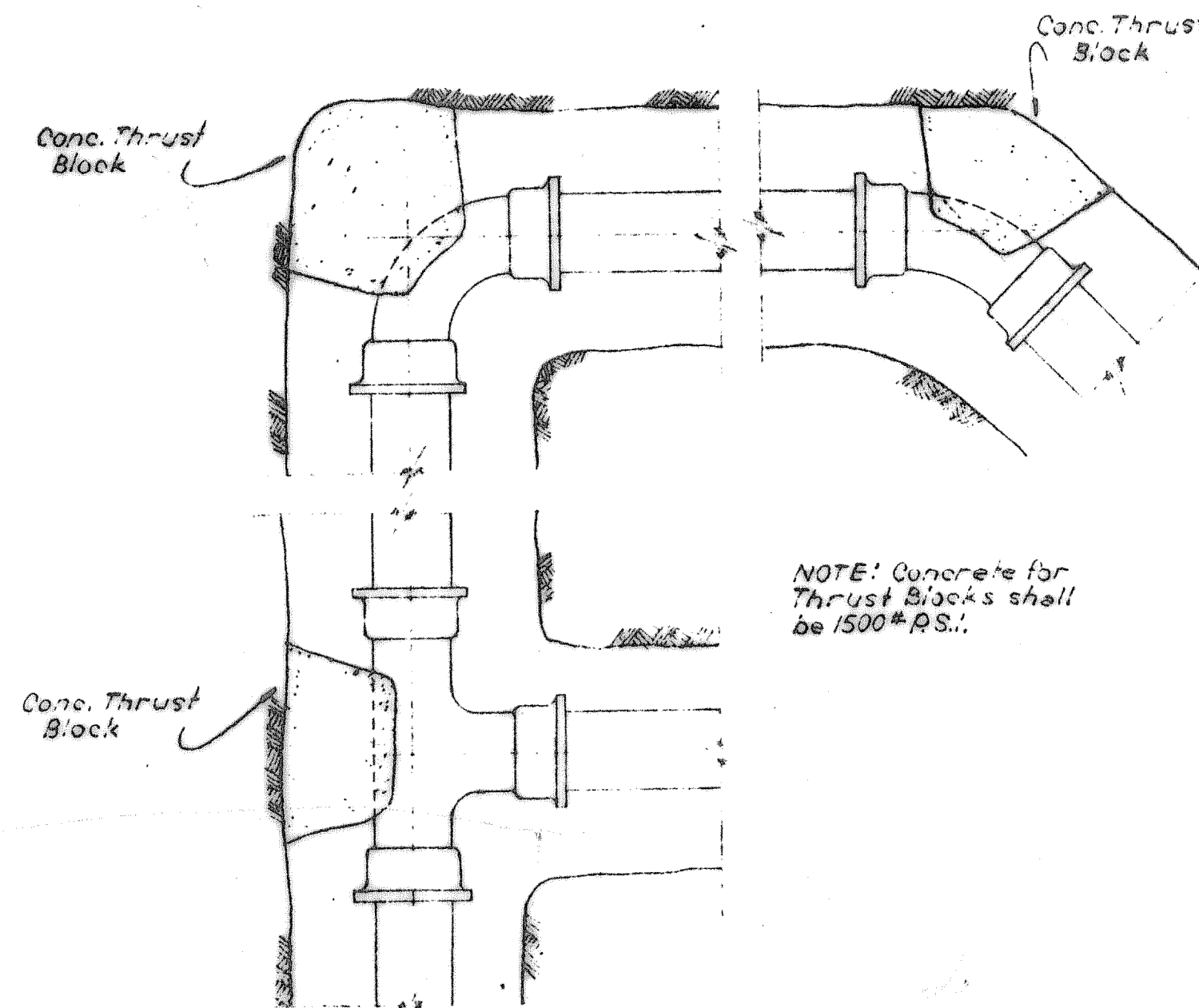
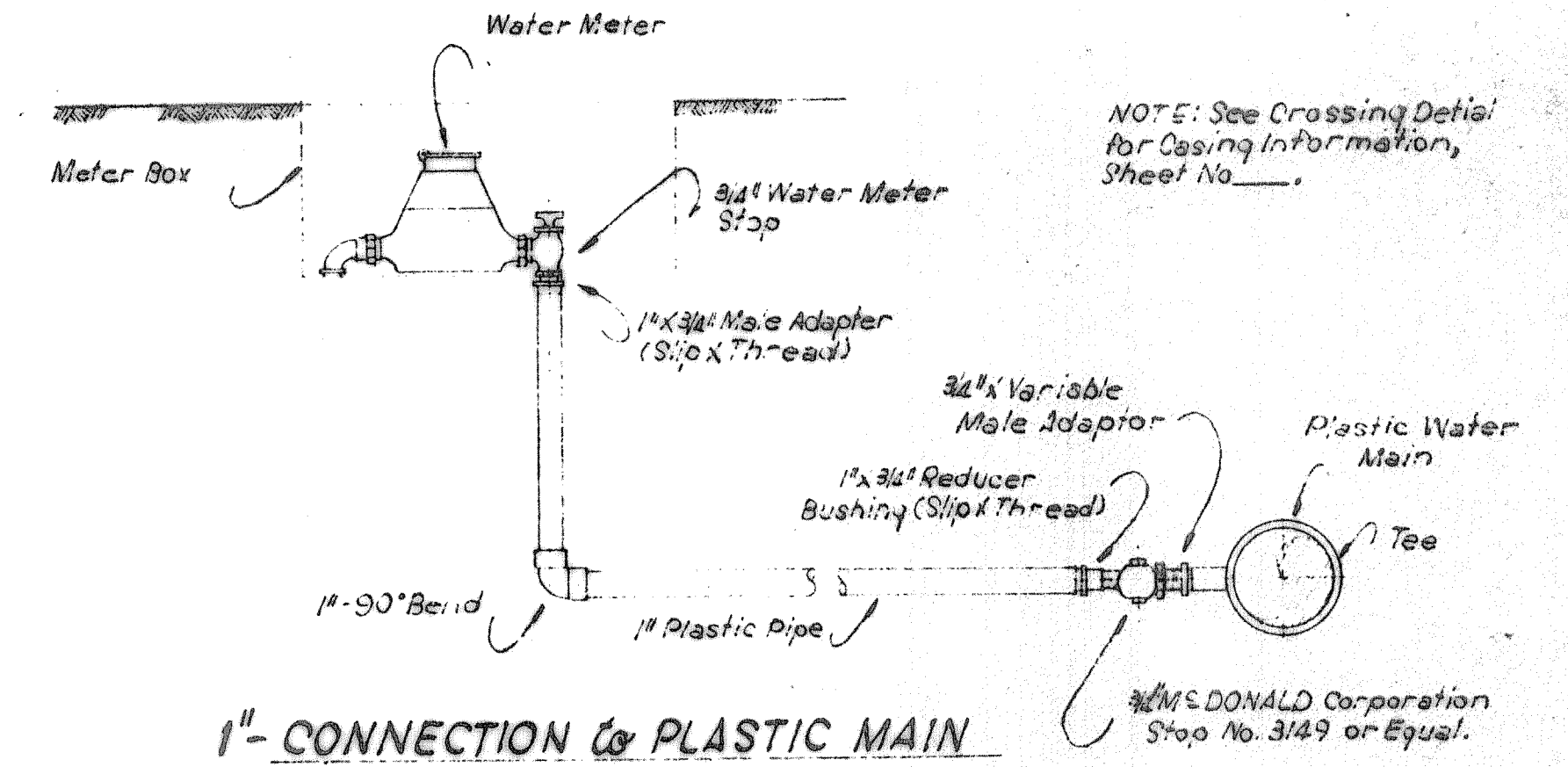


MATERIAL DESCRIPTION
 1, 2, 4, & 5 — 0" Tip, 0" Butt - 8' Cedar Posts
 3 — 5' - 5" Long Cedar Post
 12 Gauge, 4 Point Galvanized Wire

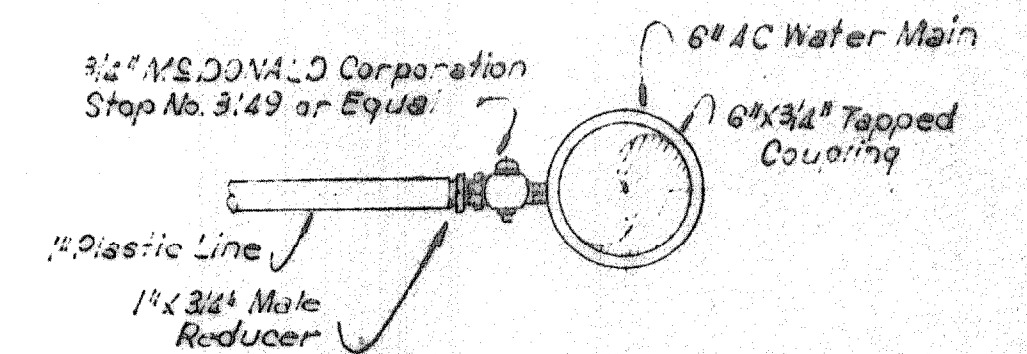
TYPICAL GATE for BARBED WIRE FENCE
 Not to Scale



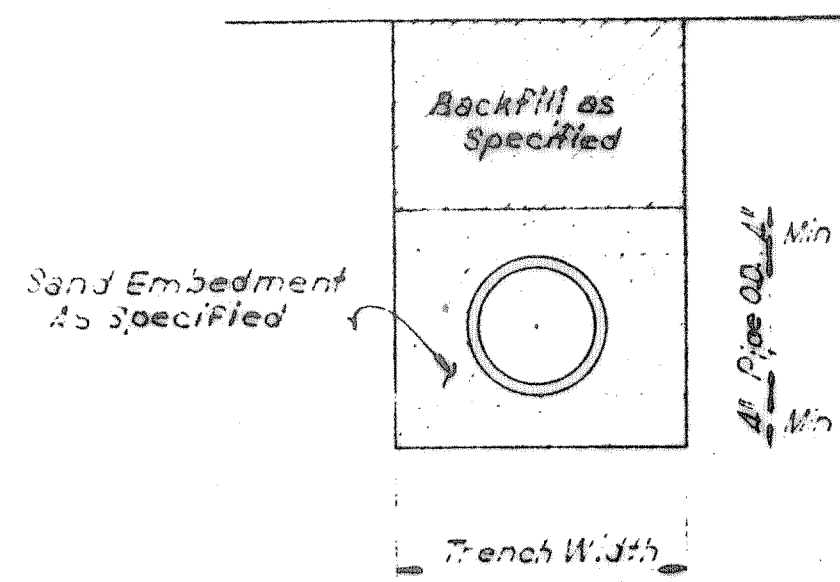
TYPICAL THRUST BLOCK DETAIL
 Not to Scale



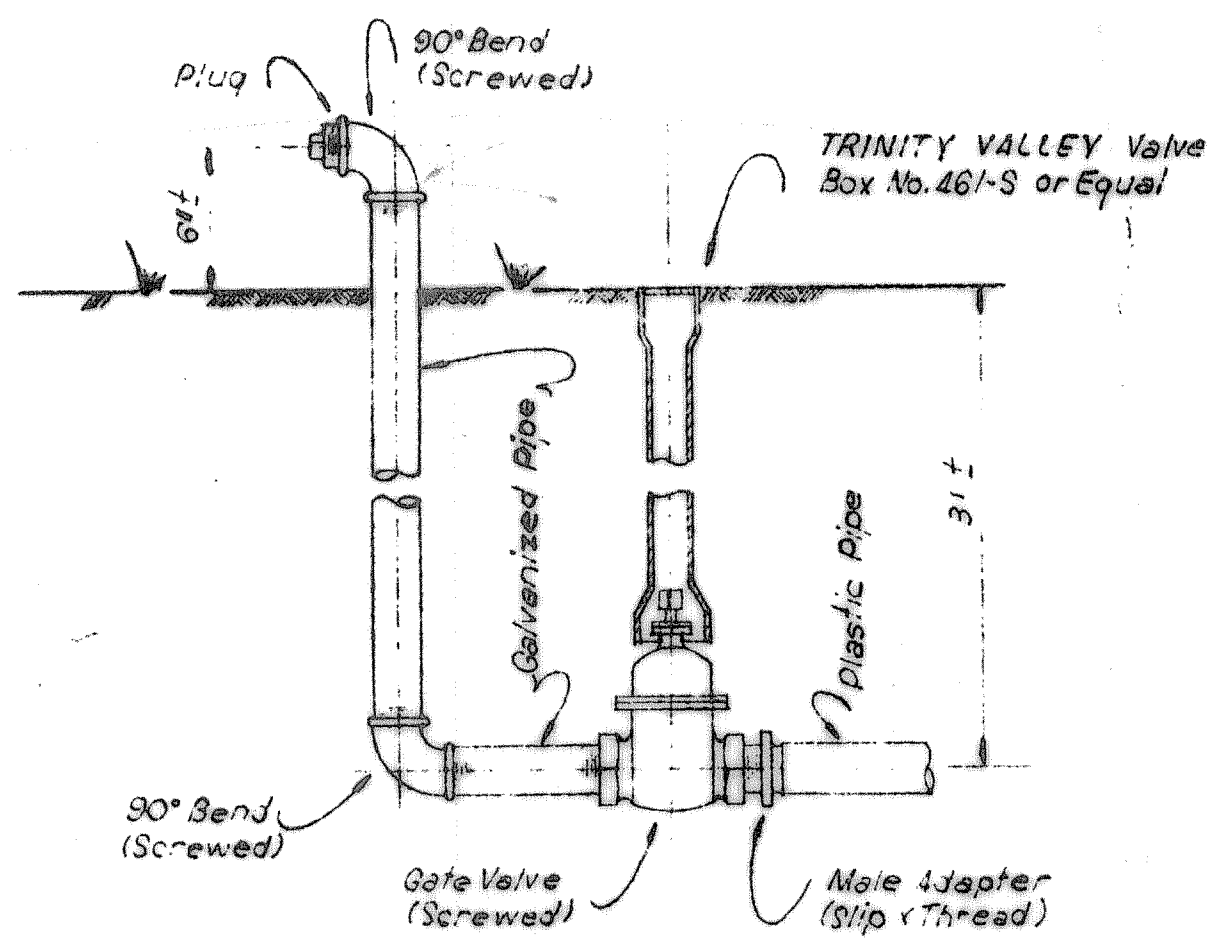
1" CONNECTION to PLASTIC MAIN



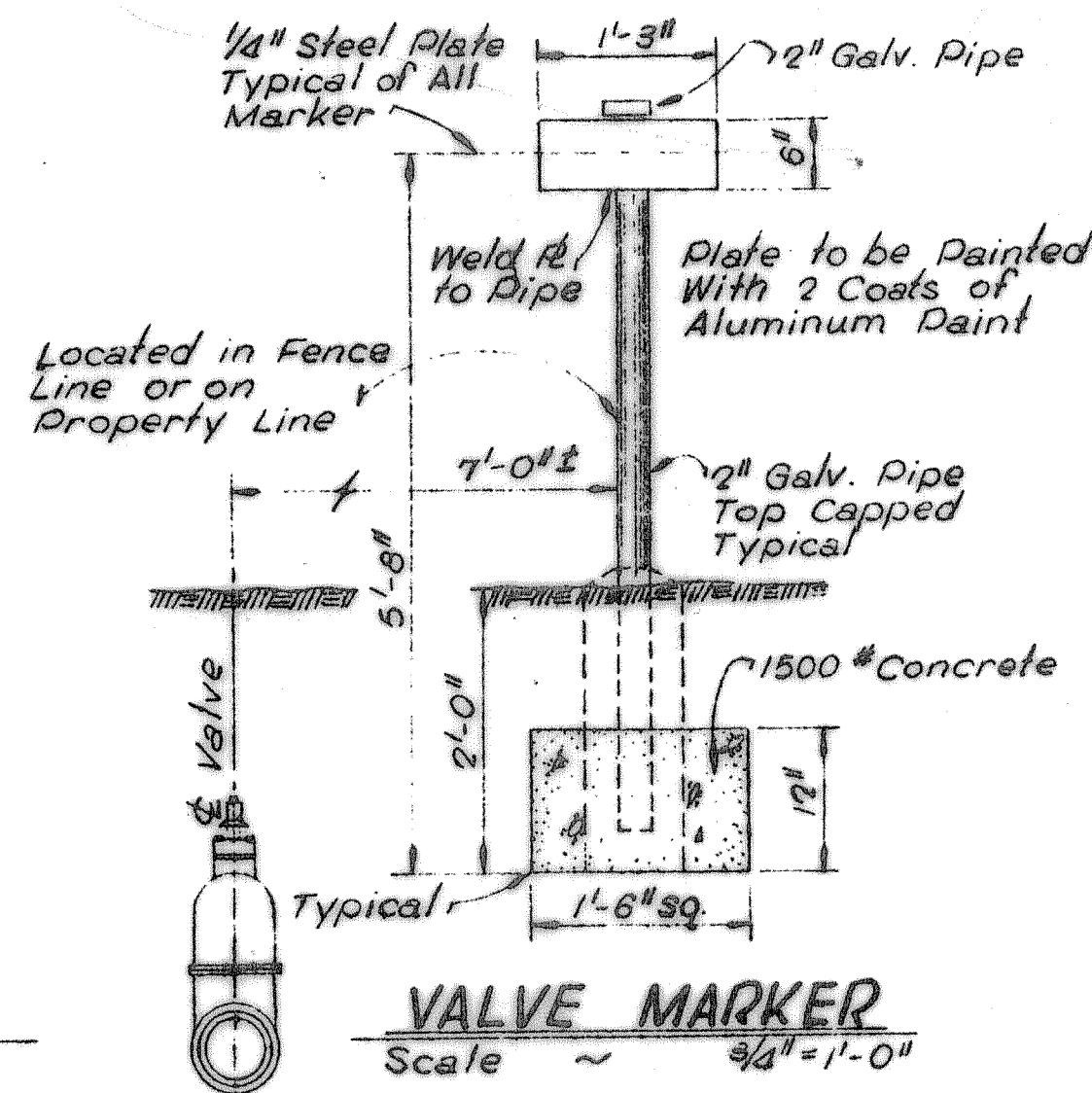
1" CONNECTION to A.C. MAIN



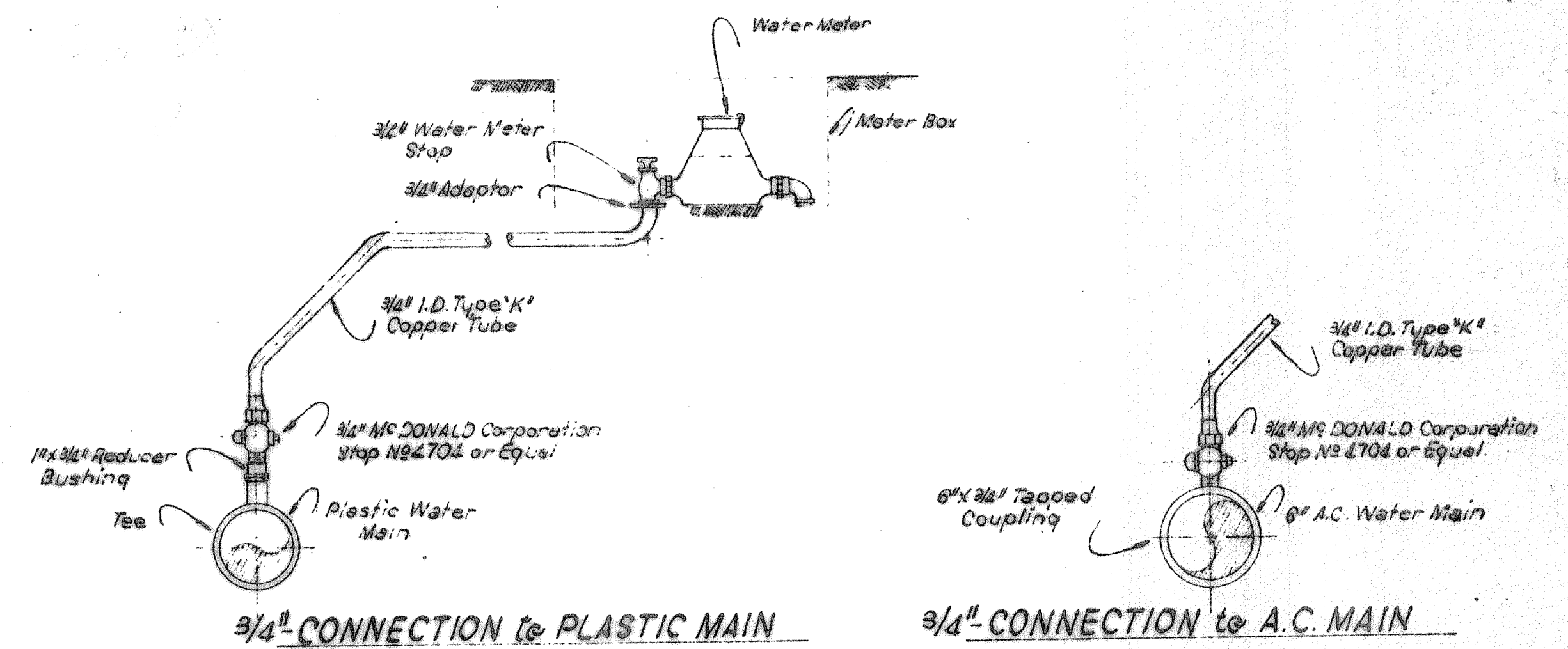
EMBEDMENT DETAIL
 Not to Scale



TYPICAL BLOWOFF DETAIL
 Not to Scale



VALVE MARKER
 Scale ~ 3/4" = 1'-0"



3/4" CONNECTION to PLASTIC MAIN

3/4" CONNECTION to A.C. MAIN

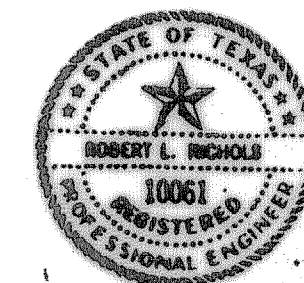
TYPICAL SERVICE CONNECTION DETAILS for SERVICE LINE NOT CROSSING ROAD
 Not to Scale

ILT

JANUARY, 1968

BLACKLAND WATER SUPPLY CORP.
 ROCKWALL COUNTY, TEXAS
WATER DISTRIBUTION SYSTEM

MISCELLANEOUS DETAILS



DESIGNED: O.L.D.	DATE: Feb. 1966
DRAWN: C.D.G.	SCALE: 1" = 100'
TRACED: C.D.G.	FRESE, NICHOLS & ENDRESS CONSULTING ENGINEERS FORT WORTH, TEXAS
CHECKED: R.A.N.	