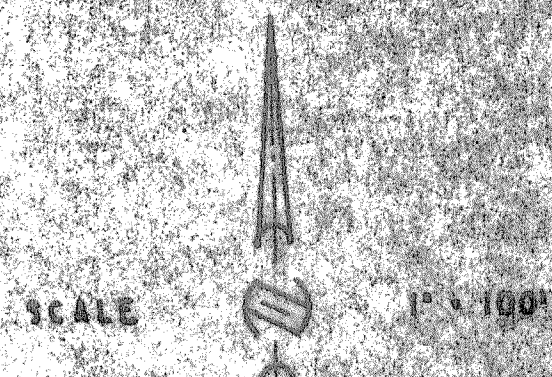
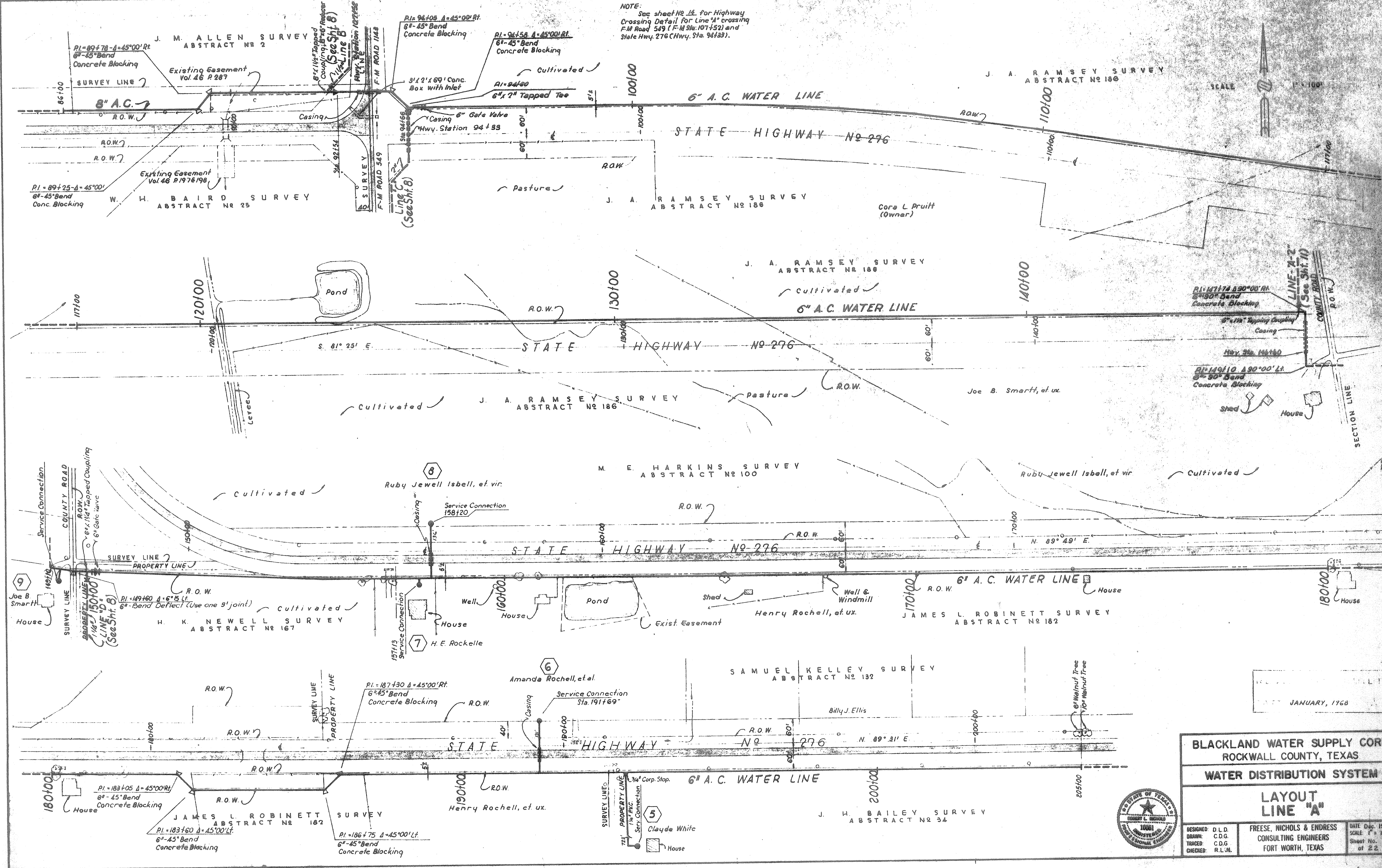


NOTE:
See sheet No. 1A for Highway
Crossing Detail for Line "A" crossing
F.M. Road 349 (F.M. Sta. 107+52) and
State Hwy. 276 (Hwy. Sta. 94+33).



JANUARY, 1968

BLACKLAND WATER SUPPLY CORP.
ROCKWALL COUNTY, TEXAS
WATER DISTRIBUTION SYSTEM

LAYOUT
LINE "A"

DESIGNED: D.L.D.
DRAWN: C.D.G.
TRACED: C.D.G.
CHECKED: R.L.N.

FRESE, NICHOLS & ENDRESS
CONSULTING ENGINEERS
FORT WORTH, TEXAS

DATE: Dec. 1965
SCALE: 1" = 100'
Sheet No. of 22

