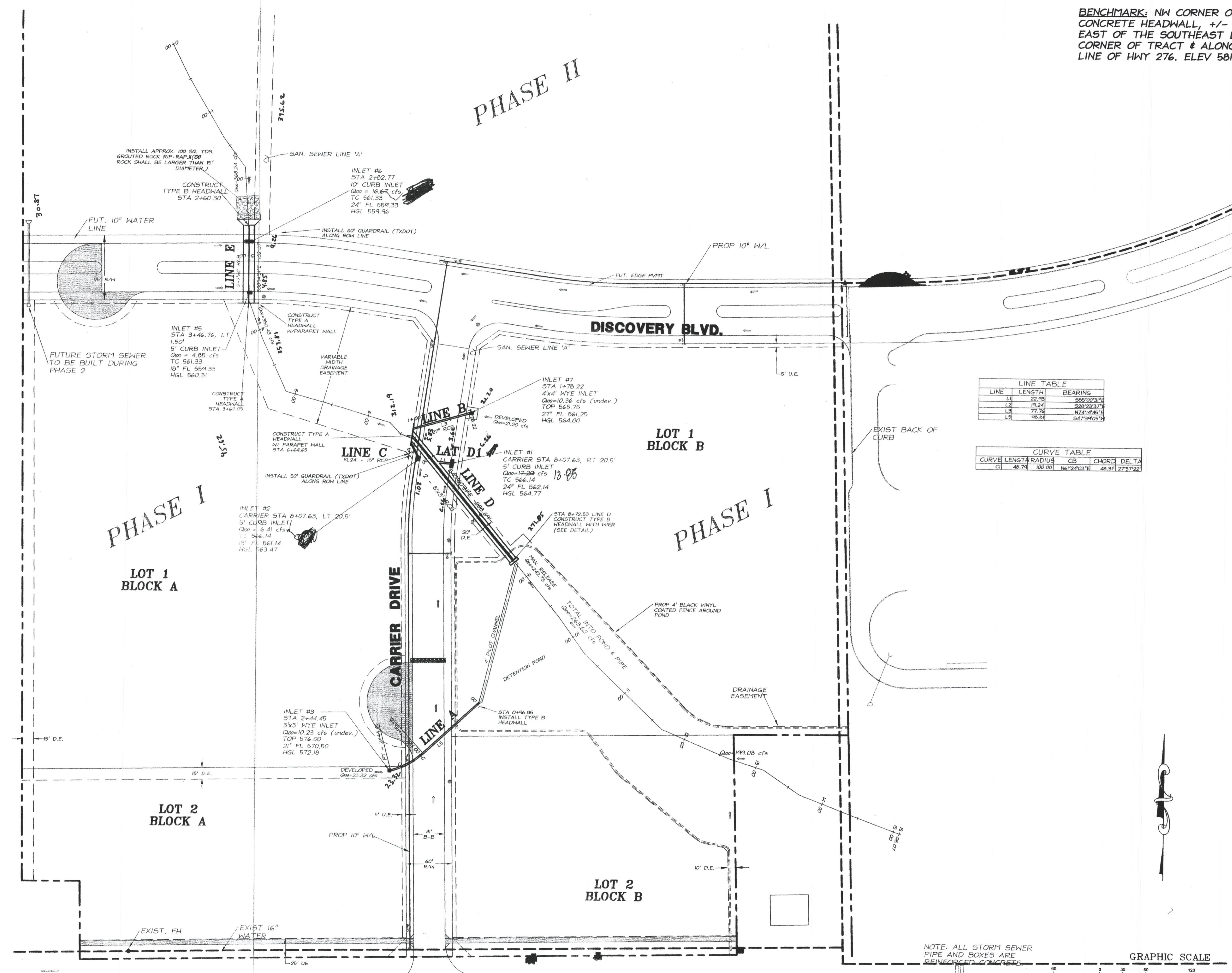


BENCHMARK: NW CORNER OF CONCRETE HEADWALL, +/- 285' EAST OF THE SOUTHEAST LOT CORNER OF TRACT # ALONG N. ROW LINE OF HWY 276. ELEV 581.52.

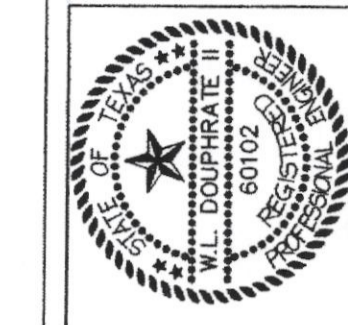


LINE TABLE

LINE	LENGTH	BEARING
L1	22.78	S85°00'31"E
L2	19.24	S29°23'37"W
L3	77.76	N74°44'26"W
L5	78.81	S47°34'05"W

CURVE TABLE

CURVE LENGTH	RADIUS	CB	CHORD	DELTA	
C1	48.74	102.00	N61°24'03"E	48.31	27°57'22"



THE SEAL APPEARING ON THIS DRAWING IS AUTHORIZED BY W.L. DOUPHRATE II, TEXAS P.E. NO. 60102 ON

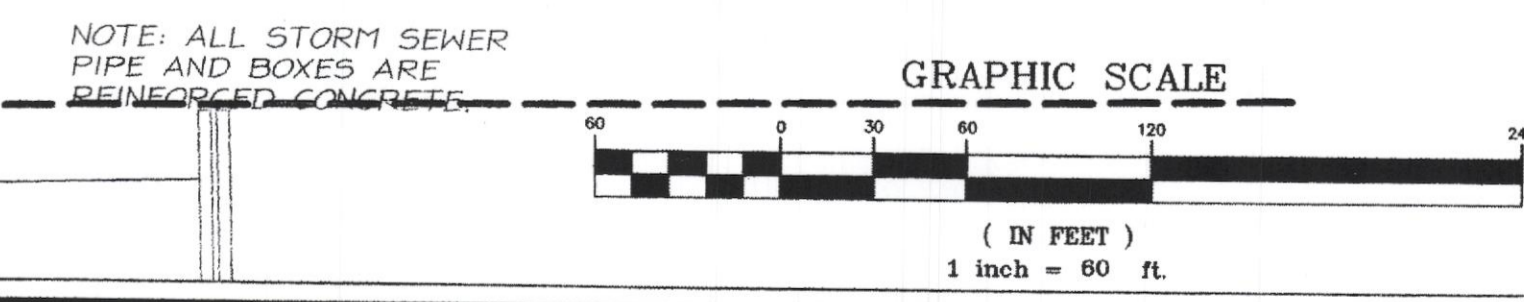
DOUPHRATE & ASSOCIATES, INC.
 ENGINEERING - PROJECT MANAGEMENT - SURVEYING
 2235 RIDGE RD., # 200 ROCKWALL, TEXAS 75087
 PHONE: (972)771-9004 FAX: (972)771-9005

STORM SEWER PLAN
ROCKWALL DISTRIBUTION COMPLEX - PH. I
 CITY OF ROCKWALL
 ROCKWALL COUNTY, TEXAS

REVISIONS

NO.	DATE	BY	DESCRIPTION
1	08/01/08	W.L. DOUPHRATE II	PREP FOR DEVELOPER

CHECKED: W.L.D.
 DRAWN: A.L.
 DATE: 08/01
 DRAWING: 0033STM1
 PROJECT: 0033



STATE HWY 276