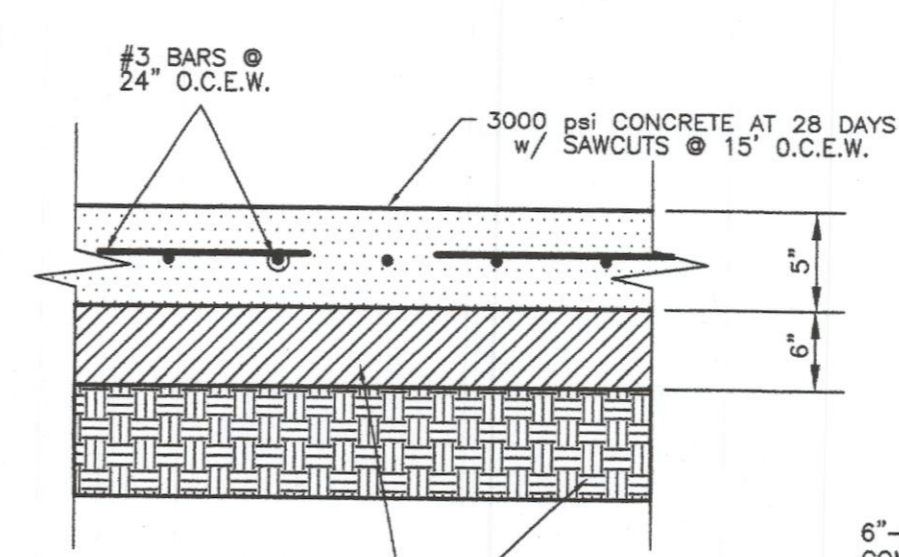
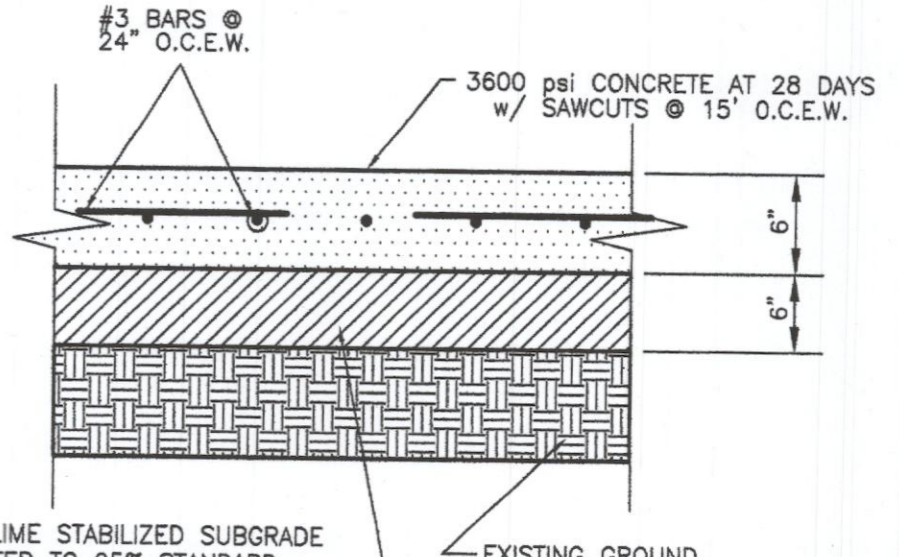


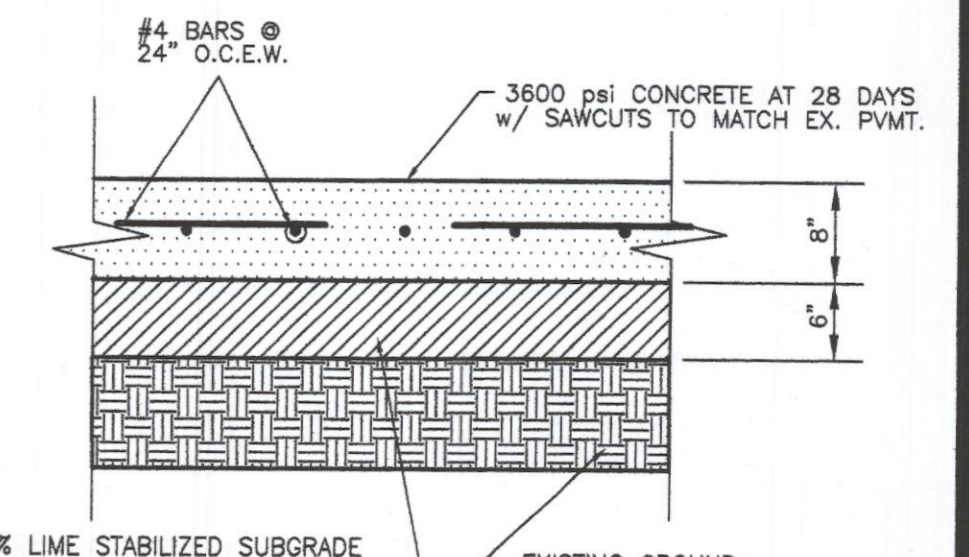
- NOTES:
- NO. 5 SMOOTH DOWEL BAR MAY BE USED IN 5 INCH AND 6 INCH PAVEMENT THICKNESS.
 - LONGITUDINAL BUTT CONSTRUCTION MAY BE UTILIZED IN PLACE OF LONGITUDINAL HINGED (KEYWAY) JOINT AT CONTRACTORS OPTION (FOR PARKING PAVEMENT ONLY).
 - DOWEL BARS SHALL BE DRILLED INTO PAVEMENT HORIZONTALLY BY USE OF A MECHANICAL RIG. DRILLING BY HAND IS NOT ACCEPTABLE. PUSHING DOWEL BARS INTO GREEN CONCRETE IS NOT ACCEPTABLE.



REGULAR DUTY CONCRETE PAVEMENT SECTION
N.T.S.



HEAVY DUTY CONCRETE PAVEMENT SECTION
N.T.S.



RANCH TRAIL CONCRETE PAVEMENT SECTION
N.T.S.

SITE PAVING GENERAL NOTES:

- ALL CONCRETE PAVING SHALL BE OF THE THICKNESS AND STRENGTH SHOWN ON THE PLANS. CONCRETE STRENGTH TO BE DETERMINED AT 28 DAYS. CONCRETE WILL BE 6 SACK MINIMUM IF MACHINE POURED AND 6.5 SACK MINIMUM IF HAND POURED. REINFORCING SHALL BE #3 BARS (GRADE 60) @ 24" O.C.E.W. (#4 BARS IN RANCH TRAIL ROW) AND 100% TIED REINFORCING SHALL BE SUPPORTED BY CHAIRS SPACED AT 16 S.F. (4' x 4' PATTERN) MAXIMUM INTERVAL. SAWCUTS SHALL BE 15' O.C.E.W.
- PROOF ROLL SUBGRADE WITH HEAVY PNEUMATIC EQUIPMENT. ANY SOFT OR PUMPING AREAS SHOULD BE EXCAVATED TO A FIRM SUBGRADE AND BACKFILLED FOLLOWING PROCEDURES DESCRIBED IN THE SITE GRADING SECTION OF THE PROJECT SOILS REPORT. SCARIFY SUBGRADE TO A DEPTH OF 6" LIME STABILIZE AT 6% AND UNIFORMLY COMPACT TO A MINIMUM 95% STANDARD PROCTOR DENSITY AT -2 TO +2% OPTIMUM MOISTURE CONTENT. SUBGRADE SHOULD BE SCARIFIED TO A DEPTH OF 6" PRIOR TO COMPACTION.
- SEALANT TO BE 0444 ASPHALT OR A RUBBER BASED COMPOUND. SPECIFICATIONS TO BE SUBMITTED TO THE ENGINEER PRIOR TO INSTALLATION.
- BREAKOUTS FOR REMOVAL OF EXISTING PAVEMENT AND CURBS SHALL BE MADE BY SAW CUT WHEN ADJACENT TO PROPOSED PAVING AND/OR CURBS.
- PROPOSED CONCRETE CURBS SHALL MATCH ELEVATIONS OF EXISTING CURBS.
- CONCRETE TO BE BROOM FINISHED AND CURED FOR A MINIMUM OF 72 HOURS.
- FIRE LANES SHALL BE MARKED ON THE VERTICAL FACE OF THE CURB ALONG THE ENTIRE LENGTH OF THE FIRELANE WITH A SIX INCH (6") WIDE STRIPE USING RED TRAFFIC PAINT, WITH WORDING "NO PARKING" AND "FIRE LANE" PAINTED ON THE LINES AT INTERVALS OF TWENTY-FIVE FEET (25'). THE LETTERING WILL BE FOUR INCHES (4") HIGH WITH A ONE INCH (1") WIDE STROKE PAINTED WITH WHITE TRAFFIC PAINT.
- ALL PARKING SPACES AND STRIPED ISLANDS SHOWN ON PROPOSED SITE SHALL BE MARKED WITH 4" WIDE WHITE PAINTED PAVEMENT STRIPING. ALL PARKING SPACES ARE 9' IN WIDTH UNLESS OTHERWISE NOTED.
- ALL WORKMANSHIP AND MATERIALS SHALL BE IN ACCORDANCE WITH CITY OF ROCKWALL STANDARD SPECIFICATIONS AND NCTCOG 3RD EDITION STANDARDS AND/OR SPECIFICATIONS ESTABLISHED BY THIS PROJECT. THE MOST STRINGENT SHALL APPLY.
- CONTRACTOR SHALL SUBMIT A JOINT SPACING PLAN TO THE ENGINEER PRIOR TO PLACEMENT OF CONCRETE PAVEMENT. CONTROL JOINTS SHALL BE INSTALLED AT A MAXIMUM SPACING OF 15' O.C.E.W. EXPANSION JOINTS SHALL BE INSTALLED AT A MAXIMUM SPACING OF 90' EXCEPT FIRELANE AS SHOWN. LEVEL UP SAND WILL NOT BE ALLOWED UNDER CONCRETE PAVING. PAVEMENT TO BE POURED IN 30' STRIPS MAX. OR PUMPED.
- CONTRACTOR TO PROVIDE TWO YEAR MAINTENANCE BOND ON ALL PAVEMENT, WATER & SANITARY SEWER AND DRAINAGE.
- CONTRACTOR SHALL OBTAIN THE LATEST COPY OF CITY OF ROCKWALL STANDARD DETAILS AND NCTCOG 3RD EDITION STANDARDS TO USE IN CONJUNCTION WITH THESE PLANS FOR THE INSTALLATION OF UTILITY LINES AND PAVING IMPROVEMENTS, WITHIN THE PUBLIC R.O.W. AND/OR PUBLIC EASEMENTS.

LEGEND

- EXISTING SANITARY SEWER MANHOLE
- PROPOSED SANITARY SEWER MANHOLE
- PP ○ EXISTING POWER POLE W/ GUY ANCHOR
- EXISTING FIRE HYDRANT
- PROPOSED FIRE HYDRANT
- PROPOSED WATER METER
- PROPOSED MONUMENT SIGN
- PROPOSED LIGHT POLES
- PROPOSED CURB INLET
- F.D.C. ○ PROPOSED FIRE DEPT. CONNECTION
- PROPOSED TRANSFORMER
- EXISTING CONCRETE PAVEMENT
- 5" REGULAR DUTY 3000 PSI CONC. PAVEMENT
- 6" HEAVY DUTY 3600 PSI CONC. PAVEMENT
- 8" PUBLIC 3600 PSI CONC. PAVEMENT (REF. PLANS FOR RANCH TRAIL WIDENING DATED NOVEMBER 2004 BY WRIGHT ENGINEERING)
- REFERENCE DETAIL SECTION

BENCHMARK:
600 NAIL IN POWER POLE ALONG HORIZON ROAD R.O.W. LINE ±208' SOUTHEAST OF RANCH TRAIL RD. ELEVATION: 542.51

BENCHMARK
RIM OF SEWER MANHOLE ±8' OFF HORIZON ROAD R.O.W. LINE ±307' SOUTHEAST OF RANCH TRAIL RD. ELEVATION: 538.00

1	09-16-09	INITIAL SUBMITTAL TO THE CITY OF ROCKWALL
2	10-15-09	REVISED SUBMITTAL TO THE CITY OF ROCKWALL

Walls & Associates
Consulting Civil Engineers · Designers · Planners
F-7863

530 S. Carrier Pkwy, Ste. 200
Grand Prairie, Texas 75051
Fax: (972) 237-9097

Contact: David W. Walls, P.E.
Phone: 214-724-0983
Email: davidwalls@abglobal.net

PAVING PLAN
RANCH TRAIL CORNERS
LOT 20, BLOCK A - RAINBO ACRES ADDITION
N.E.C. HORIZON ROAD (F.M. 3097) AND RANCH TRAIL DR.
CITY OF ROCKWALL, ROCKWALL COUNTY, TEXAS

DESIGN	DRAWN	CHECKED	SCALE	DATE	FILE	SHEET
Walls	Lovecchio	Martinez	1" = 40'	08/15/09	9005	C-03



THE SEAL APPEARING ON THIS DOCUMENT WAS AUTHORIZED BY DAVID W. WALLS, P.E. 93086