

INLET CALCULATION CHART																		
INLET NO.	DRAINAGE AREA SERVED	DESIGN FREQ. (YR.)	TIME Tc (min)	INTENSITY I (in/hr)	DEV. RUNOFF C	DRAINAGE AREA O (AC)	DEV. Q (cfs)	UNDEV. Q (cfs)	TOTAL INTO INLET (cfs)	BYPASS FROM INLET (cfs)	TOTAL Q (cfs)	GUTTER CAPACITY (cfs)	GUTTER SLOPE %	LENGTH (ft)	INLET CAPACITY (cfs)	BYPASS TO NEXT INLET	INLET TYPE	
																		12
1	12	100	10	9.8	0.9	0.56	4.94	-	-	-	-	44	1.5	174	-	-	-	CURB (SAG)
	13	100	10	9.8	0.9	0.13	1.15	-	-	-	-	44	1.5	174	-	-	-	CURB (SAG)
	8	100	10	9.8	0.7	1.44	9.88	-	-	-	-	44	1.5	174	10	21	0	CURB (SAG)
	14	100	10	9.8	0.9	0.56	4.94	-	-	-	-	44	1.5	174	-	-	-	CURB (SAG)
	15	100	10	9.8	0.7	0.13	1.15	-	-	-	-	44	1.5	174	-	-	-	CURB (SAG)
									6.09	-	6.41	44	1.5	174	10	21	0	CURB (SAG)

AREA #	C	I <sub>100</sub>	ACRES	Q <sub>100</sub>	DESCRIPTION
1	0.7	9.8	18.0	123.5	CULVERT #1 (LINE A)
2	0.7	9.8	7.46	51.18	CULVERT #1 (LINE A)
3	0.9	9.8	4.34	38.28	CULVERT #1 (LINE A)
4	0.9	9.8	0.41	3.62	15' INLET STA. 31+37.26 DISCOVERY
5	0.9	9.8	0.45	4.0	15' INLET STA. 31+37.56 DISCOVERY
6	0.7	9.8	4.66	32.0	CULVERT #1 (LINE A)
7	0.7	9.8	3.68	25.24	CULVERT #1 (LINE A)
8	0.7	9.8	1.44	9.88	10' INLET STA. 7+10.00 CARRIER
9	0.9	9.8	0.56	4.94	15' INLET STA. 31+37.26 DISCOVERY
10	0.9	9.8	0.56	4.94	15' INLET STA. 31+37.56 DISCOVERY
11	0.7	9.8	31.85	218.5	OFFSITE
12	0.9	9.8	0.56	4.94	10' INLET STA. 7+10.00 CARRIER
13	0.9	9.8	0.13	1.15	10' INLET STA. 7+10.00 CARRIER
14	0.9	9.8	0.56	4.94	10' INLET STA. 7+10.00 CARRIER
15	0.9	9.8	0.13	1.15	10' INLET STA. 7+10.00 CARRIER
16	0.7	9.8	2.16	14.82	CULVERT LINE 'C' DISCOVERY
17	0.7	9.8	0.48	3.29	CULVERT LINE 'C' DISCOVERY
18	0.9	9.8	0.26	2.30	15' INLET STA. 31+37.26 DISCOVERY
19	0.9	9.8	0.25	2.21	15' INLET STA. 31+37.56 DISCOVERY
20	0.7	9.8	8.47	58.10	CULVERT LINE 'C' DISCOVERY
21	0.7	9.8	4.12	28.26	LATERAL '02' DISCOVERY
22	0.9	9.8	0.23	2.03	10' INLET STA. 36+29.22 DISCOVERY
23	0.9	9.8	0.22	1.95	10' INLET STA. 36+29.22 DISCOVERY
24	0.9	9.8	0.31	2.73	10' INLET STA. 36+29.22 DISCOVERY
25	0.9	9.8	0.33	2.91	10' INLET STA. 36+29.22 DISCOVERY
26	0.8	9.8	5.84	45.78	OFFSITE
27	0.8	9.8	1.94	15.21	OFFSITE
28	0.8	9.8	2.03	15.92	OFFSITE

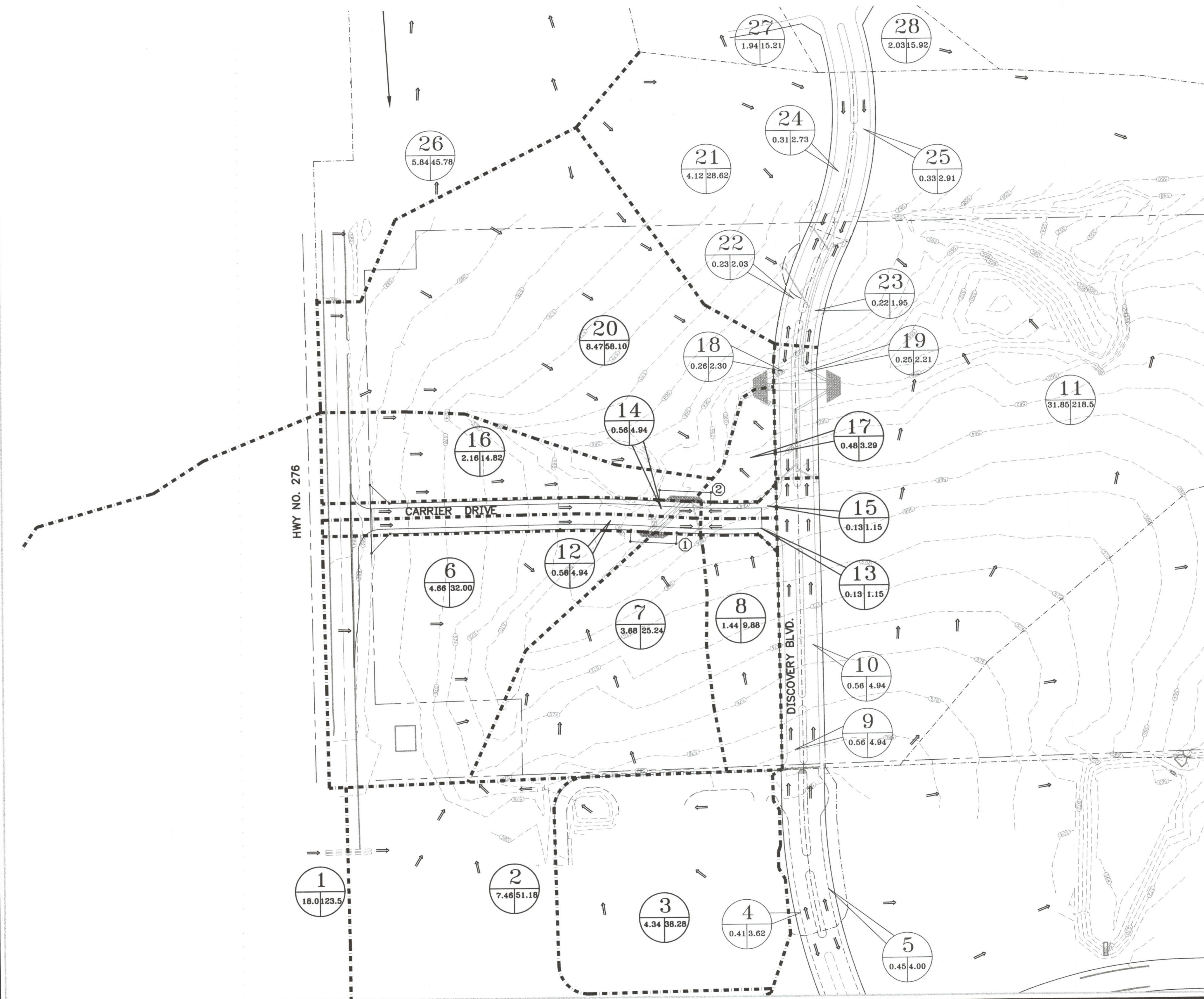
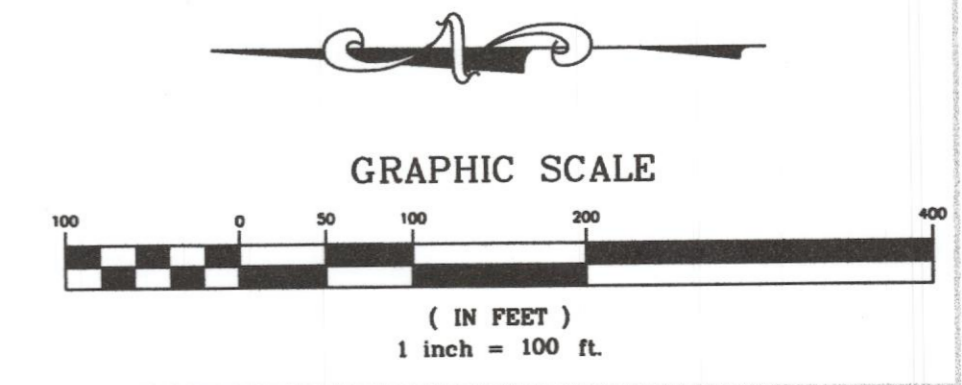
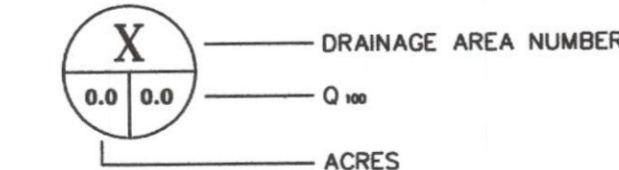
INLET LIST

INLET NO.	INLET TYPE
1	STA. 7+10.00 10' - CURB (SAG)
2	STA. 7+10.00 10' - CURB (SAG)

BENCHMARK: NW CORNER OF CONCRETE HEADWALL, 40' +/- NORTH OF CL OF S.H. 276 & 750' +/- WEST OF INNOVATION PARKWAY.  
 N 7019108.87  
 E 2604994.01  
 ELEV = 581.52

BENCHMARK: "X" CUT TOP OF CURB INLET ON THE EAST SIDE OF S.H. 205 BYPASS & 235' +/- NORTH OF CL S.H. 276  
 N 7019277.75  
 E 2603427.60  
 ELEV = 577.54

GRADING NOTE: THE CONTRACTOR SHALL GRADE TO DRAIN INTO THE WYE INLETS SHOWN.



THE SEAL APPEARING ON THIS DOCUMENT WAS AUTHORIZED BY THE BOARD OF ENGINEERS IN TEXAS P.L. NO. 60102 ON

DUPHRETE & ASSOCIATES, INC.  
 ENGINEERING - PROJECT MANAGEMENT - SURVEYING  
 2235 RIDGE RD., # 200 ROCKWALL, TEXAS 75087  
 PHONE: (972)771-9004 FAX: (972)771-9005

OVERALL DRAINAGE AREA MAP  
 PROPOSED CARRIER DRIVE  
 CITY OF ROCKWALL  
 COUNTY OF ROCKWALL

REVISION
CHECKED W.L.D.
DRAWN R.C.T.
DATE 04/2010
DRAWING 10004DAM
PROJECT 10004
6 OF 23