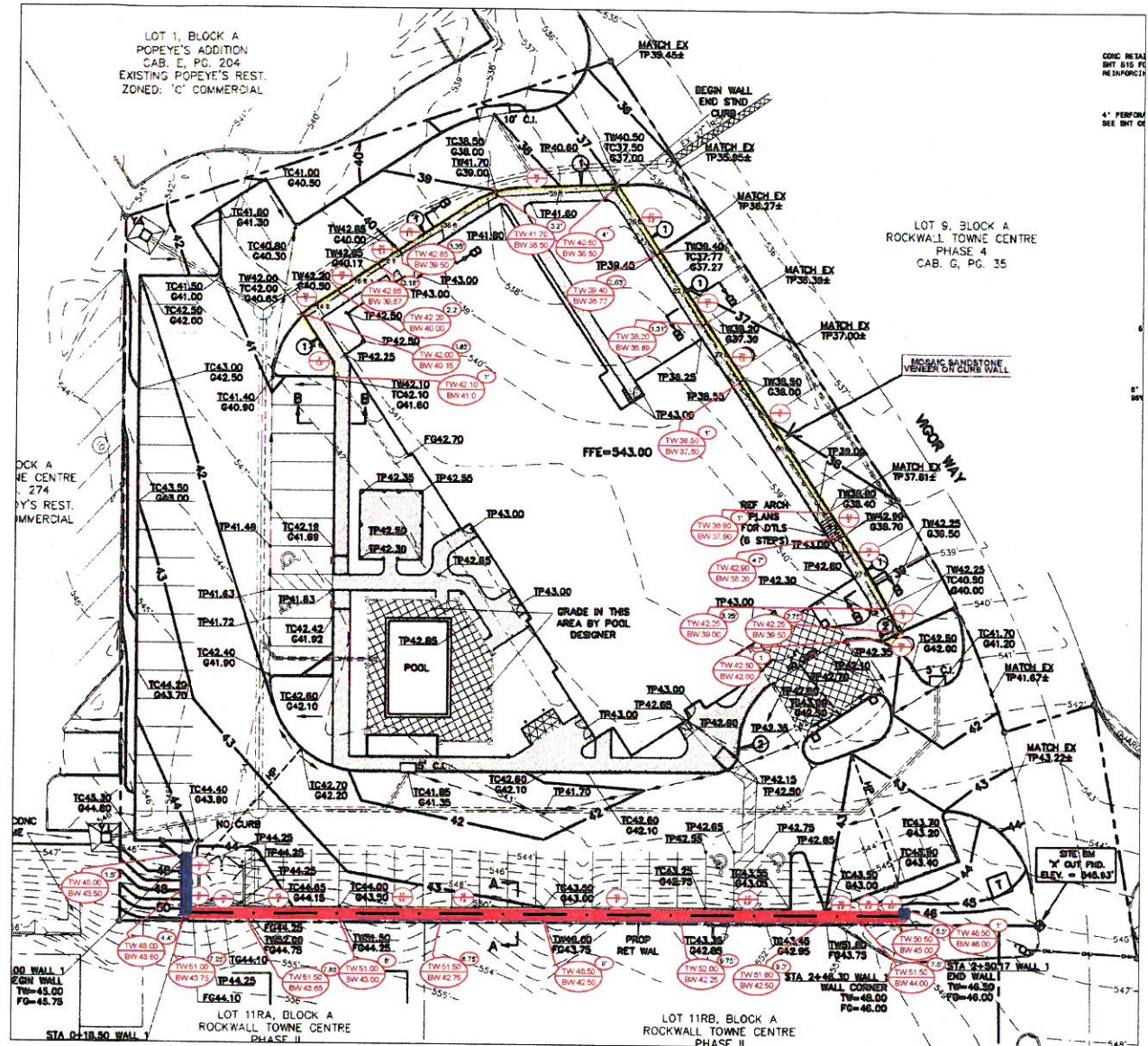


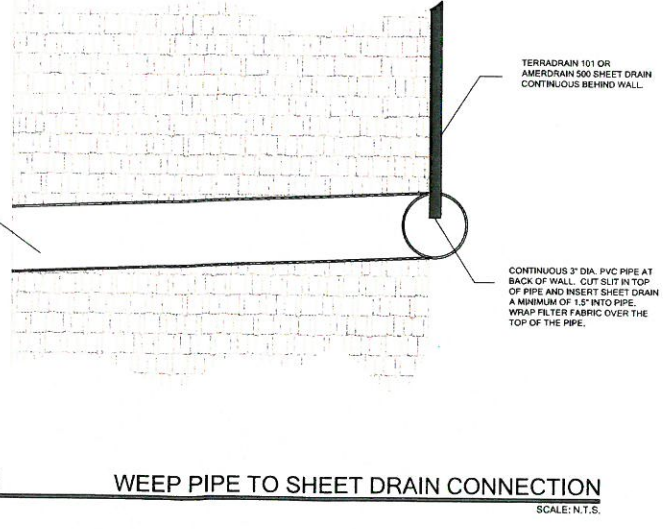
RW2/1 MASONRY WALL SCHEDULE - 3000 psf - VERTICAL									
BEARING CAPACITY ON NATURAL SOIL OR COMPACTED AND TESTED FILLS									
WALL HEIGHT	BASE WIDTH	TOE DEPTH [TOE]	BASE DEPTH [HEEL]	BATTER	FULLY MORTARED ZONE	THICKNESS OF WALL	DRAINAGE ZONE THICKNESS	BEARING CAPACITY	
H	B	B1	C1	A		T	G		
4'-0"	4'-0"	1'-0"	1'-3"	0'-6"	0'-0"	FULLY	3'-0"	3000 psf	
5'-0"	4'-3"	1'-3"	1'-6"	0'-7"	0'-0"	FULLY	3'-0"	DRAINAGE BOARD	
6'-0"	5'-6"	2'-3"	1'-8"	0'-9"	0'-0"	FULLY	3'-3"	DRAINAGE BOARD	
7'-0"	6'-6"	2'-6"	1'-10"	0'-10"	0'-0"	FULLY	4'-0"	DRAINAGE BOARD	
8'-0"	7'-0"	3'-0"	2'-2"	1'-1"	0'-0"	FULLY	4'-0"	DRAINAGE BOARD	
9'-0"	8'-0"	4'-0"	2'-6"	1'-4"	0'-0"	FULLY	4'-0"	DRAINAGE BOARD	
10'-0"	8'-6"	4'-6"	3'-0"	1'-6"	0'-0"	FULLY	4'-0"	DRAINAGE BOARD	
11'-0"	9'-3"	5'-0"	3'-3"	1'-8"	0'-0"	FULLY	4'-3"	DRAINAGE BOARD	

WALL DESIGN CRITERIA						
BEARING	SLOPE TOP	SLOPE BOT	ACTIVE PRESSURE	PASSIVE PRESSURE	COEFFICIENT OF FRICTION	SURCHARGE
Q_u	β	β_1	ϕ_a	ϕ_p	α	q
3000 psf	14.3 deg	14.3 deg	26 deg	26 deg	0.32	90 deg

RW2/1 MASONRY TOE WALL WITH REINFORCEMENT
SCALE: N.T.S.



RW2/3 RETAINING WALL SITE PLAN
SCALE: N.T.S.



RW2/2 WEEP PIPE TO SHEET DRAIN CONNECTION
SCALE: N.T.S.

VERTICAL FACE RETAINING WALL LOCATION - USE SCHEDULE RW1/1
 VERTICAL FACE TOE RETAINING WALL - USE SCHEDULE RW2/1

REVISION
OCT 11 2018

CITY OF ROCKWALL ENGINEERING DEPT.

RELEASED FOR CONSTRUCTION
 ALL RESPONSIBILITY FOR ADEQUACY OF DESIGN REMAINS WITH THE DESIGN ENGINEER. THE CITY OF ROCKWALL, IN REVIEWING AND RELEASING PLANS FOR CONSTRUCTION, ASSUMES NO RESPONSIBILITY FOR ADEQUACY OR ACCURACY OF DESIGN.

Smash Hager
 CITY DATE **7-9-18**

DIRTSAVERS
 P.O. BOX 566
 ALEDO, TX 76008
 PH: 469.834.7446
 F-14136

BEST WESTERN PLUS
 MASONRY RETAINING WALLS
 ROCKWALL, TEXAS
ERW SITE SOLUTION
 FORT WORTH, TEXAS
 ERW JOB NO. 18-1152

REVISIONS
 No. Date Description
 10.10.18 Corrected Note
 DB: MAM CHKD: MAM APPD: MAM



RETAINING WALL
 DETAILS AND NOTES

Project No. RW100318-1
 Date 10.03.2018
 Last Revision 10.10.18

RW2