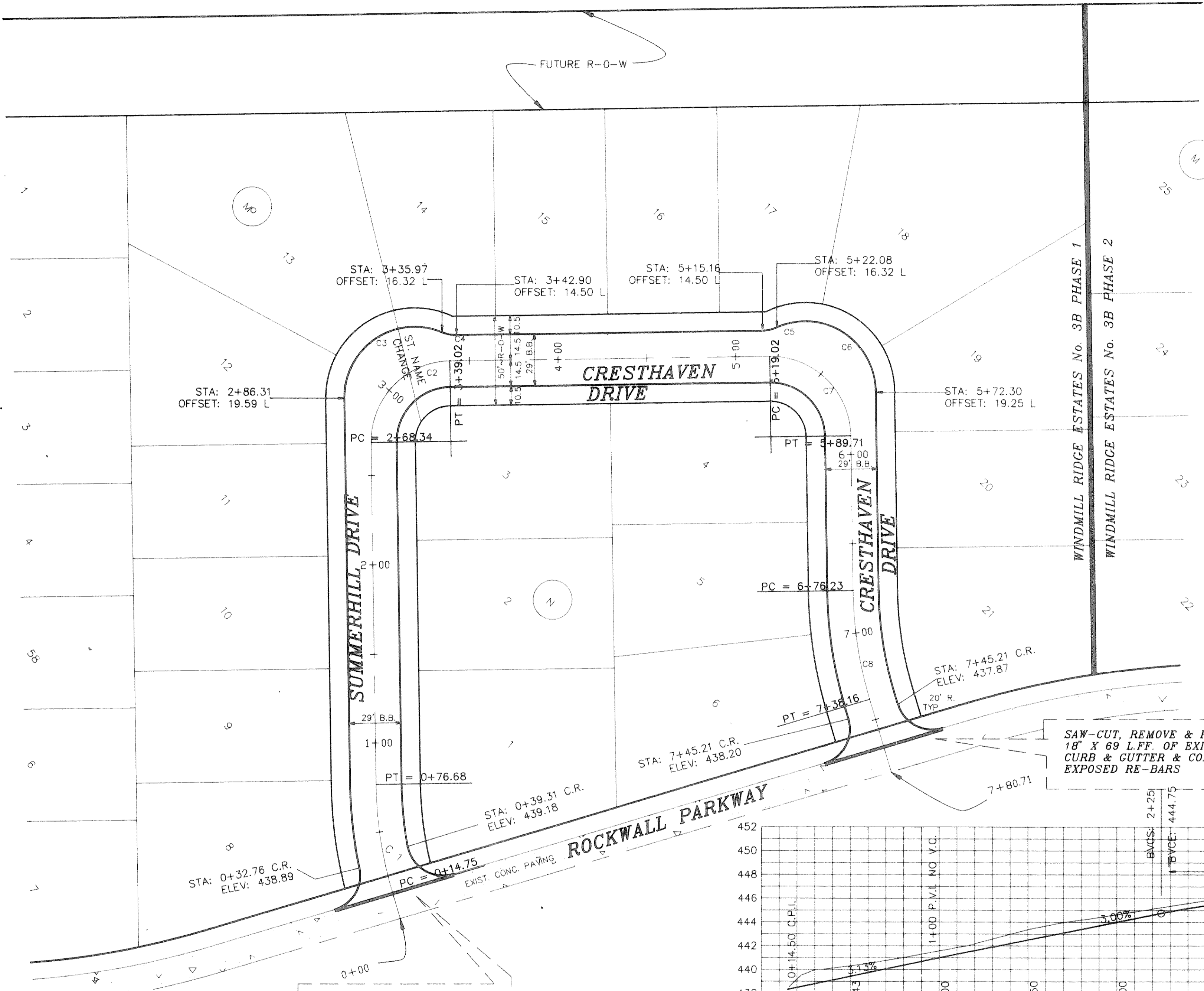


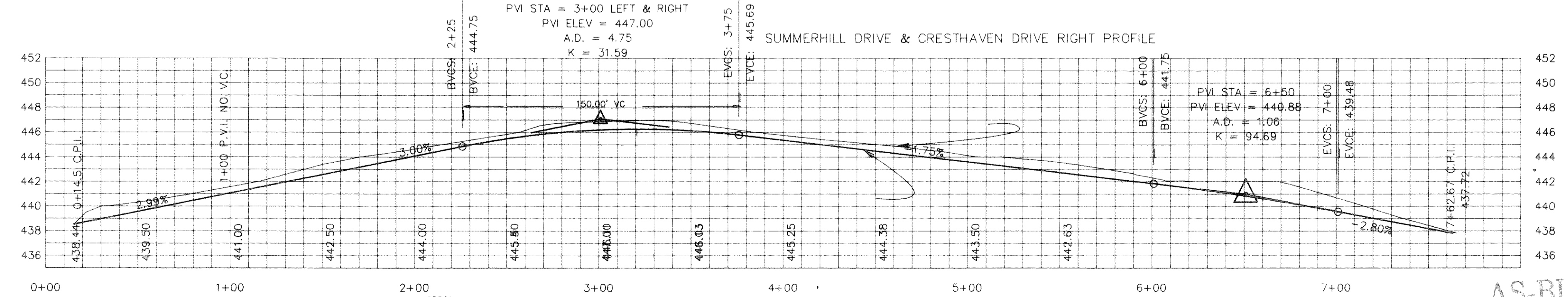
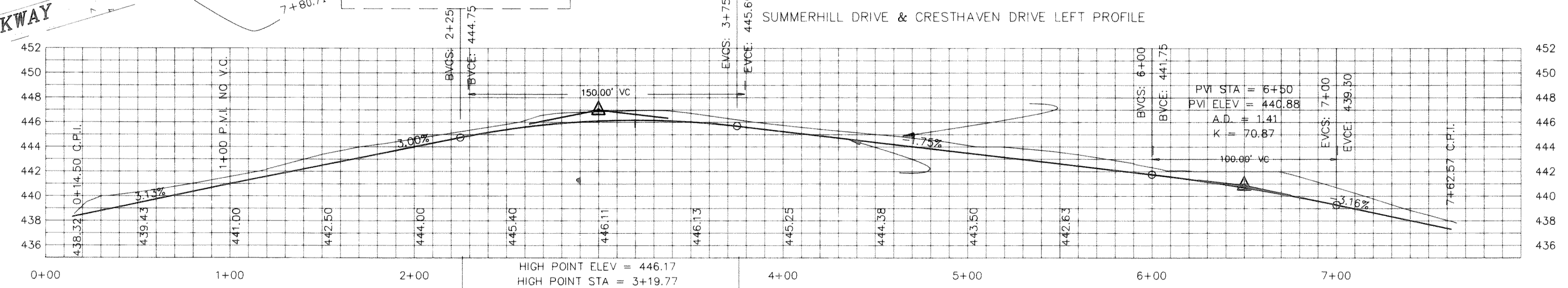
CURVE	RADIUS	LENGTH	TANGENT	CHORD	BEARING	DELTA
C1	225.00'	61.93'	31.18'	61.73'	S08°44'13"E	18°48'12"
C2	45.00'	70.69'	45.00'	63.84'	S44°08'53"W	80°07'00"
C3	39.50'	78.23'	60.22'	66.06'	S56°03'53"W	113°28'47"
C4	20.00'	8.26'	4.19'	8.20'	S79°01'25"E	23°38'24"
C5	20.00'	8.26'	4.19'	8.20'	N77°19'11"E	23°38'24"
C6	39.50'	78.11'	61.71'	66.54'	N57°07'57"E	114°43'07"
C7	45.00'	70.69'	45.00'	63.84'	N45°51'07"W	80°07'00"
C8	225.00'	61.93'	31.18'	61.73'	S08°44'13"E	18°48'12"



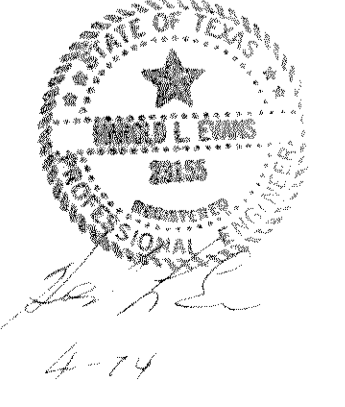
SAW-CUT, REMOVE & REPLACE 18" X 69 L.F.F. OF EXIST. CONC CURB & CUTTER & CONN. TO EXPOSED RE-BARS

B.M.  
SQUARE ON TOP OF 10" INLET ON N.W. SIDE ROCKWALL PARKWAY, 85' S.W. OF CENTERLINE OF AUTUMN TRAIL.  
ELEVATION = 535.21

B.M.  
CENTERLINE OF TOP OF 15" INLET ON N.W. SIDE OF ROCKWALL PARKWAY, 140' N.E. OF WOODCREEK DRIVE.  
ELEVATION = 527.25



AS-BUILT



REVISION DESCRIPTION	DATE	SCALE	DESIGN	DRAWN	<b>HAROLD L. EVANS</b> CONSULTING ENGINEER P.O. BOX 28363 2331 GUS THOMASSON ROAD, SUITE 102 DALLAS, TEXAS 75228. (214) 328-8133	<b>PAVING PLAN</b> <b>SUMMERHILL DR. &amp; CRESTHAVEN DR.</b> CITY OF ROCKWALL ROCKWALL COUNTY, TEXAS	SHEET NO.
	4/12/94	HORIZ 1" = 40' VERT 1" = 6'	H.L.E.	E.E.R.			5
						JOB NO.	11
							9375