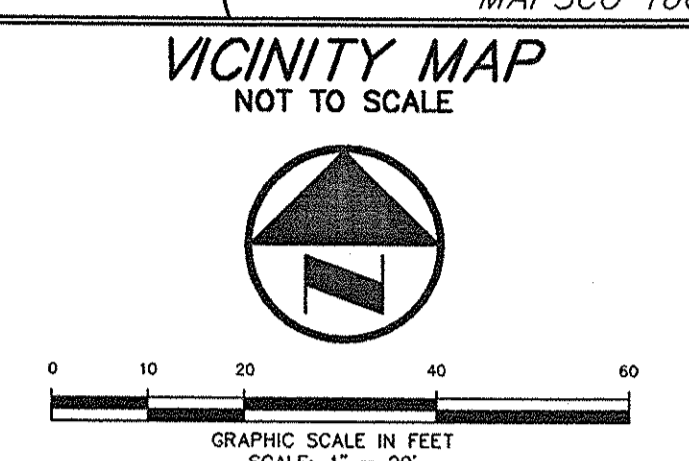
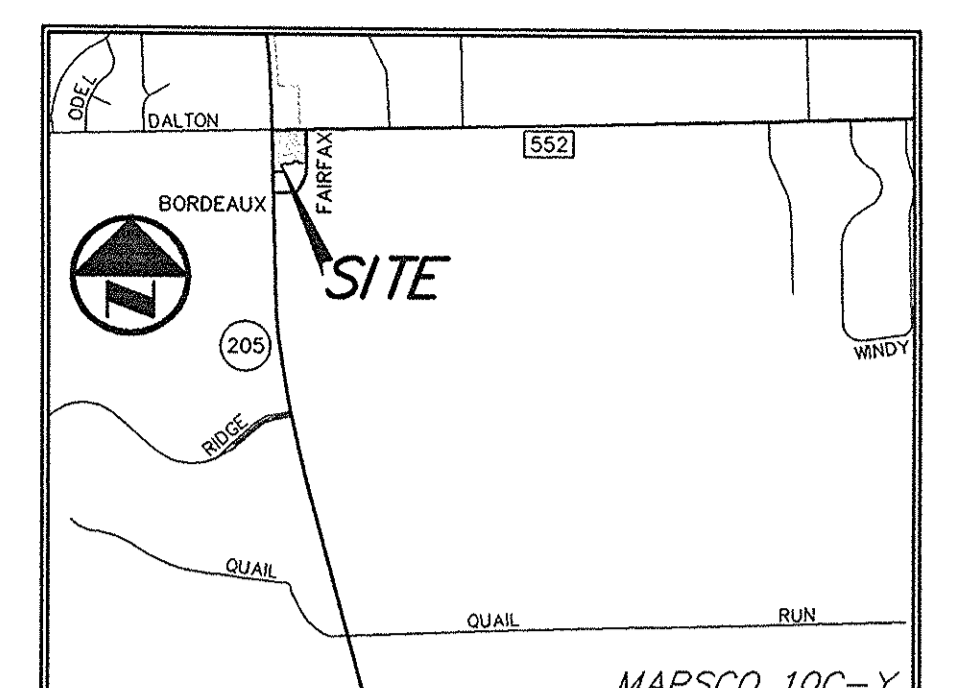
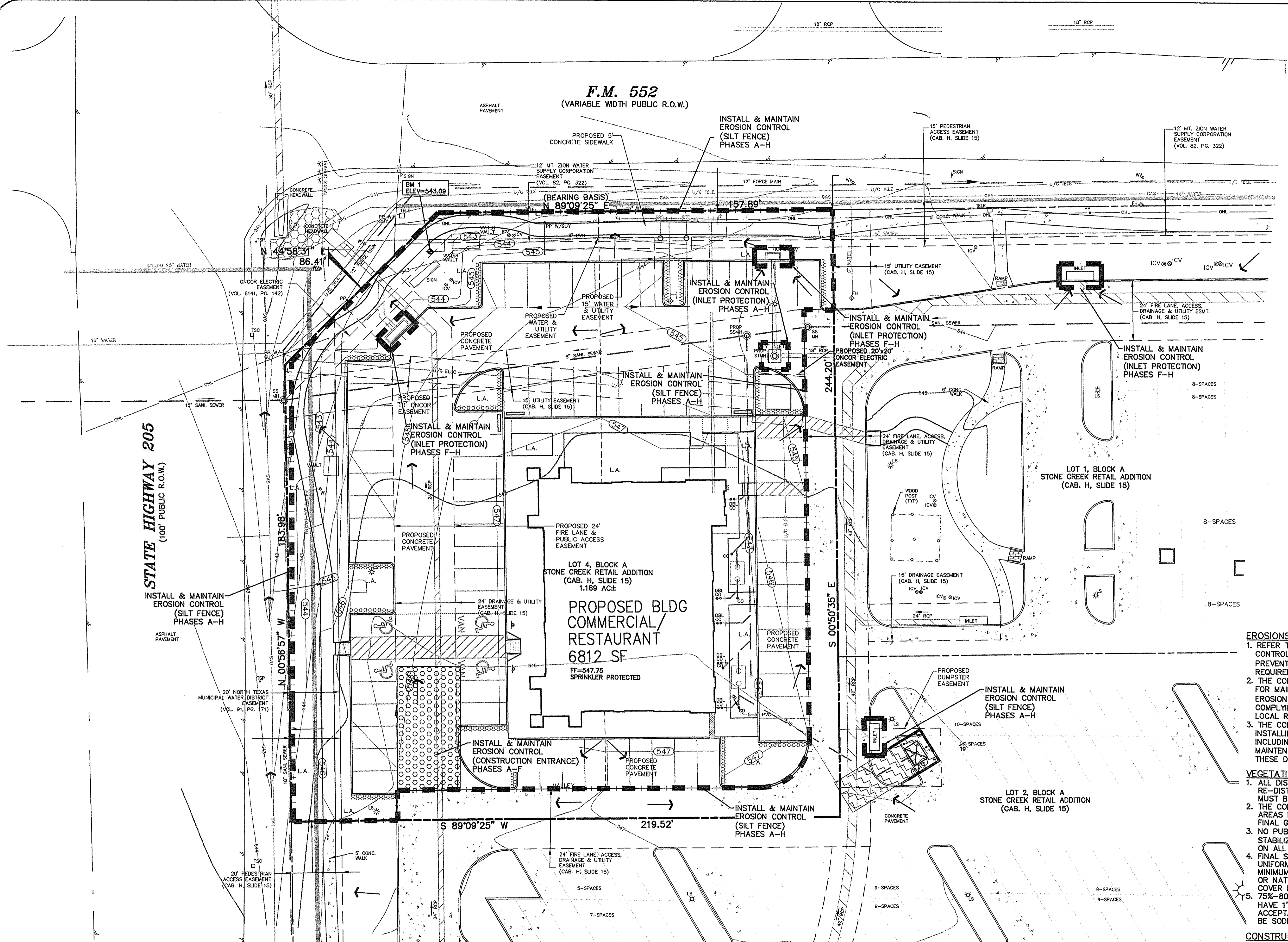


10/10/2013 3:05PM
 ROLLINS 1300-1399-1399-1399-12-073-EROSION CONTROL (SWPPP).DWG
 N:\005\1300-1399-1399-1399-12-073-EROSION CONTROL (SWPPP).DWG
 © POGUE ENGINEERING & DEVELOPMENT COMPANY, INC. 2013. ALL RIGHTS RESERVED. THE ENGINEERING DESIGN, DETAIL, AND INVENTION ARE THE PROPERTY OF POGUE ENGINEERING & DEVELOPMENT COMPANY, INC. THEIR USE FOR REPRODUCTION, CONSTRUCTION, OR DISTRIBUTION IS PROHIBITED UNLESS AUTHORIZED IN WRITING BY POGUE ENGINEERING & DEVELOPMENT COMPANY, INC.

STONE CREEK RETAIL ADDITION



LEGEND

B	BOLLARD
EM	ELECTRIC METER
PP	POWER POLE
LS	LIGHT STANDARD
WM	WATER METER
WV	WATER VALVE
ICV	IRRIGATION CONTROL VALVE
FH	FIRE HYDRANT
FDC	FIRE DEPARTMENT CONNECTION
CO	CLEAN OUT
MH	MANHOLE
GM	GAS METER
TSC	TRAFFIC SIGNAL CONTROL
TSP	TRAFFIC SIGNAL POLE
SD	TRAFFIC SIGN
TELE	TELEPHONE BOX
TV	TV BOX
FP	FLAG POLE
---	PROPERTY LINE
O.H.	O.H. POWER LINES
U/G TELE	U/G TELEPHONE LINES
WATER	U/G WATER LINE
GAS	U/G GAS LINE
---	FENCE
---	EXISTING CONTOURS
---	PROPOSED CONTOURS
---	PROPOSED EROSION CONTROL

EROSIONS CONTROL GENERAL NOTES:
 1. REFER TO SHEET C4.02 FOR THE EROSION CONTROL DETAILS AND POLLUTION PREVENTION PLAN NOTES/SPECIFICATIONS/REQUIREMENTS.
 2. THE CONTRACTOR SHALL BE RESPONSIBLE FOR MAINTAINING ALL MEASURES OF THIS EROSION CONTROL PLAN (SWPPP) AND COMPLYING WITH ALL FEDERAL, STATE AND LOCAL REQUIREMENTS REGARDING THE SWPPP.
 3. THE CONTRACTOR SHALL BE RESPONSIBLE FOR INSTALLING AND MAINTAINING THESE MEASURES INCLUDING WATERING, MOWING AND GENERAL MAINTENANCE UNLESS OTHERWISE RELIEVED OF THESE DUTIES BY THE OWNER.

VEGETATION NOTES:
 1. ALL DISTURBED AREAS NOT BEING RE-DISTURBED WITHIN A MINIMUM OF 14 DAYS MUST BE COVERED AND STABILIZED.
 2. THE CONTRACTOR SHALL SEED ALL DISTURBED AREAS IMMEDIATELY UPON COMPLETION OF FINAL GRADING.
 3. NO PUBLIC ACCEPTANCE UNTIL (FINAL STABILIZATION) VEGETATION IS ESTABLISHED ON ALL DISTURBED AREAS.
 4. FINAL STABILIZATION IS DEFINED AS A UNIFORM PERENNIAL VEGETATIVE COVER AT A MINIMUM OF 70% RESTORATION OF THE NATIVE OR NATURAL PREEXISTING BACKGROUND COVER FOR THE AREA.
 5. 75%-80% OF ALL DISTURBED AREAS ARE TO HAVE 1" TALL GRASS PRIOR TO ENGINEERING ACCEPTANCE. ALL RIGHT-OF-WAY AREA TO BE SODDED.

CONSTRUCTION ACTIVITIES:
 THE CONSTRUCTION ACTIVITY INCLUDED IN THIS PLAN WILL INCLUDE THE FOLLOWING CONSTRUCTION PHASES:
 A. CLEARING AND GRUBBING
 B. STOCK PILING
 C. ROUGH GRADING
 D. UTILITY INSTALLATION/EXCAVATION OF TRENCHES
 E. FINAL OR FINISH GRADING
 F. PAVEMENT INSTALLATION
 G. BUILDING CONSTRUCTION
 H. PREPARATION OF SEEDING AND PLANTING

ALL RESPONSIBILITY FOR ADEQUACY OF DESIGN REMAINS WITH THE DESIGN ENGINEER. THE CITY OF ROCKWALL, IN REVIEWING AND RELEASING PLANS FOR CONSTRUCTION, ASSUMES NO RESPONSIBILITY FOR ADEQUACY OR ACCURACY OF DESIGN.

CAUTION!!!
 UNDERGROUND UTILITIES ARE LOCATED IN THIS AREA. 48 HOURS PRIOR TO ANY CONSTRUCTION ACTIVITIES, CONTACT THE LOCATES FOR FRANCHISE UTILITY INFO. CALL BEFORE YOU DIG!
 TEXAS EXCAVATION SAFETY SYSTEM (TESS)
 1-800-344-8377
 TEXAS ONE CALL SYSTEMS
 1-800-245-4545
 LONE STAR NOTIFICATION CENTER
 1-800-669-8344 EXT. 5

BENCHMARK LIST:
 BENCHMARK #1
 SQUARE CUT FOUND AT SOUTHWEST CORNER OF WATER VAULT LOCATED AT THE SOUTHEAST CORNER OF THE INTERSECTION OF THE EAST RIGHT-OF-WAY LINE OF SH 205 AND THE SOUTH RIGHT-OF-WAY LINE OF FM 552.
 ELEVATION = 443.09
 BENCHMARK #2
 CITY OF ROCKWALL MONUMENT (R010) FOUND.
 ELEVATION = 524.788

FRANCHISE UTILITY NOTES:
 1. TXU ENERGY CONSTRUCTION SERVICES - (800) 711-9112
 2. ATMOS ENERGY (GAS) - 903-457-2092 - DINAH WOOD
 3. AT&T (PHONE) - 903-457-2092 - DWAYNE WELLS

RECORD DRAWINGS:
 IT WAS THE INTENT THAT THE IMPROVEMENTS SHOWN BE CONSTRUCTED ACCORDING TO THESE PLANS AS APPROVED BY THE CITY. THE LINES AND GRADES WERE SET ON THE GROUND FOR CONSTRUCTION ACCORDING TO SAID PLANS. THE CITY INSPECTED THE CONSTRUCTION. WE ARE NOT AWARE OF ANY CHANGES OR REVISIONS TO THESE PLANS DURING CONSTRUCTION OTHER THAN THOSE SHOWN. DATE: OCTOBER 10, 2013

NO.	DATE	DESCRIPTION	PI NUMBER
2	10-10-13	RECORD DRAWINGS	
1	5-9-13	REVISED ROOF DRAINAGE DESIGN	

PROJECT INFORMATION
 STONE CREEK RETAIL ADDITION
 BLOCK A, LOT 4, STONE CREEK RETAIL ADDITION
 CITY OF ROCKWALL, TEXAS
 W.T. DEWEESE SURVEY, ABSTRACT NO. 71
 PROPOSED USE: RETAIL
 ZONING: PD-70

OWNER/DEVELOPER
 METROPLEX ACQUISITION FUND, L.P.
 15150 PRESTON ROAD, SUITE 210
 DALLAS, TEXAS 75248
 MR. GREY STOGNER
 (214) 343-4477 PHONE
 (214) 340-2029 FAX

THE SEAL APPEARING ON THIS DOCUMENT WAS AUTHORIZED BY RANDALL P. POGUE, PE 84780 ON 09-09-2013. ALTERATION OF A SEALED DOCUMENT WITHOUT PROPER NOTIFICATION TO THE RESPONSIBLE ENGINEER IS AN OFFENSE UNDER THE TEXAS ENGINEERING PRACTICE ACT.



POGUE
 ENGINEERING & DEVELOPMENT COMPANY, INC.
 1512 BRAY CENTRAL DRIVE
 SUITE 100
 MCKINNEY, TEXAS 75069
 TX BOARD PROF. ENGINEERS, CERT. #1-00048; TX BOARD PROF. LAND SURVEYING, CERT. 100421-00
 (214) 544-8880 PHONE
 (214) 544-8882 FAX
 www.PogueEngineering.com

EROSION CONTROL PLAN (SWPPP)
 STONE CREEK RETAIL ADDITION
 BLK A, LOT 4, STONE CREEK RETAIL ADD'N
 W.T. DEWEESE SURVEY, ABSTRACT NO. 71
 CITY OF ROCKWALL, TEXAS

SHEET NO. C4.01