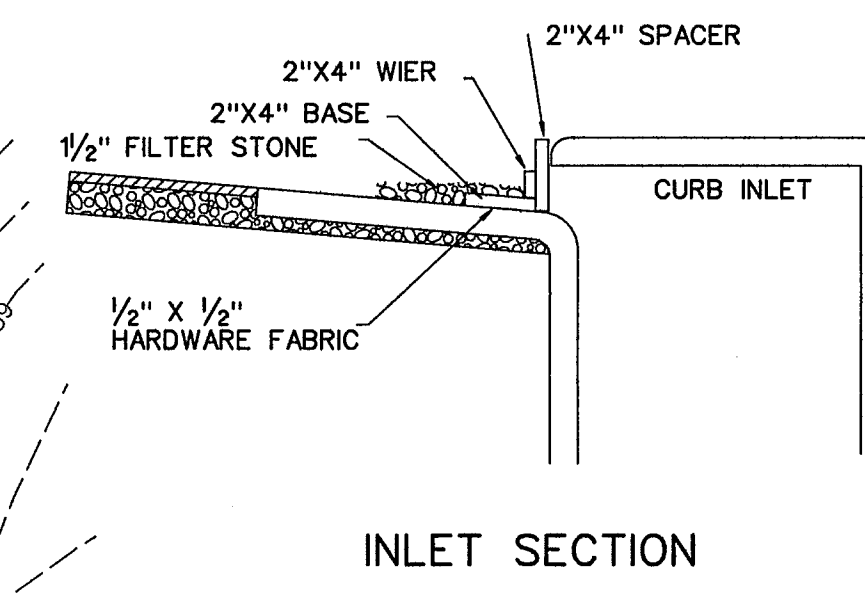
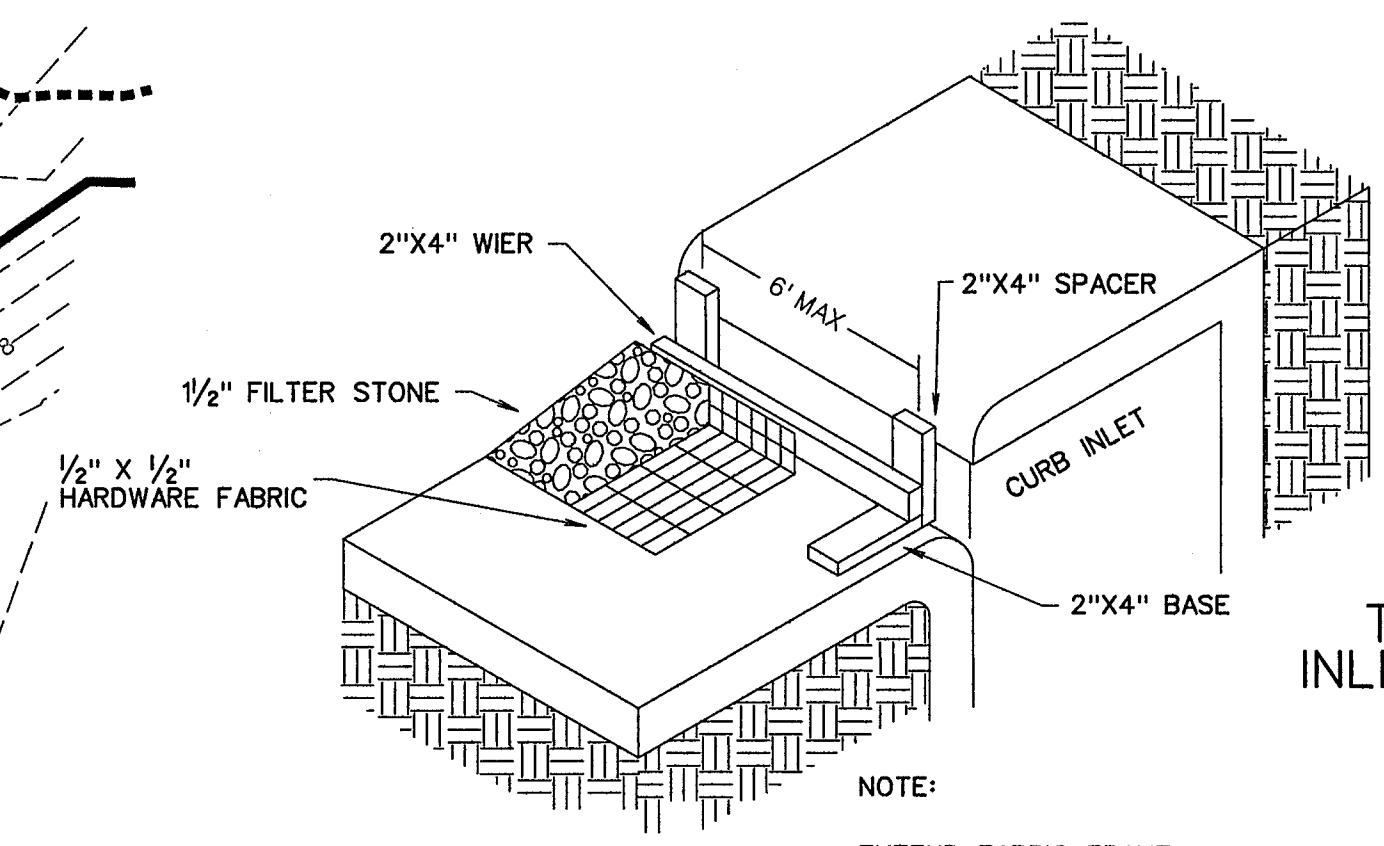


CONSTRUCTION SEQUENCE

1. GRADING CONTRACTOR TO INSTALL TEMPORARY STABILIZED ENTRANCE.
2. INSTALL SILT FENCE AS SHOWN, (TS-600 POLY FELT) PER C.O.G. SPECIFICATIONS.
3. CONSTRUCT DETENTION POND AND OUTFALL STRUCTURE.
4. PERFORM GRADING AND UTILITY CONSTRUCTION.
5. AFTER THE INLET BOTTOMS ARE CONSTRUCTED, THE INLETS SHALL BE FILLED WITH STONE AND COVERED WITH A FILTER FABRIC (TS-600 POLY FELT OR EQUIVALENT) BY UTILITY CONTRACTOR.
6. PRIOR TO CITY RELEASING DIRT WORK, PAVING, SOD OR SEEDED CURLEX SHALL BE INSTALLED ON SIDES AND BOTTOM OF ALL DETENTION PONDS AND DETENTION FULLY FUNCTIONING.
7. AFTER PAVING AND COMPLETION OF INLETS, INLET FILTERS SHALL BE INSTALLED IN ALL INLETS AND MAINTAINED UNTIL RE-VEGETATION HAS BEEN COMPLETED BY PAVING CONTRACTOR.
8. SILT FENCE SHALL REMAIN IN PLACE UNTIL RE-VEGETATION HAS BEEN COMPLETED.
9. PAVING CONTRACTOR SHALL REMOVE TEMPORARY STABILIZED ENTRANCE.
10. PRIOR TO CITY ACCEPTANCE THE PAVING CONTRACTOR SHALL BE RESPONSIBLE FOR REMOVING ANY MUD OR SILT WHICH COLLECTS ON THE EXISTING AND NEW PAVEMENT.



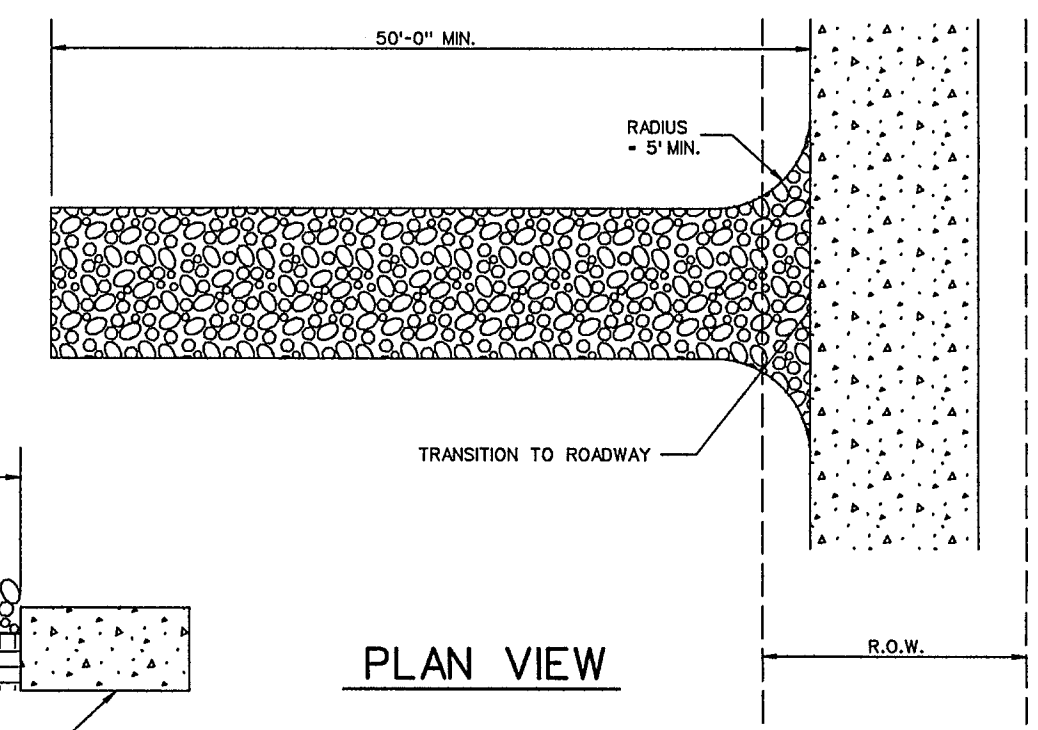
INLET SECTION



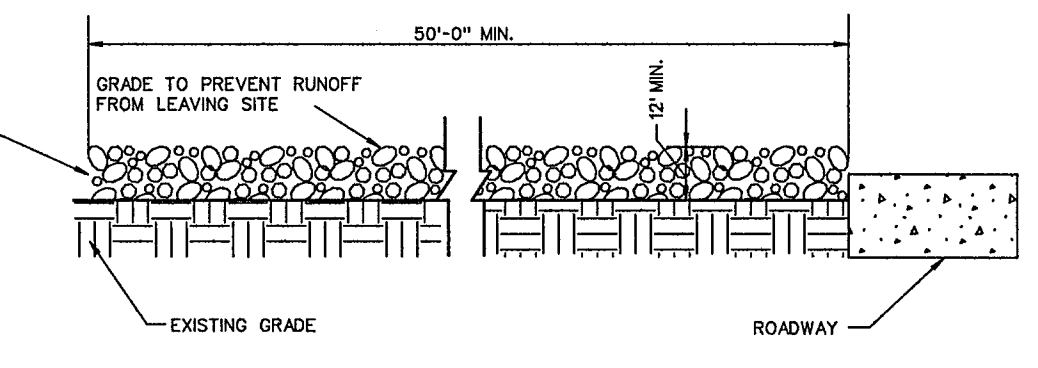
TYPE B CURB INLET PROTECTION

NOTE:

EXTEND FABRIC, FRAME AND FILTER STONE 12' BEYOND END OF INLET ON BOTH ENDS.



PLAN VIEW

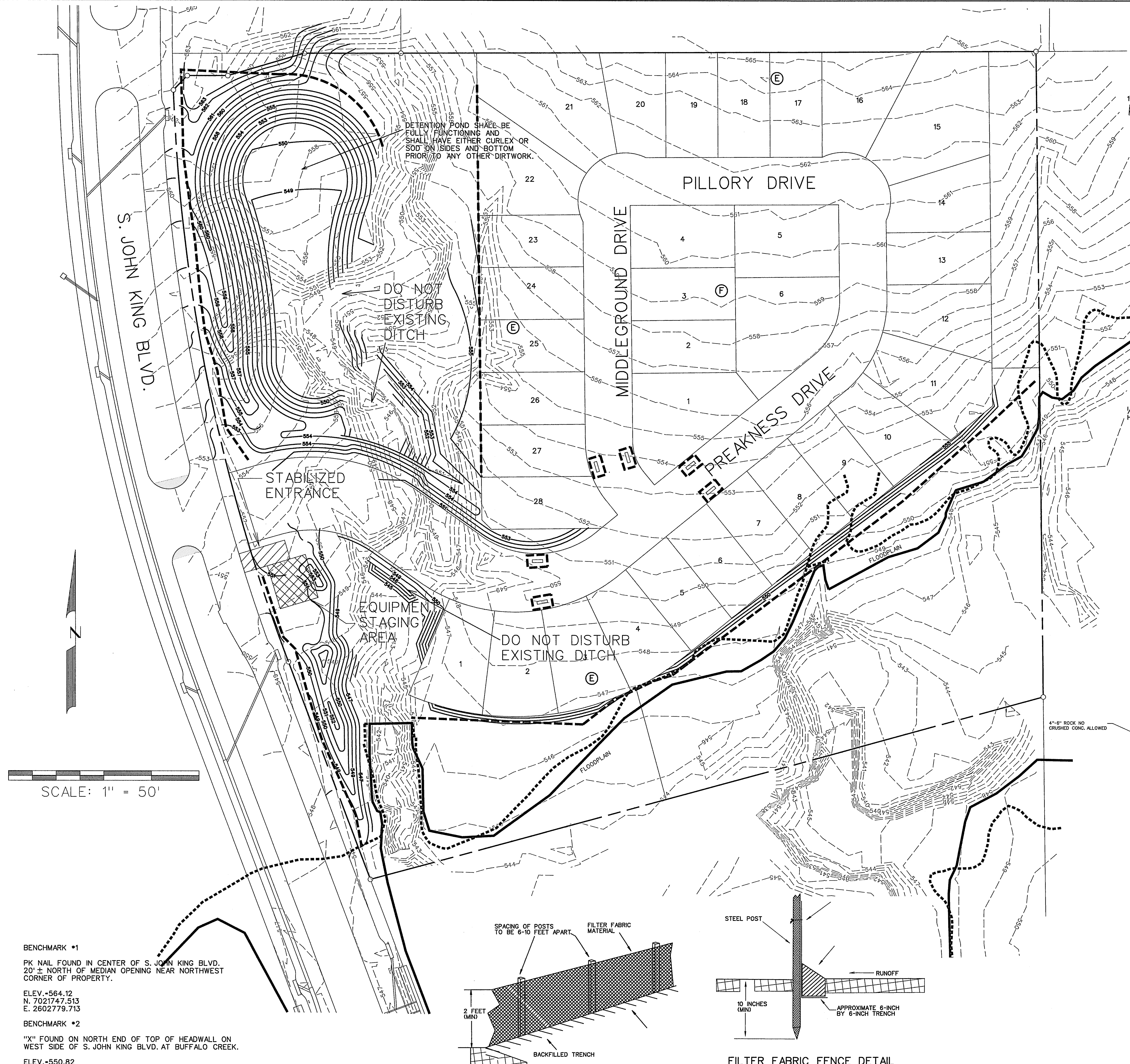


PROFILE

STABILIZED ENTRANCE DETAIL

LEGEND

- SILT FENCE (BEFORE CONSTRUCTION) - - - - -
- INLET PROTECTION [Symbol]



DETENTION POND SHALL BE FULLY FUNCTIONING AND SHALL HAVE EITHER CURLEX OR SOD ON SIDES AND BOTTOM PRIOR TO ANY OTHER DIRTWORK.

DO NOT DISTURB EXISTING DITCH

STABILIZED ENTRANCE

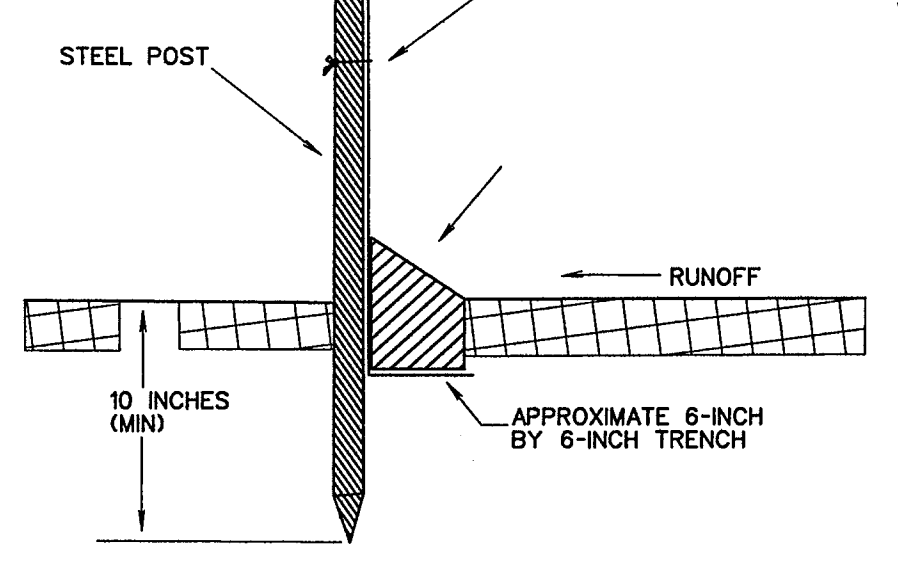
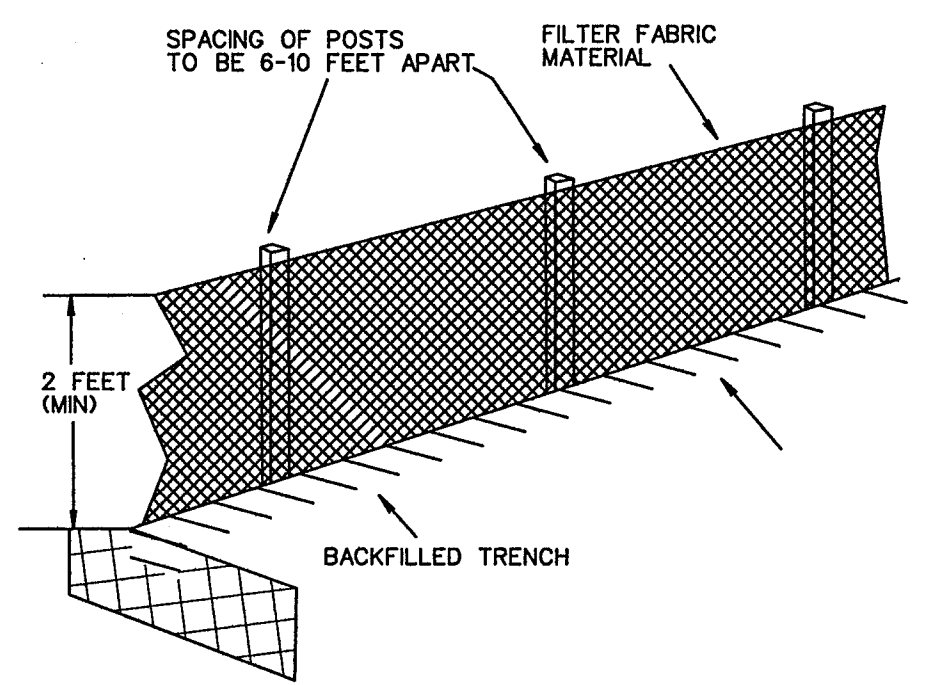
EQUIPMENT STAGING AREA

DO NOT DISTURB EXISTING DITCH

SCALE: 1" = 50'

BENCHMARK #1
PK NAIL FOUND IN CENTER OF S. JOHN KING BLVD. 20' ± NORTH OF MEDIAN OPENING NEAR NORTHWEST CORNER OF PROPERTY.
ELEV. -564.12
N. 7021747.513
E. 2602779.713

BENCHMARK #2
"X" FOUND ON NORTH END OF TOP OF HEADWALL ON WEST SIDE OF S. JOHN KING BLVD. AT BUFFALO CREEK.
ELEV. -550.82
N. 7020725.306
E. 2602982.310



FILTER FABRIC FENCE DETAIL

AS-BUILT JULY 2015
INFORMATION PROVIDED BY CONTRACTORS (NOT FIELD VERIFIED)

CORWIN ENGINEERING, INC.
200 W. BELMONT, SUITE E
ALLEN, TEXAS 75013 (972)396-1200
TBPE FIRM #5951

**DEVELOPMENT PLANS FOR
ROCKWALL DOWNES
PHASE 1
ROCKWALL, TEXAS**

EROSION CONTROL PLAN

DRAWN BY	DESIGNED BY	CHECKED BY	SHEET NO.
JOB NUMBER	DATE	SCALE:	17 OF 17
14046	JANUARY 2015	1"=50'	