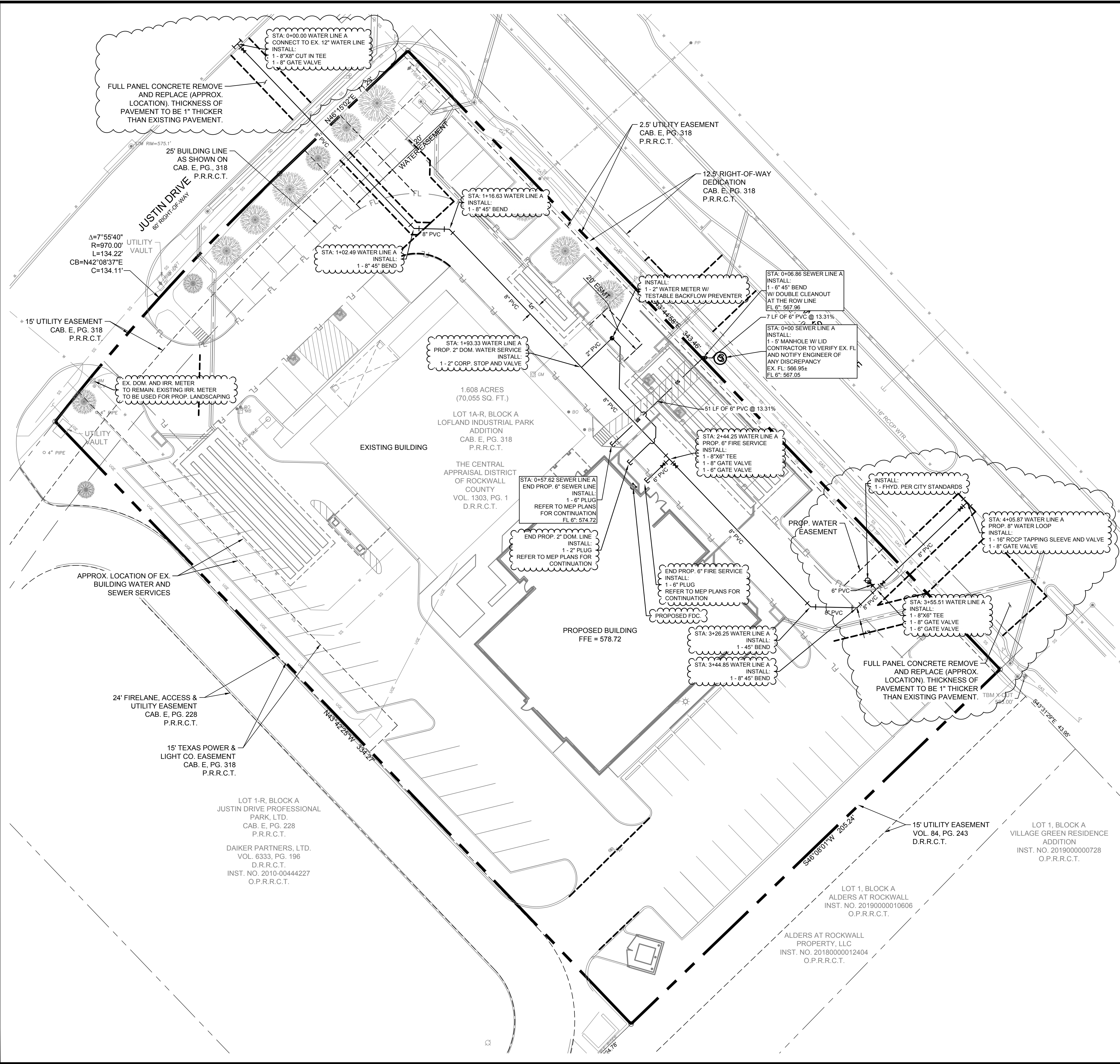
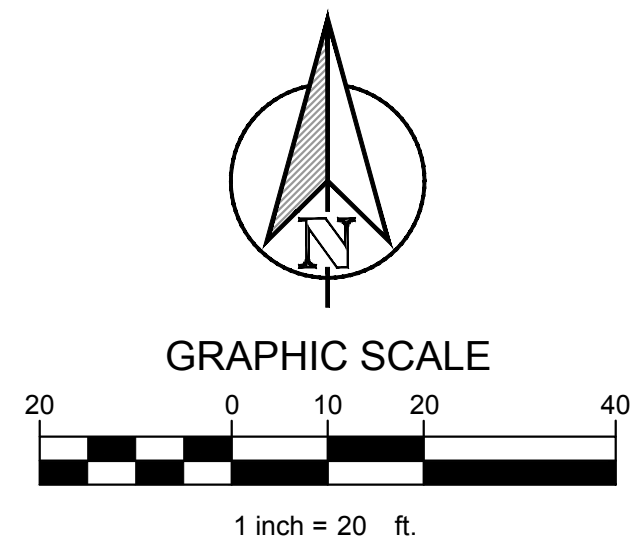


PLOTTED BY: CLAY CRISTY
 PLOT DATE: 7/29/2021 11:54 AM
 LOCATION: Z:\PROJECTS\2020\2020-136 ROCKWALL CADD\SHEETS\CIVIL PLANS\C-17 UTILITY PLAN.DWG
 LAST SAVED: 7/29/2021 11:36 AM



UTILITY LOCATION NOTE:
 THE LOCATION OF EXISTING UTILITIES SHOWN ON THESE PLANS ARE APPROXIMATE AND BASED ON EXISTING PLANS AND DATA FURNISHED BY UTILITY COMPANIES. IT IS THE RESPONSIBILITY OF THE CONTRACTOR TO VERIFY THE LOCATION AND DEPTH OF ALL EXISTING UTILITIES THAT MAY CONFLICT WITH CONSTRUCTION. CALL 1-800-344-8377 TWO WORKING DAYS PRIOR TO CONSTRUCTION FOR Q&A. LOCATIONS, ANY DAMAGE TO EXISTING UTILITIES SHALL BE REPAIRED AT CONTRACTORS EXPENSE, AT NO ADDITIONAL COST.



LEGEND	
	EXISTING FIRE HYDRANT ASSEMBLY
	PROPOSED FIRE HYDRANT ASSEMBLY
	EXISTING WATER MAIN
	PROPOSED WATER LINE AND GATE VALVE
	EXISTING SANITARY SEWER AND MANHOLE
	PROPOSED SANITARY SEWER LINE

- NOTES:**
- CONTRACTOR SHALL COORDINATE WITH FRANCHISE UTILITY COMPANIES AND IRRIGATION PLANS TO DETERMINE QUANTITY, SIZE, AND LOCATION FOR ALL CONDUIT AND SLEEVING REQUIRED TO SERVE BUILDING AND SITE. ALL CONDUIT AND SLEEVES SHALL BE INSTALLED PRIOR TO SUBGRADE PREPARATION AND PAVING.
- FRANCHISE UTILITY NOTES:**
- THE GAS, ELECTRIC AND TELEPHONE INFORMATION SHOWN ON THIS PLAN IS BASED UPON THE LATEST INFORMATION AVAILABLE FROM THE RESPECTIVE FRANCHISE UTILITY COMPANIES. IT IS INTENDED FOR PURPOSES OF GENERAL BIDDING AND BASIC CLARITY. SPECIFIC JOB SITE CONDITIONS SHALL BE FIELD VERIFIED PER NOTES 2 THROUGH 4 BELOW. THE FRANCHISE UTILITY CONTRACTOR ASSUMES ALL RESPONSIBILITY FOR SAID FIELD CONDITIONS AND ASSOCIATED REVISIONS REQUIRED BY THE RESPECTIVE UTILITY COMPANIES INVOLVED.
 - THE FRANCHISE UTILITY CONTRACTOR SHALL CONTACT THE RESPECTIVE FRANCHISE UTILITY COMPANIES, VERIFY ALL REQUIREMENTS AND EQUIPMENT, AND FURNISH AND INSTALL, INCLUDING BUT NOT LIMITED TO, ALL METERS, TRANSFORMERS, CONDUIT, CONCRETE PADS, TRENCHING, AND BACKFILL NECESSARY FOR PROPER INSTALLATION. FRANCHISE UTILITY CONTRACTOR SHALL ALSO PAY ALL FEES AND CHARGES INCURRED AND COORDINATE WITH OTHER FRANCHISE UTILITY COMPANIES.
 - THE FRANCHISE UTILITY CONTRACTOR SHALL FIELD VERIFY, IN THE PRESENCE OF THE RESPECTIVE UTILITY COMPANY REPRESENTATIVES, THE LOCATION OF ALL EXISTING AND PROPOSED UTILITY SERVICES AND EQUIPMENT. THE FRANCHISE UTILITY CONTRACTOR SHALL INCLUDE IN HIS BID SUFFICIENT FUNDS TO COVER ALL COSTS REQUIRED BY UTILITY COMPANIES TO PROVIDE NEW SERVICES AND/OR UPGRADE EXISTING SERVICES. NO ALLOWANCES WILL BE MADE FOR FRANCHISE UTILITY CONTRACTOR'S UNFAMILIARITY WITH THE EXISTING CONDITION, REQUIREMENTS OF THE NEW CONDITIONS, AND/OR FAILURE TO COORDINATE INSTALLATION.
 - CONTRACTOR SHALL VERIFY THAT METER AND TRANSFORMER LOCATIONS SHOWN MEET DESIGN CRITERIA BY FRANCHISE UTILITY COMPANIES FOR, BUT NOT LIMITED TO, THE OFFSET DISTANCE FROM FACE OF BUILDING.

TBM #1 - ELEV. 563.00
 18" X 18" CUT SET ON CONCRETE CURB INLET LOCATED WITHIN T.L. TOWNSEND DRIVE (VARIABLE WIDTH) RIGHT-OF-WAY, APPROXIMATELY 3' EAST AND 0' SOUTH FROM A SANITARY SEWER MANHOLE LOCATED NEAR THE EASTERNMOST CORNER OF THE SUBJECT PROPERTY.
 TBM #2 - ELEV. 575.63
 18" X 18" CUT SET ON CONCRETE LOCATED WITHIN JUSTIN DRIVE (60 FOOT PUBLIC RIGHT-OF-WAY), LOCATED APPROXIMATELY 143' WEST AND 96' SOUTH OF A STORM SEWER MANHOLE LOCATED ON A CONCRETE CURB INLET ALONG THE SOUTHEAST SIDE OF SAID JUSTIN ROAD.

TEXAS FIRM #141199
CLAY MOORE ENGINEERING
 1903 CENTRAL DR. SUITE #405
 ROCKWALL, TX 75087
 PHONE 972.982.0072
 WWW.CLAYMOOREENGINEERING.COM

STATE OF TEXAS
 CLAY CRISTY
 100800
 PROFESSIONAL ENGINEER
 1/19/2021

ROCKWALL CAD
814 JUSTIN ROAD
ROCKWALL, TX 75087

No.	DATE	REVISION	BY

UTILITY PLAN
SHEET C-17

DESIGN: CWP
 DRAWN: CWP/SD
 CHECKED: CLC
 DATE: 9/7/2021

ALL RESPONSIBILITY FOR ADEQUACY OF DESIGN REMAINS WITH THE DESIGN ENGINEER. THE CITY OF ROCKWALL, IN REVIEWING AND RELEASING PLANS FOR CONSTRUCTION, ASSUMES NO RESPONSIBILITY FOR ADEQUACY OR ACCURACY OF DESIGN.

File No: 2020-136