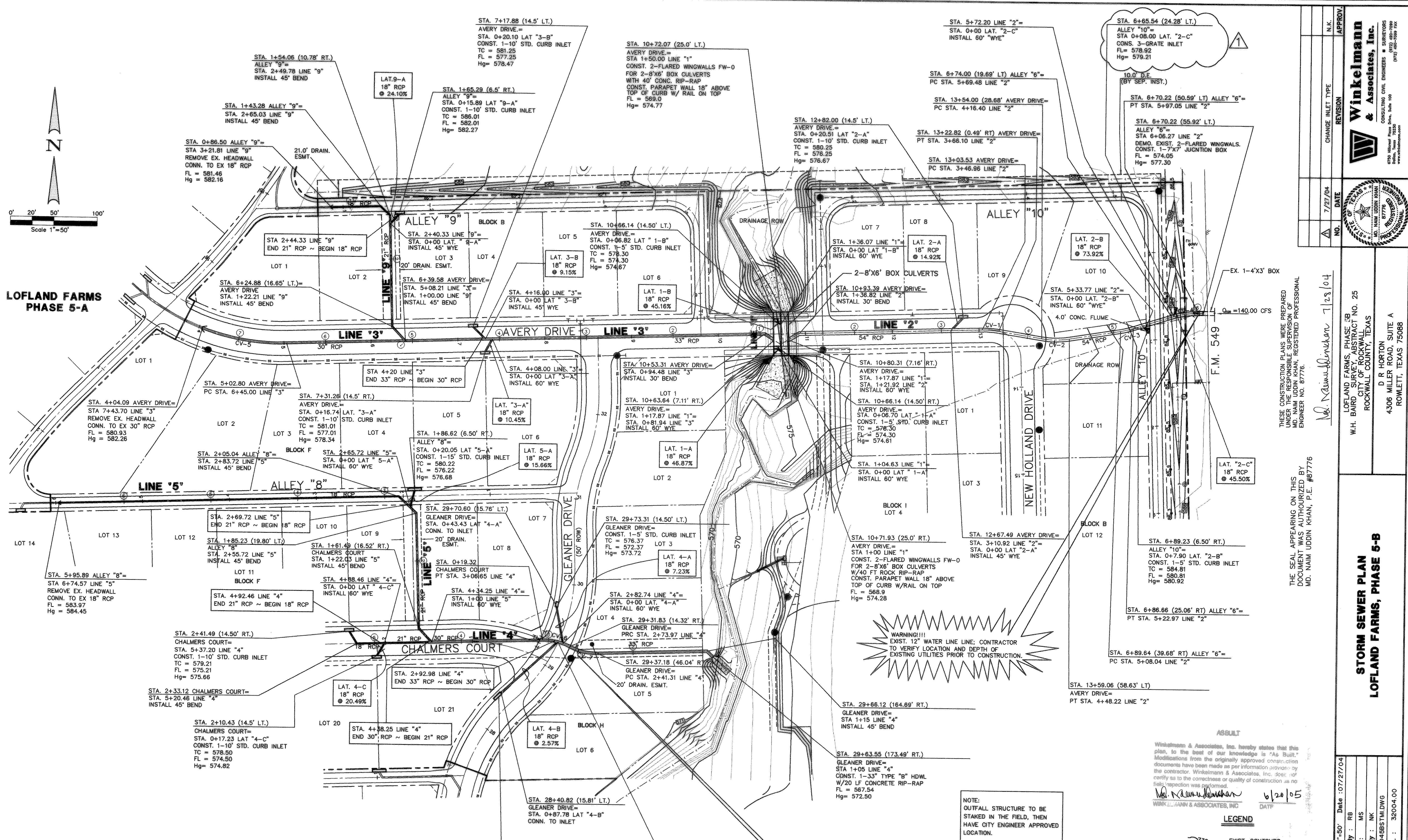


**LOFLAND FARMS
PHASE 5-A**



STORM SEWER CURVE TABLE

CURVE	RADIUS	DELTA	TANGENT	LENGTH	CHORD	BEARING
CV-1	100.00'	10°57'59"	9.60'	19.14'	19.11'	S86°17'19"E
CV-2	100.00'	18°13'49"	16.04'	31.82'	31.88'	S89°55'14"E
CV-3	100.00'	08°33'14"	7.46'	14.93'	14.92'	N78°41'15"E
CV-4	100.00'	15°47'52"	13.87'	27.49'	27.49'	N80°18'34"E
CV-5	250.00'	22°37'16"	50.00'	98.70'	98.06'	N80°27'41"W
CV-6	65.00'	28°48'41"	16.70'	32.69'	32.34'	S77°23'23"E
CV-7	65.00'	28°47'17"	16.68'	32.66'	32.32'	S77°22'41"E

BENCHMARK: ELEV. = 600.69
CITY OF ROCKWALL R-19
BRASS MONUMENT AT THE N/W CORNER OF
SILVERVIEW & DIAMOND WAY, 500' ± SOUTH OF
S.H. 276.

BENCHMARK: ELEV. = 583.56
R.R. SPIKE SET IN THE CENTERLINE OF S.H. 276
3600± WEST OF F.M. 549

NOTE:
OUTFALL STRUCTURE TO BE
STAKED IN THE FIELD, THEN
HAVE CITY ENGINEER APPROVED
LOCATION.

WARNING!!!
EXIST. SANITARY SEWER LINE; CONTRACTOR
TO VERIFY LOCATION AND DEPTH OF
EXISTING UTILITIES PRIOR TO CONSTRUCTION.

WARNING!!!
EXIST. 12" WATER LINE; CONTRACTOR
TO VERIFY LOCATION AND DEPTH OF
EXISTING UTILITIES PRIOR TO CONSTRUCTION.

ABSOLUTE

Winkelmann & Associates, Inc. hereby states that this plan, to the best of our knowledge is "As Built." Modifications from the originally approved construction documents have been made as per information provided by the contractor. Winkelmann & Associates, Inc. does not certify as to the correctness or quality of construction as no field inspection was performed.

W. Winkelmann 6/20/05
WINKELMANN & ASSOCIATES, INC. DATE

- LEGEND**
- 730 EXIST. CONTOURS
 - 724 PROP. CONTOURS
 - S.S. SANITARY SEWER
 - Q100 100-YR FLOW
 - TC TOP OF CURB
 - FL FLOW LINE
 - EW END OF WALL
 - 89°0 EXIST. SPOT ELEVATION
 - FLOW ARROW
 - ⊙ STORM STATION

APPROV.			
REVISION			
CHANGE INLET TYPE			
NO.	DATE		
1	7/27/04		

Winkelmann & Associates, Inc.
CONSULTING CIVIL ENGINEERS & SURVEYORS
6200 Miller Plaza Drive, Suite 100
Rockwall, Texas 75087
(972) 980-7999
www.winkelmann.com

STATE OF TEXAS
COUNTY OF ROCKWALL
REGISTERED PROFESSIONAL ENGINEER
NO. 11111
EXPIRES 12/31/05

THESE CONSTRUCTION PLANS WERE PREPARED UNDER THE RESPONSIBLE SUPERVISION OF
MD. NAIM UDDIN KHAN, REGISTERED PROFESSIONAL ENGINEER NO. 87776.

W. Winkelmann 7/28/04

LOFLAND FARMS, PHASE 5B
WH. BAIRD SURVEY, TRACT NO. 25
CITY OF ROCKWALL,
ROCKWALL COUNTY, TEXAS

D R HORTON
4306 MILLER ROAD, SUITE A
ROWLETT, TEXAS 75088

THE SEAL APPEARING ON THIS DOCUMENT WAS AUTHORIZED BY
MD. NAIM UDDIN KHAN, P.E. #87776

**STORM SEWER PLAN
LOFLAND FARMS, PHASE 5-B**

Scale: H. 1"=50' Date: 07/27/04

Designed By: RB
Drawn By: MS
Checked By: NK
File: 320045BSTM.DWG
Project No.: 32004.00

SHEET
13
OF
28