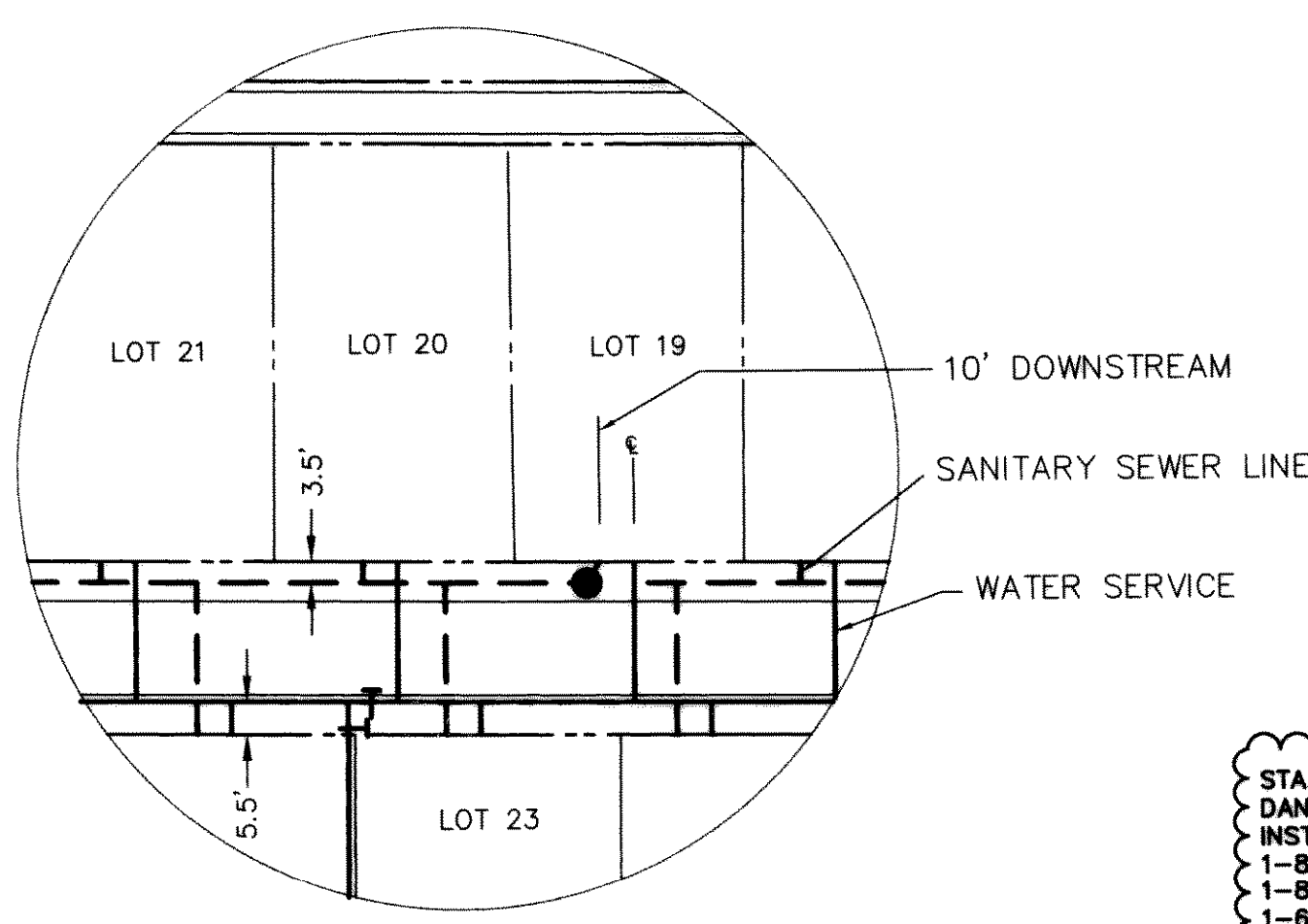


CURVE	RADIUS	DELTA	TANGENT	LENGTH	CHORD	BEARING
CW-1	1029.50'	20°01'25"	181.75'	359.78'	357.96'	N 08°12'59" E
CW-2	719.50'	20°01'25"	127.02'	251.44'	250.17'	N 08°12'59" E
CW-3	525.50'	20°01'25"	92.77'	183.65'	182.72'	N 08°12'59" E
CW-4	1025.50'	04°19'55"	38.78'	77.53'	77.51'	N 20°23'39" W
CW-5	230.50'	15°55'43"	32.25'	64.08'	63.87'	N 10°15'50" W
CW-6	230.50'	16°22'34"	33.17'	65.88'	65.66'	N 10°02'25" W

CURVE	RADIUS	DELTA	TANGENT	LENGTH	CHORD	BEARING
CS-1	271.50'	16°22'34"	39.07'	77.60'	77.34'	S 10°02'25" W
CS-2	988.50'	20°01'25"	174.51'	345.45'	343.70'	N 08°12'59" E
CS-3	271.50'	10°32'17"	25.04'	49.93'	49.87'	S 12°57'33" W
CS-4	678.50'	20°01'25"	119.78'	237.12'	235.91'	N 08°12'59" E
CS-5	200.00'	21°38'06"	38.22'	75.52'	75.07'	S 09°01'20" W



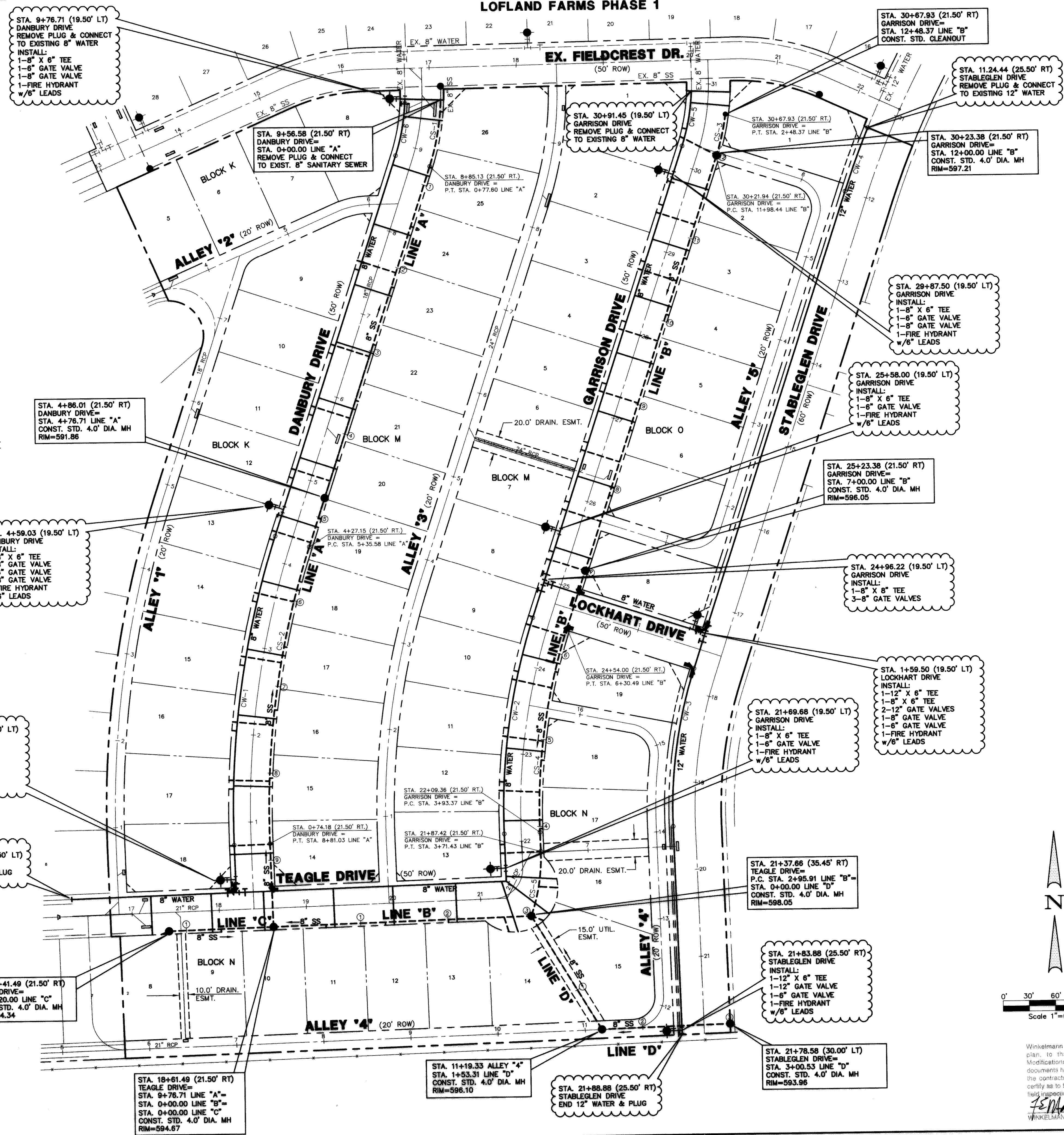
LOT SERVICES DETAIL
N.T.S.

- NOTE:**
1. WATER LINE LOCATED 5' BACK OF CURB.
 2. SANITARY SEWER LOCATED 7' BACK OF CURB.
 3. ALL SEWER SERVICES ARE 4".
 4. ALL WATER SERVICES ARE 1" POLYETHYLENE.
 5. ALL WATER AND SEWER LINE TO BE CLASS 200 C-900 DR 14 PVC.
 6. SEWER LINE:
A. COVER ABOVE THE PIPE > 10' USE SDR 26 PVC
B. COVER ABOVE THE PIPE < 10' USE SDR 35 PVC

TC	Top of Curb
P.T.	Point of Tangent
P.C.	Point of Curve
1	Street Station
⊕	Sanitary Station

BENCHMARK: ELEV. = 600.69
CITY OF ROCKWALL R-19
BRASS MONUMENT AT THE N/W CORNER OF
SILVERVIEW & DIAMOND WAY. 500' ± SOUTH OF
S.H. 276.

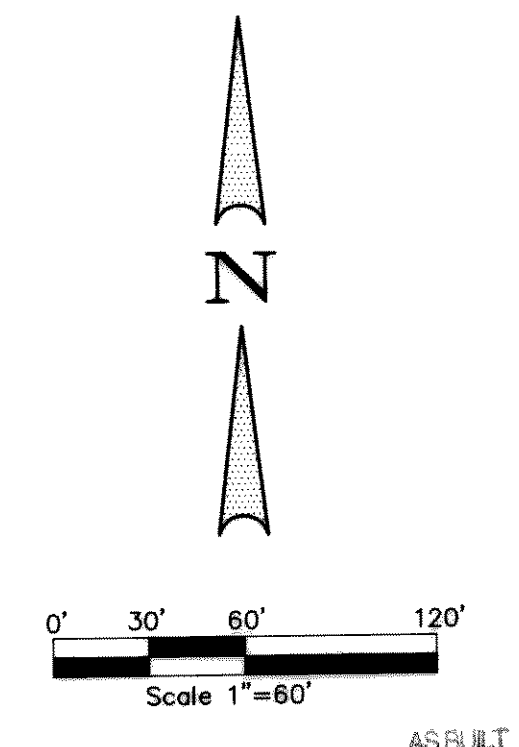
BENCHMARK: ELEV. = 583.56
R.R. SPIKE SET IN THE CENTERLINE OF S.H. 276
3600± WEST OF F.M. 549



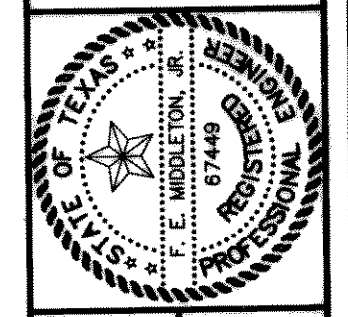
THESE CONSTRUCTION PLANS WERE PREPARED
UNDER THE CLOSE PERSONAL SUPERVISION OF
F.E. MIDDLETON, JR., REGISTERED PROFESSIONAL
ENGINEER NO. 67449

THE SEAL APPEARING ON THIS
DOCUMENT WAS AUTHORIZED BY
F.E. MIDDLETON, JR., P.E. #67449

F.E. Middleton 2-21-01



Winkelmann & Associates, Inc.
CONSULTING CIVIL ENGINEERS & SURVEYORS
6200 Wilford Road, Suite 100
Dallas, Texas 75236
(972) 482-7099 FAX
www.winkelmann.com



W.H. BARD SURVEY, ABSTRACT NO. 25
CITY OF ROCKWALL, TEXAS
ROCKWALL COUNTY, TEXAS
CONTINENTAL HOMES
621 WEST COLLEGE STREET
GRAPEVINE, TEXAS 76051

WATER & SANITARY SEWER PLAN
LOFLAND FARMS, PHASE 2

Scale:	1"=60'	Date:	2-21-01
Designed By:	DA	Drawn By:	DA
Checked By:	FEM	File:	3200W52.DWG
View:		Project No.:	32001.01

SHEET
14
OF
20

Winkelmann & Associates, Inc. hereby states that this plan, to the best of our knowledge is "As Built." Modifications from the originally approved construction documents have been made as per information provided by the contractor, Winkelmann & Associates, Inc. does not certify as to the correctness or quality of construction as no field inspection was performed.

F.E. Middleton 12-10-01
WINKELMANN & ASSOCIATES, INC. DATE