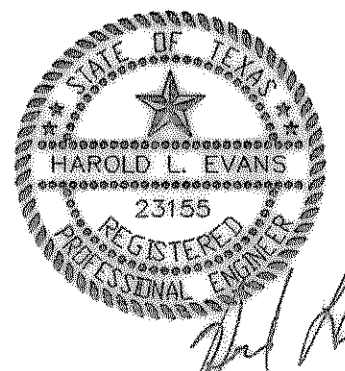
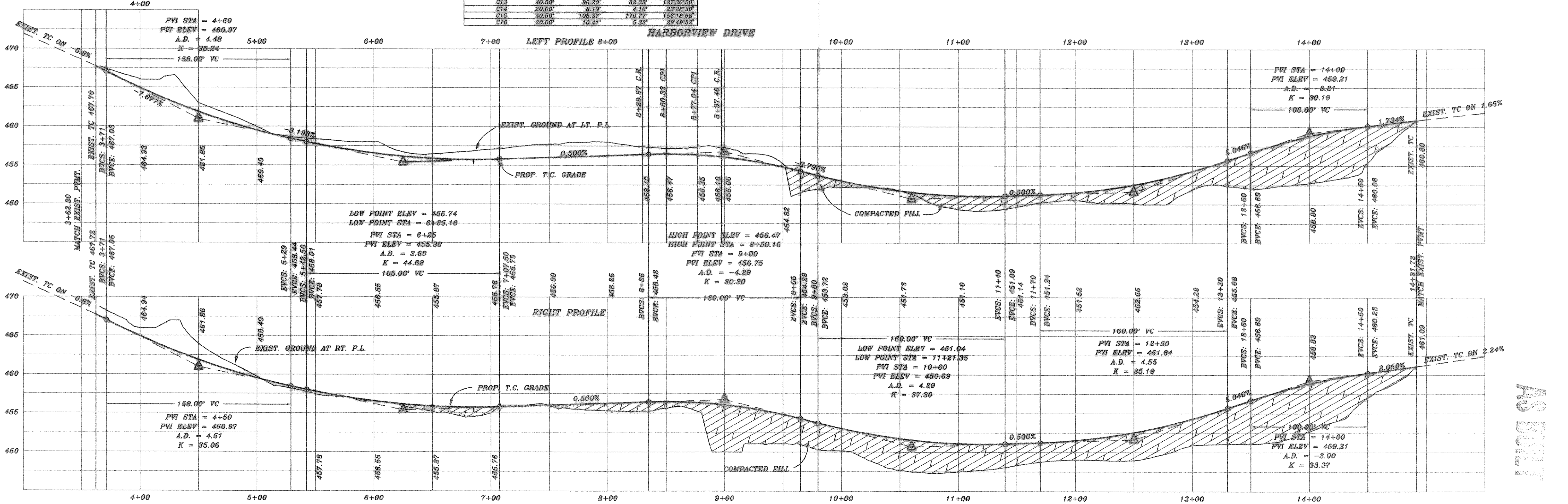
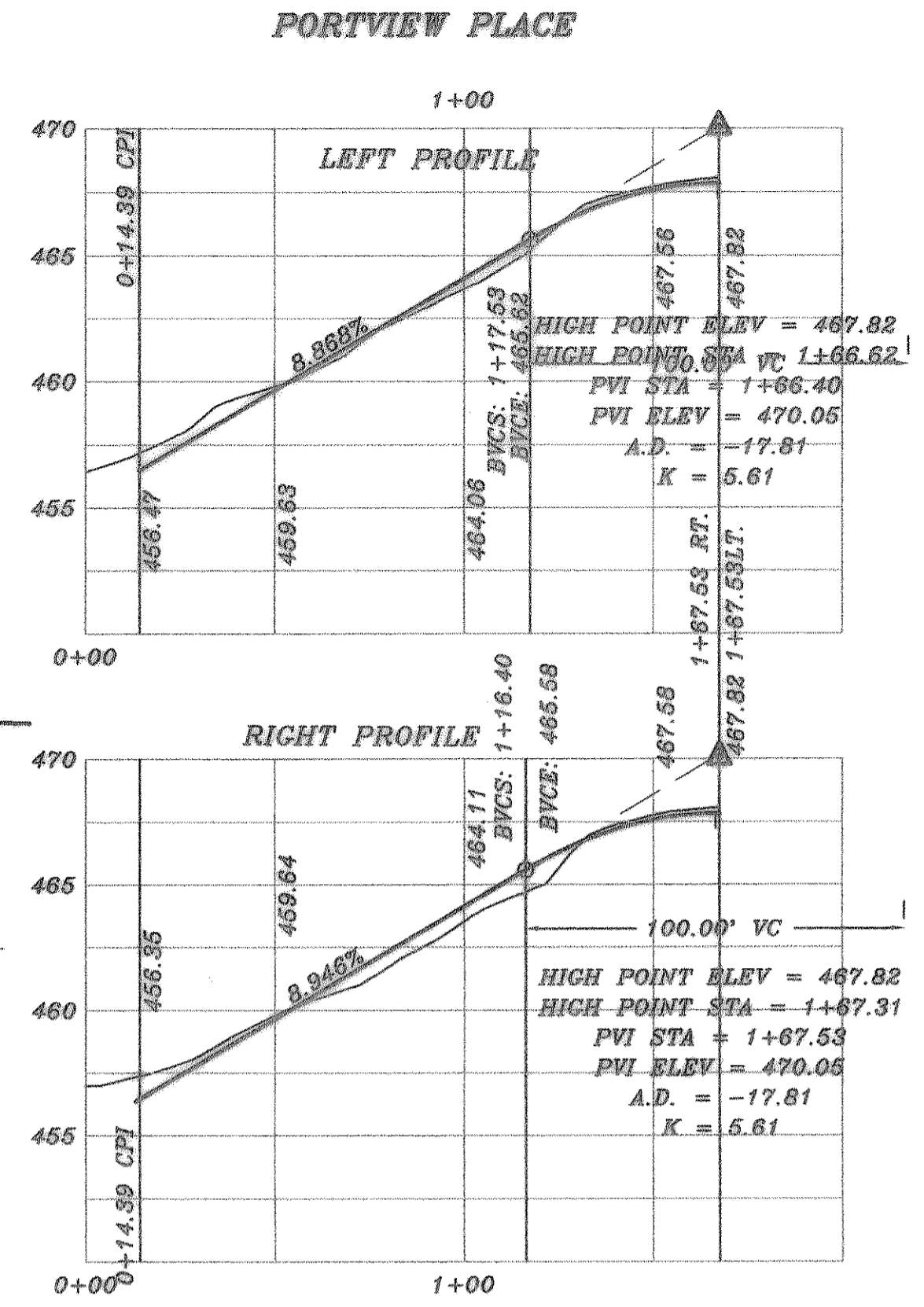
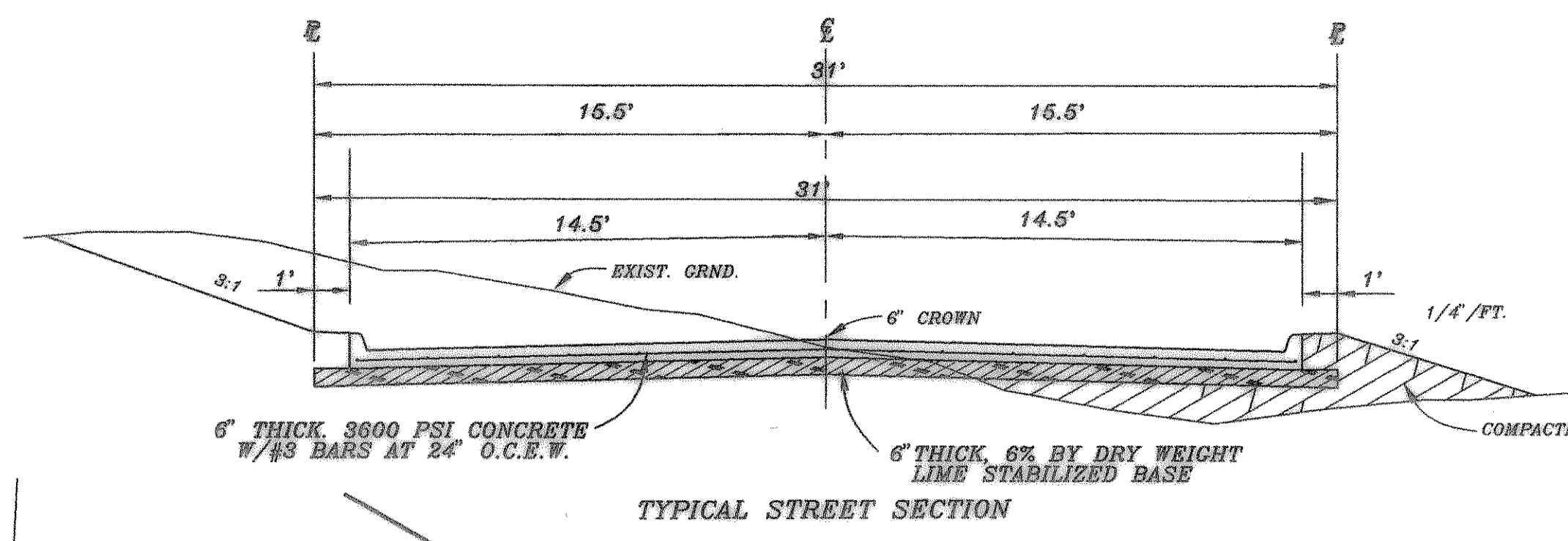


CURVE	RADIUS	LENGTH	TANGENT	DELTA
C1	34.50'	60.77'	41.79'	100°54'56"
C2	800.00'	210.76'	106.00'	15°05'41"
C3	150.00'	79.20'	40.54'	30°15'03"
C4	150.00'	42.98'	21.64'	16°24'57"
C5	34.50'	60.22'	41.13'	100°00'57"
C6	40.50'	110.38'	191.80'	156°09'14"
C7	20.00'	19.28'	10.46'	55°13'57"
C8	20.00'	34.95'	23.99'	100°07'55"
C9	20.00'	34.95'	23.99'	100°07'55"
C10	89.50'	39.14'	19.89'	25°03'14"
C11	89.50'	39.13'	19.88'	25°02'50"
C12	40.50'	90.20'	82.33'	127°36'50"
C13	40.50'	90.20'	82.33'	127°36'50"
C14	20.00'	8.19'	4.16'	23°23'30"
C15	40.50'	108.37'	170.77'	153°16'58"
C16	20.00'	10.41'	5.38'	29°49'32"



HAROLD L. EVANS
CONSULTING ENGINEER
P.O. BOX 28855
2391 GUS THOMASSON ROAD, SUITE 102
DALLAS, TEXAS 75228, (214) 326-8133

REV. PER CITY REVIEW 11/3/98

DATE 9/21/98 SCALE 1" = 40'
1" = 6'

DESIGN H.L.E. DRAWN

PROPOSED PAVING
HARBOR LANDING PHASE TWO

CITY OF ROCKWALL

SHEET NO. 4
JOB NO. 9873