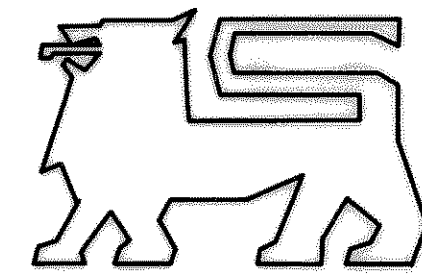
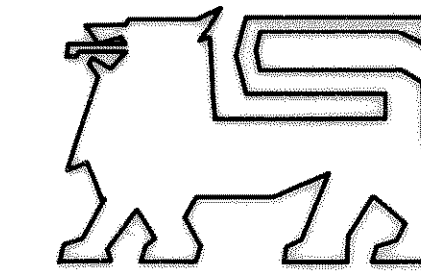


CIVIL CONSTRUCTION PLANS

for



FOOD LION, INC.



SITE NO. 50a

STEGER RETAIL ADDITION

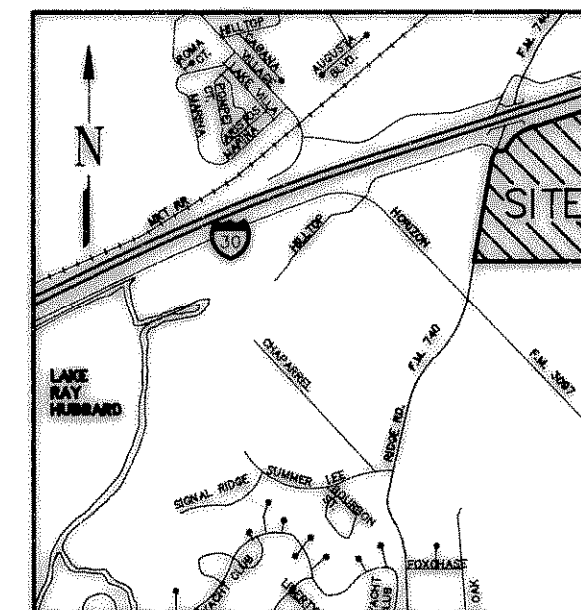
in

ROCKWALL, TEXAS

OWNER:
THE ESTATE OF O.L. STEGER JR.
AND EMILY SUE WHITEHEAD
C/O LAKESIDE NATIONAL BANK
P. O. BOX 9
ROCKWALL, TEXAS 75087
(214) 771-8311

CLIENT:
JEMTEX DEVELOPMENT NO. 50a, INC.
1303 WALNUT HILL, SUITE 130
IRVING, TEXAS 75038
214-550-8221

ARCHITECT:
ARTECH DESIGN GROUP, INC.
2525 BROAD ST., SUITE 201
CHATTANOOGA, TN 37408
615-265-4313



VICINITY MAP

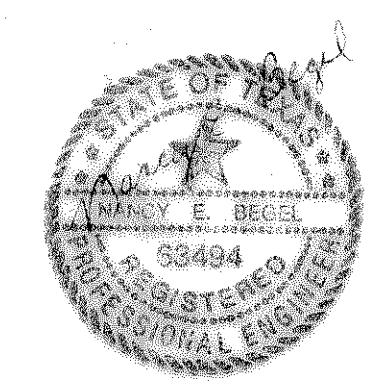
LOT 2, BLOCK 1
STEGER RETAIL ADDITION
JAMES SMITH SURVEY, ABSTRACT No. 200
CITY OF ROCKWALL, ROCKWALL COUNTY, TEXAS

Winkelmann & Associates, Inc. hereby certifies that this plan, to the best of our knowledge is "AS BUILT". All modifications from the originally approved construction documents have been made as per information provided by the contractor. Winkelmann & Associates, Inc. does not certify as to the correctness or quality of construction as no field inspection was performed.

Winkelmann 1-9-92
WINKELMANN & ASSOCIATES, INC. DATE

INDEX

- C-0 COVER SHEET
- C-1 PLAN
- C-1a PARKING & PAVING
- C-1b F.M. 740 IMPROVEMENTS (NOT A PART)
- C-2 GRADING PLAN
- C-2a DRAINAGE PLAN
- C-3 UTILITY PLAN
- C-4 UTILITY PROFILES
- C-5 CIVIL DETAILS
- C-6 STORM DRAIN DETAILS (NOT A PART)
- C-7 WATER DETAILS (NOT A PART)
- C-8 HEADWALL DETAILS (NOT A PART)
- C-9 BORING DETAILS (NOT A PART)
- C-10 LANDSCAPE PLAN (NOT A PART)
- C-11 IRRIGATION PLAN (NOT A PART)
- C-12 LANDSCAPE & IRRIGATION DETAILS (NOT A PART)
- SE-1 SITE ELECTRICAL PLAN



ENGINEER:

Winkelmann & Associates, Inc.

CONSULTING CIVIL ENGINEERS ■ SURVEYORS

12800 HILLCREST ROAD, SUITE 200
DALLAS, TEXAS 75230

(214) 490-7090
(214) 490-7099 FAX