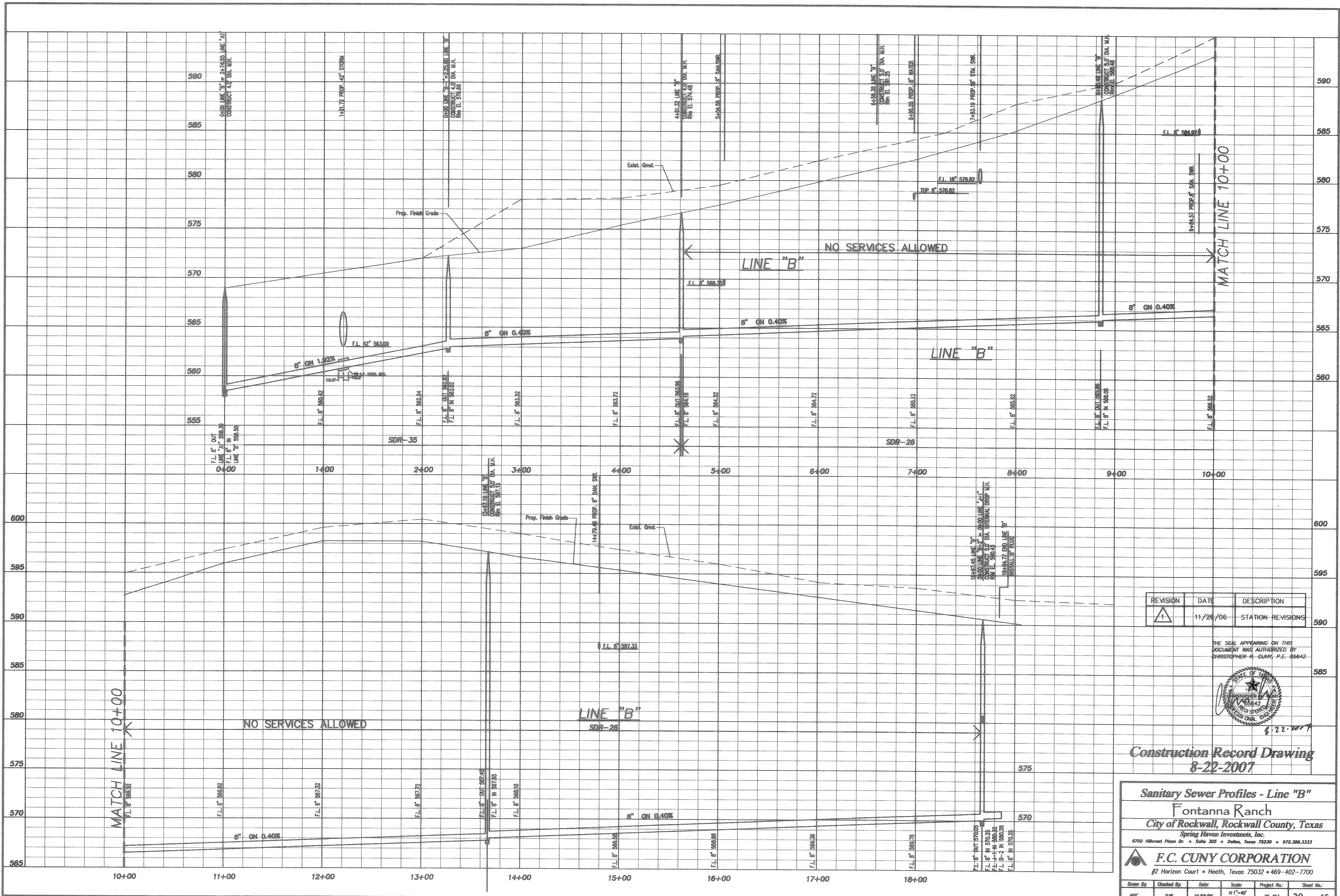
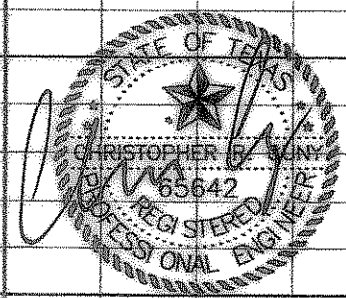


Z:\Projects\6-residential\Fontanna Record Drawings\font-sanbairme\resd.dwg Fri Aug 24 13:00:30 2007



REVISION	DATE	DESCRIPTION
1	11/26/06	STATION REVISIONS

THE SEAL APPEARING ON THIS DOCUMENT WAS AUTHORIZED BY CHRISTOPHER R. GUNY, P.E. 65642



Construction Record Drawing
8-22-2007

Sanitary Sewer Profiles - Line "B"
Fontanna Ranch
 City of Rockwall, Rockwall County, Texas
 Spring Haven Investments, Inc.
 6750 Hillcrest Plaza Dr. • Suite 305 • Dallas, Texas 75230 • 972.386.3333

F.C. CUNY CORPORATION
 #2 Horizon Court • Heath, Texas 75032 • 469-402-7700

Drawn By:	Checked By:	Date:	Scale:	Project No.:	Sheet No.:
MSC	DJW	10/16/06	1/4" = 1'-0"	05-013	39 of 45