

20

19

18

17

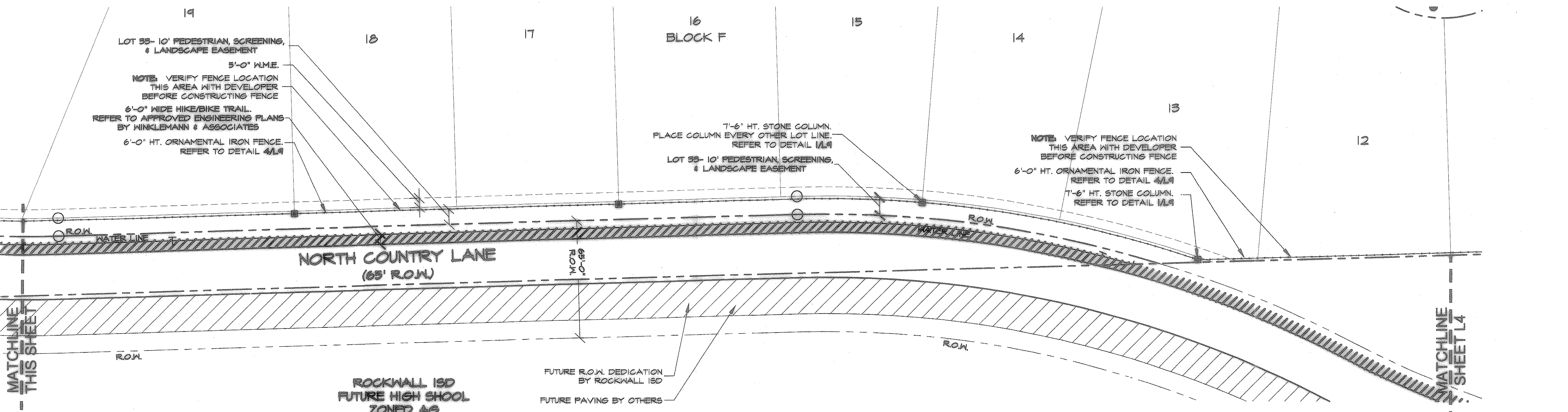
16 BLOCK F

15

14

13

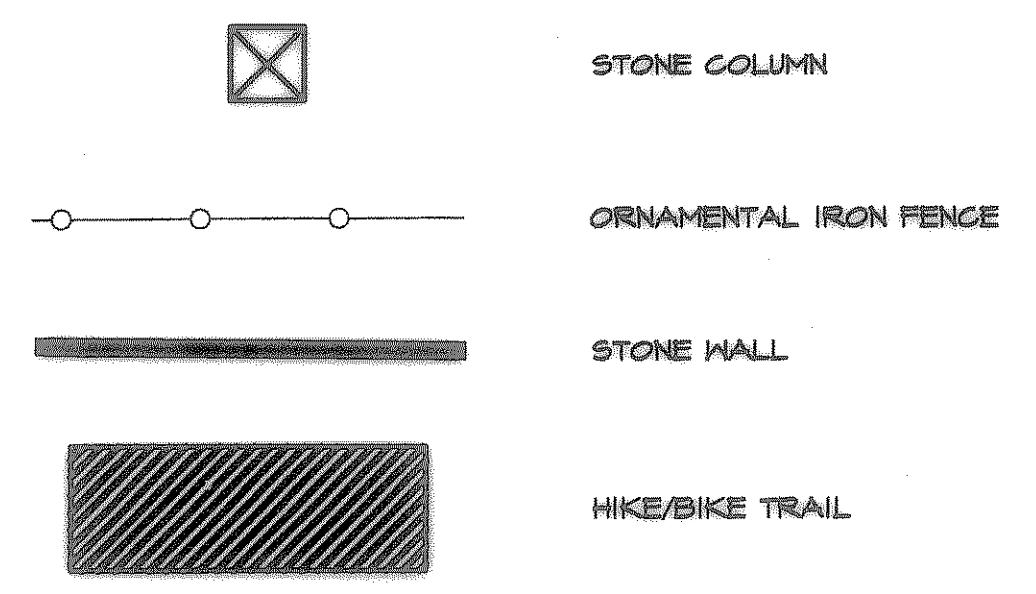
12



MATCHLINE THIS SHEET

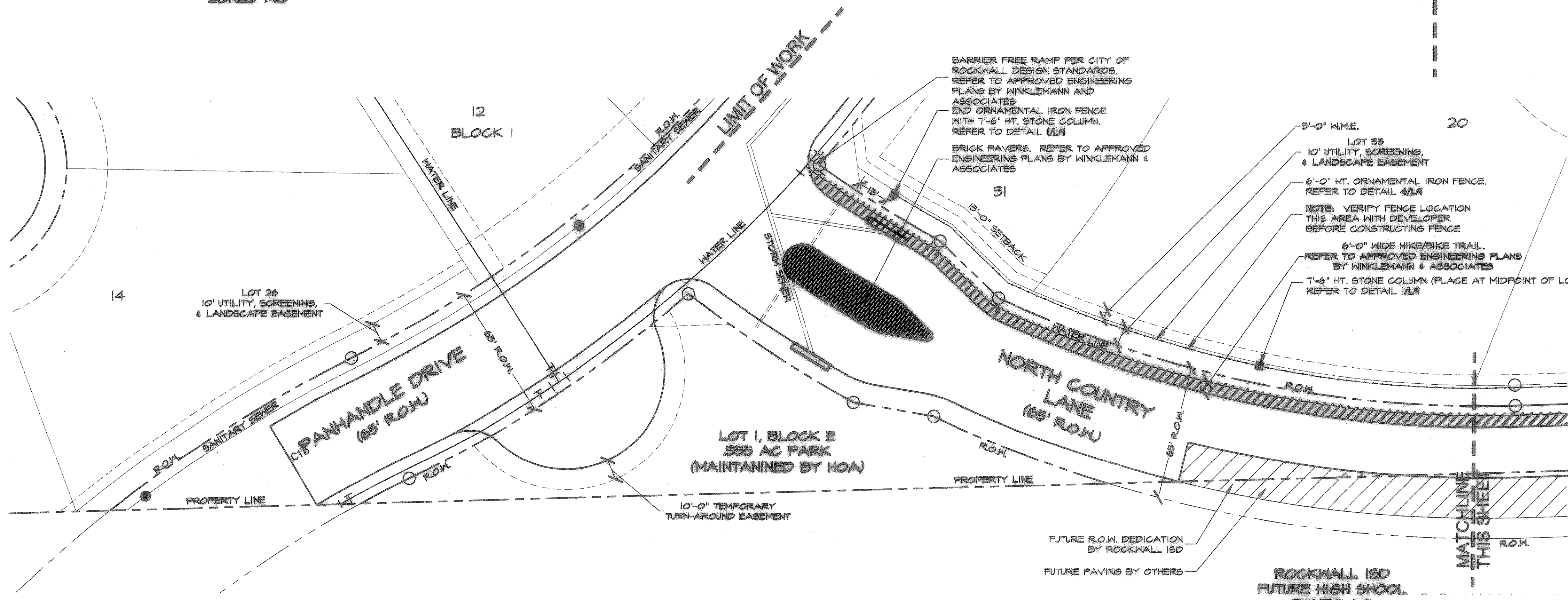
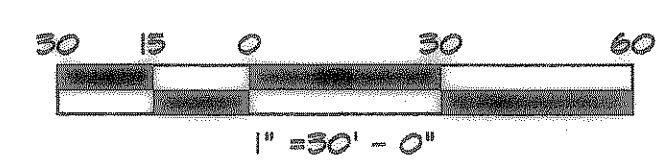
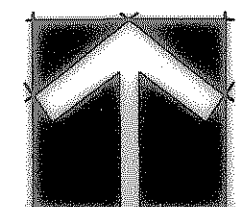
MATCHLINE THIS SHEET L4

SCREENING LEGEND

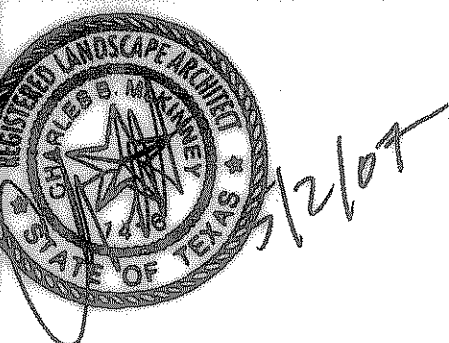


RECORD DOCUMENTS  
THESE RECORD DOCUMENTS HAVE BEEN PREPARED BASED ON INFORMATION PROVIDED BY OTHERS. JONES & BOYD, INC., HAS NOT VERIFIED THE ACCURACY AND/OR COMPLETENESS OF THIS INFORMATION, UNLESS OTHERWISE NOTED ON THESE DOCUMENTS. JONES & BOYD, INC., SHALL NOT BE RESPONSIBLE FOR ANY ERRORS OR OMISSIONS THAT MAY BE INCORPORATED AS A RESULT OF ERRONEOUS INFORMATION PROVIDED BY OTHERS.

JONES & BOYD, INC.  
BY: *[Signature]*  
DATE: 10.18.2007



NO.	REVISIONS DURING CONSTRUCTION	BY	DATE	NO.	REVISIONS DURING PLAN REVIEW	BY	DATE
				5	CITY COMMENTS	TLM	4/26/07
				4	CITY COMMENTS	TLM	4/16/07
				3	REVISED SCREENING LAYOUT	TLM	4/10/07
				2	CITY COMMENTS	TLM	4/6/06
				1	CITY COMMENTS	TLM	2/18/06



**Jones & Boyd, Inc.**  
17090 Dallas Parkway, Suite 200  
Dallas, Texas 75248  
972.248.7676 office  
972.248.1414 fax  
www.jones-boyd.com

- Engineering
- Surveying
- Planning
- Landscape Architecture
- Construction Management

**SCREENING/ LANDSCAPE PLAN**  
Screening Plan- North Country Lane  
Dalton Ranch  
City of Rockwall, Rockwall County, Texas

PROJECT NO. HOE048  
SHEET NO. L6