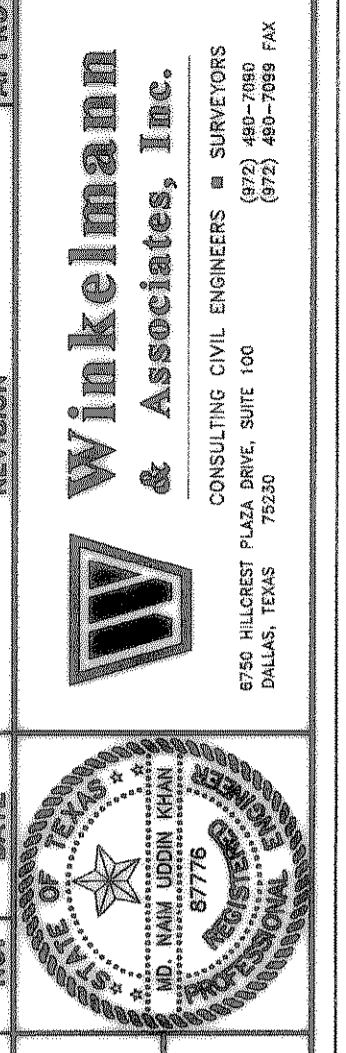


AS BUILT
 To the best of our knowledge "Winkelmann and Associates, Inc." hereby states that this plan is "As-Built". The information is based on surveying conducted at the site and modification information provided by "the Contractor".
M. Namuddin Khan 9/25/07
 WINKELMANN & ASSOCIATES, INC. DATE

- NOTE:
- 1) PAVEMENT SHALL CONSIST OF 6" 3600 P.S.I. REINFORCED CONCRETE AND 6" LIME-STABILIZED SUBGRADE WITH 6" PARABOLIC CROWN FOR 28' STREETS.
 - 2) PAVEMENT SHALL CONSIST OF 8" 3600 P.S.I. REINFORCED CONCRETE AND 6" LIME-STABILIZED SUBGRADE WITH 7" PARABOLIC CROWN FOR 44' STREETS.
 - 3) PAVEMENT FOR ALLEYS SHALL CONSIST OF 4000 P.S.I. REINFORCED CONCRETE AND 6" LIME-STABILIZED SUBGRADE WITH 5" INVERT. TYPICAL ALLEY SECTION WILL BE 7'-5"-7'.
 - 4) CONTRACTOR TO RUN LINE SERIES BEFORE CONSTRUCTION.

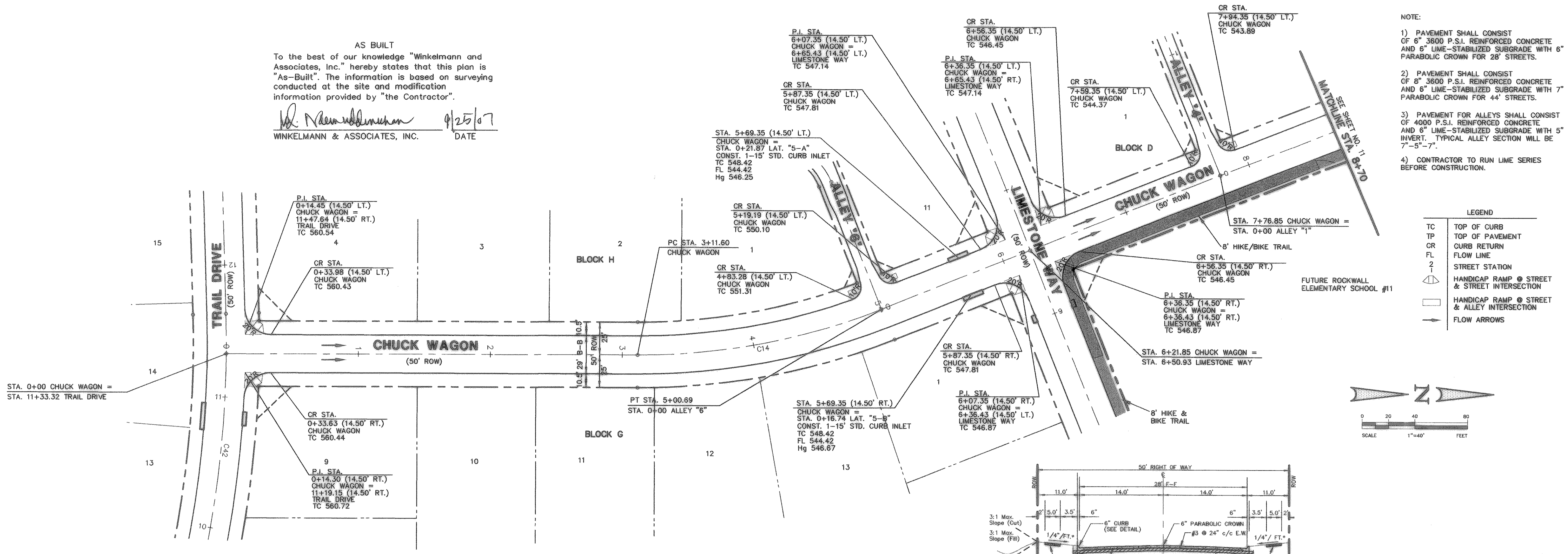


THESE CONSTRUCTION PLANS WERE PREPARED UNDER THE RESPONSIBLE SUPERVISION OF JOHN M. GLASS, REGISTERED PROFESSIONAL ENGINEER NO. 87776.
 M. Namuddin Khan 9/25/07

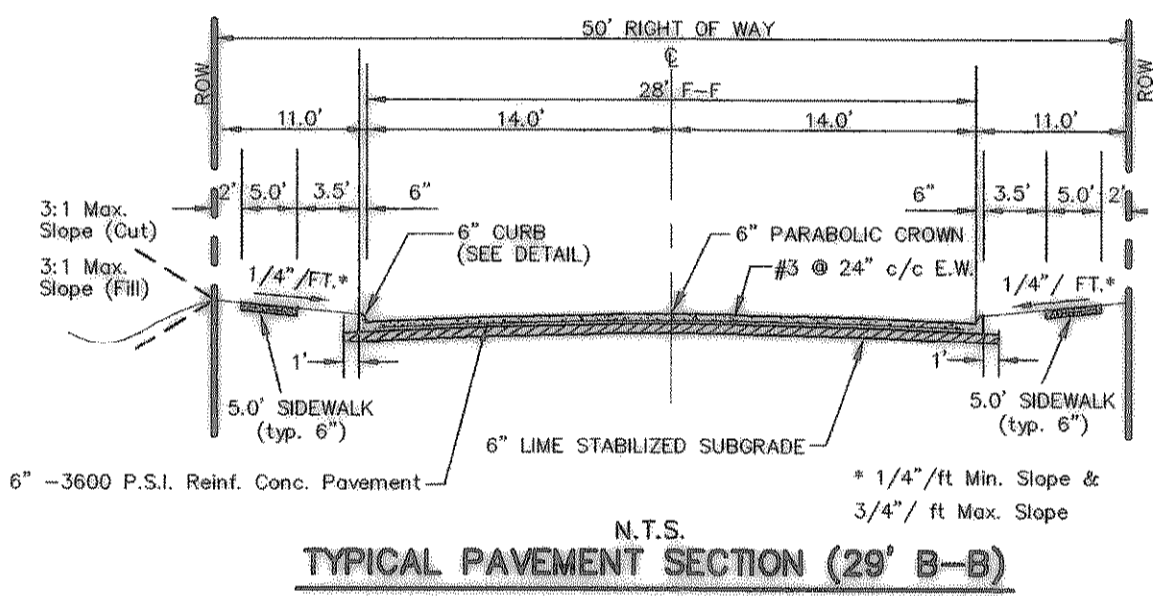
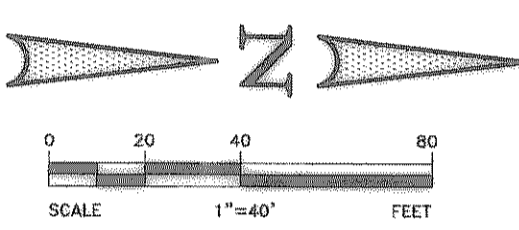
THE SEAL APPEARING ON THIS DOCUMENT WAS AUTHORIZED BY MD. NAM UDDIN KHAN, P.E. #87776

JOHN M. GLASS SURVEY ABSTRACT No. 88
 CITY OF ROCKWALL
 ROCKWALL COUNTY, TEXAS
 D R HORTON
 4306 MILLER ROAD, SUITE A
 ROWLETT, TEXAS 75088
 214-607-4244

Scale: 1" = 40'
 Date: 09/08/06
 Designed By: IT / RS
 Drawn By: IT / RS
 Checked By: NK
 File: 40709PAV.DWG View: P08
 Project No.: 40709.00



- LEGEND
- TC TOP OF CURB
 - TP TOP OF PAVEMENT
 - CR CURB RETURN
 - FL FLOW LINE
 - 2 STREET STATION
 - 1 HANDICAP RAMP @ STREET & STREET INTERSECTION
 - 2 HANDICAP RAMP @ STREET & ALLEY INTERSECTION
 - FLOW ARROWS



STREET CENTER LINE CURVE TABLE

CURVE	RADIUS	DELTA	TANGENT LENGTH	CHORD	BEARING
C14	500.00'	21°46'54"	96.20'	190.08'	188.94' N10°42'53"W

BENCHMARK 1 USGS Monument--stamped Boren 1986
 Located approximately 1.25 miles east of Rockwall at the Rockwall Municipal Airport, in the north end of a circular grass area at the end of a roadway.
 ELEVATION = 574.77

BENCHMARK 2 USGS Monument--5" cap stamped N 1495/1986
 Located 24.6 feet west of the center of a paved road leading to the Rockwall Municipal Airport, 16.4 feet south of a utility pole with a transformer and light, 2 feet west of the north leg of a sign. Access to datum point is through a 5 inch logo cap.
 ELEVATION = 567.44

