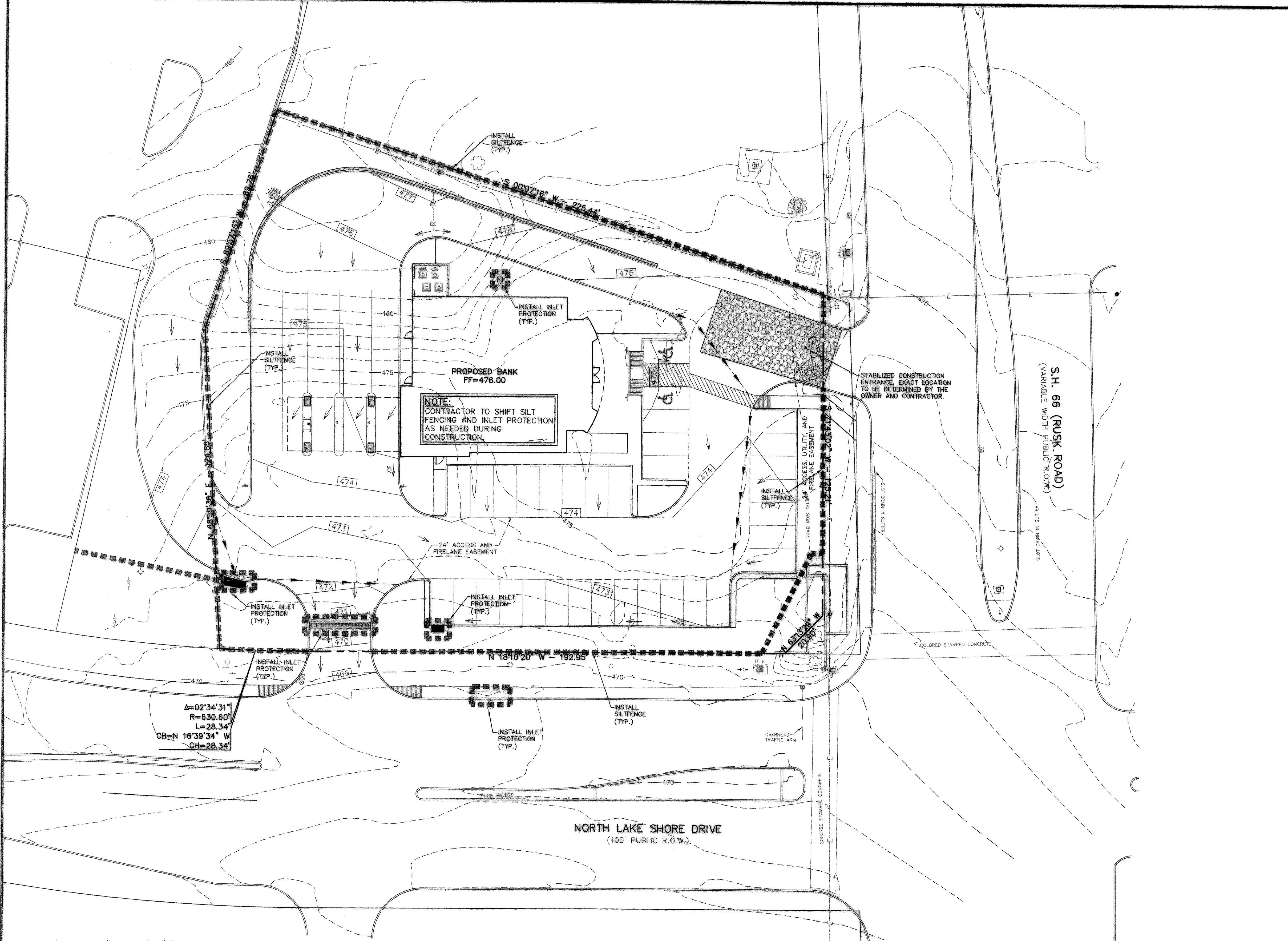


- GENERAL NOTES:**
1. EROSION CONTROL DEVICES AS SHOWN ON THE EROSION CONTROL PLAN FOR THE PROJECT SHALL BE INSTALLED PRIOR TO THE START OF THE LAND DISTURBING ACTIVITIES ON THE PROJECT.
 2. ALL EROSION CONTROL DEVICES ARE TO BE INSTALLED IN ACCORDANCE WITH THE APPROVED PLANS AND SPECIFICATIONS FOR THE PROJECT.
 3. IF THE EROSION CONTROL PLAN AS APPROVED CANNOT CONTROL EROSION AND OFF-SITE SEDIMENT FROM THE PROJECT THE EROSION CONTROL PLAN WILL BE REQUIRED TO BE REVISED AND/OR ADDITIONAL EROSION CONTROL DEVICES WILL BE REQUIRED ON SITE.
 4. IF OFF-SITE SOIL BORROW OR SPOIL SITES ARE USED IN CONJUNCTION WITH THIS PROJECT, THIS INFORMATION SHALL BE DISCLOSED AND SHOWN ON THE EROSION CONTROL PLAN. THESE AREAS SHALL BE STABILIZED WITH PERMANENT GROUND COVER PRIOR TO FINAL APPROVAL OF THE PROJECT.
 5. THE CONTRACTOR IS RESPONSIBLE FOR PROVIDING THE STORM WATER POLLUTION AND PREVENTION PLAN (SWPPP) IF REQUIRED.
 6. REFERENCE LANDSCAPE PLAN FOR TREE PROTECTION INFORMATION

NOTE:
 THIS PLAN REFLECTS MINIMUM REQUIREMENTS ONLY, AND DOES NOT CONSTITUTE A STORM WATER POLLUTION PREVENTION PLAN. THE CONTRACTOR SHALL PROVIDE ADDITIONAL CONTROLS AS REQUIRED BY FIELD CONDITIONS AND CONSTRUCTION SCHEDULING. THE CONTRACTOR SHALL COMPLY FULLY WITH ANY APPLICABLE REQUIREMENTS AS ESTABLISHED IN THE CURRENT TPDES GENERAL PERMITS FOR STORM WATER DISCHARGES FROM CONSTRUCTION ACTIVITIES IN REGION 6.
 NCTCOG PUBLISHES ACCEPTABLE CONTROLS IN A REFERENCE MANUAL ENTITLED "STORM WATER QUALITY BEST MANAGEMENT PRACTICES FOR CONSTRUCTION ACTIVITIES." THIS MANUAL CAN BE OBTAINED THROUGH THE INTERNET AT: WWW.DFWSTORMWATER.COM.



$\Delta=02^{\circ}34'31''$
 $R=630.60'$
 $L=28.34'$
 $CB=N 16^{\circ}39'34'' W$
 $CH=28.34'$

CAUTION!!!
 CALL TEXAS ONE CALL @
 1-800-245-4545
 48 HRS PRIOR TO CONSTRUCTION.

!!! CAUTION !!!
UNDERGROUND UTILITIES

EXISTING UTILITIES AND UNDERGROUND FACILITIES INDICATED ON THESE PLANS HAVE BEEN LOCATED FROM REFERENCE INFORMATION SUPPLIED BY VARIOUS OWNERS OF THE FACILITIES. THE ENGINEER DOES NOT ACCEPT THE RESPONSIBILITY FOR THE UTILITY LOCATIONS SHOWN. IT SHALL BE THE RESPONSIBILITY OF THE CONTRACTOR TO VERIFY BOTH HORIZONTALLY AND VERTICALLY THE LOCATION OF ALL EXISTING UTILITIES AND UNDERGROUND FACILITIES PRIOR TO CONSTRUCTION, TO TAKE NECESSARY PRECAUTIONS IN ORDER TO PROTECT ALL FACILITIES ENCOUNTERED, AND TO NOTIFY THE ENGINEER PROMPTLY OF ALL CONFLICTS OF THE WORK WITH EXISTING FACILITIES. THE CONTRACTOR SHALL PRESERVE AND PROTECT ALL EXISTING UTILITIES FROM DAMAGE DURING CONSTRUCTION. ANY DAMAGE BY THE CONTRACTOR TO EXISTING UTILITIES SHALL BE REPAIRED BY THE CONTRACTOR AT HIS OR HER EXPENSE.

BENCHMARK
 BENCHMARK: CITY OF ROCKWALL MONUMENT #10, ON MEDIAN OF NORTH LAKESHORE DRIVE NORTH OF INTERSECTION OF NORTH LAKESHORE DRIVE AND NORTH ALAMO STREET, APPROXIMATELY 168 FEET NORTH OF SOUTH END OF MEDIAN / BACK OF CURB.
 ELEVATION=524.788'
 CITY OF ROCKWALL MONUMENT #11, ON MEDIAN OF NORTH LAKESHORE DRIVE NORTH OF HAVEN HILL COURT, AND SOUTH OF STONEBROOK ROAD, 2.3 FEET NORTHWEST OF SOUTH END OF MEDIAN / BACK OF CURB
 ELEVATION=518.832'

AS-BUILT

NOTE:
 THESE PLANS HAVE BEEN REVISED TO CONFORM WITH CONSTRUCTION RECORDS PROVIDED BY CONTRACTOR.



EROSION CONTROL PLAN	
CHASE BANK-S.H. 66 & LAKE SHORE DRIVE	
CITY OF ROCKWALL	
ROCKWALL COUNTY, TEXAS	
	O'DONALD ENGINEERING LLC
	1601 E. Lamar Blvd, Suite 210 Arlington, Texas 76011 Phone 817.794.0202 Fax 817.548.8430
DATE 08/28/08	SCALE 1"=20'
JOB NO. 0007012	SHEET C8

Copyright 2008 O'Donald Engineering, Inc. All Rights Reserved. No part of this document may be reproduced, stored in a retrieval system, or transmitted in any form or by any means, electronic, mechanical, photocopying, recording, or by any information storage and retrieval system, without the prior written permission of O'Donald Engineering, Inc.