

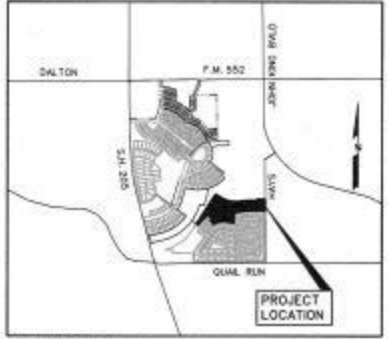


CURVE TABLE

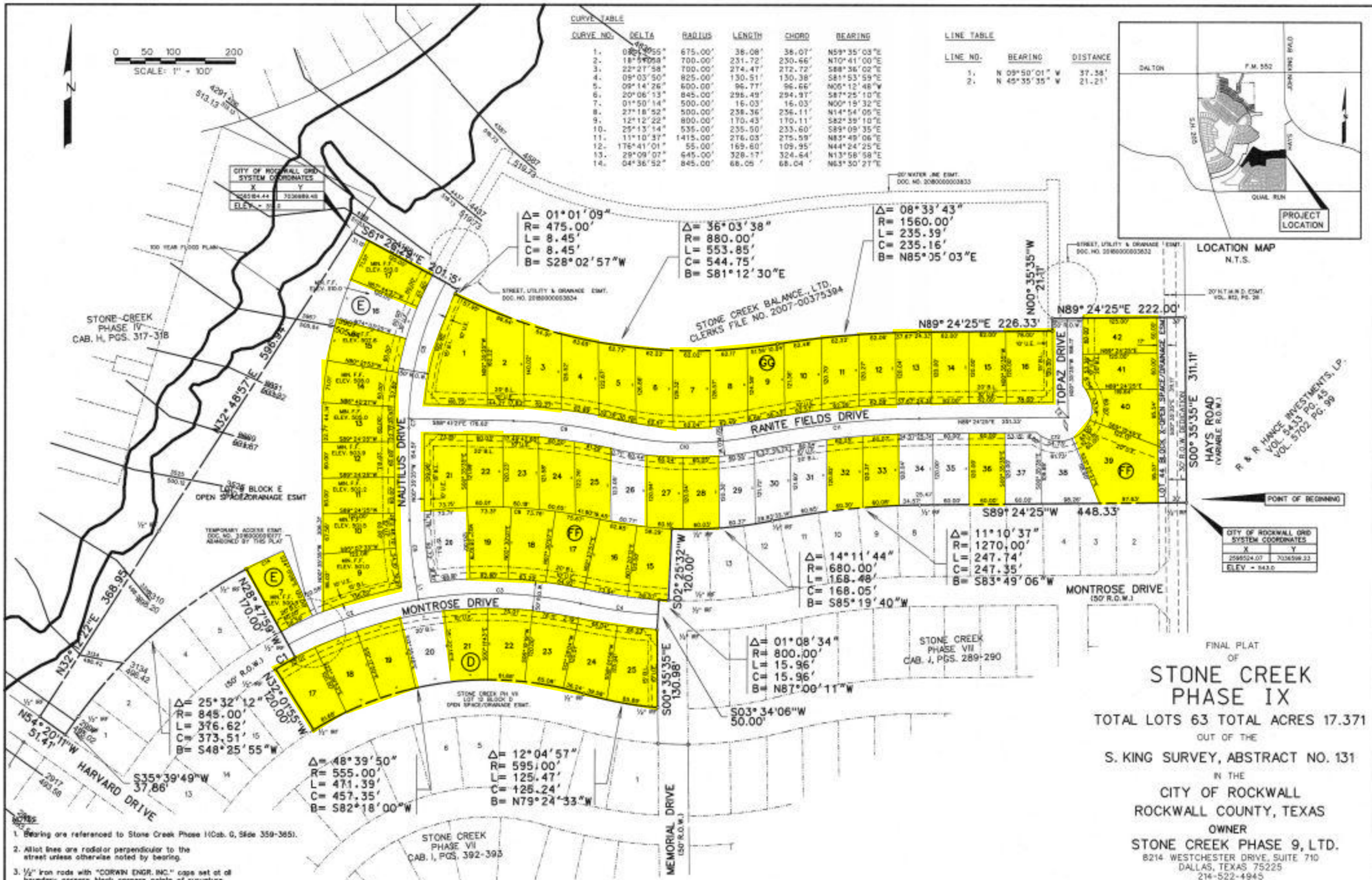
CURVE NO.	DELTA	RADIUS	LENGTH	CHORD	BEARING
1.	08°30'55"	675.00'	38.08'	36.07'	N59°35'03"E
2.	18°57'09"	700.00'	231.72'	250.66'	N70°41'00"E
3.	22°27'58"	700.00'	274.47'	272.72'	S89°36'02"E
4.	09°03'50"	825.00'	130.51'	130.38'	S81°53'59"E
5.	09°14'26"	800.00'	96.77'	96.60'	N00°15'48"W
6.	20°06'13"	845.00'	296.49'	294.97'	S87°25'10"E
7.	01°50'14"	500.00'	16.03'	16.03'	N00°19'32"E
8.	27°18'52"	500.00'	236.36'	236.11'	N14°54'05"E
9.	12°12'22"	800.00'	170.43'	170.11'	S82°39'10"E
10.	25°13'14"	535.00'	235.50'	235.50'	S89°09'35"E
11.	11°10'37"	1415.00'	276.03'	275.99'	N83°49'08"W
12.	176°41'01"	55.00'	169.60'	109.95'	N44°24'25"E
13.	29°09'07"	645.00'	328.17'	324.64'	N13°58'58"E
14.	04°36'52"	845.00'	68.05'	68.04'	N63°30'27"E

LINE TABLE

LINE NO.	BEARING	DISTANCE
1.	N 09°50'01" W	37.38'
2.	N 45°35'35" W	21.21'



LOCATION MAP
N.T.S.



20' W. H. & D. EMT.
VOL. 82, PG. 26

R & R HANCE INVESTMENTS, L.P.
VOL. 24-53 PG. 45
VOL. 5702 PG. 99

CITY OF ROCKWALL GRID SYSTEM COORDINATES	
X	Y
259524.07	7036598.33
ELEV. = 843.0	

**STONE CREEK
PHASE IX**

TOTAL LOTS 63 TOTAL ACRES 17.371
OUT OF THE
S. KING SURVEY, ABSTRACT NO. 131

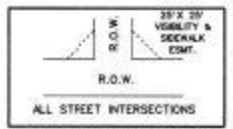
CITY OF ROCKWALL
ROCKWALL COUNTY, TEXAS

OWNER
STONE CREEK PHASE 9, LTD.

8214 WESTCHESTER DRIVE, SUITE 710
DALLAS, TEXAS 75225
214-522-4945
PREPARED BY
CORWIN ENGINEERING, INC.
TBPLS #10031700
200 W. BELMONT, SUITE E
ALLEN, TEXAS 75013
972-396-1200

JANUARY 2019 SCALE 1" = 100'

- Bearing are referenced to Stone Creek Phase I (Cab. 0, Sides 359-385).
- Allot lines are radial or perpendicular to the street unless otherwise noted by bearing.
- 1/2" Iron rods with "CORWIN ENGR. INC." caps set at all boundary corners, block corners, points of curvature, points of tangency, and angle points in public right-of-way unless otherwise noted.
- B.L. - Building Line.
U.E. - Utility Easements.
C.M. - Controlling Monument.
D.E. - Drainage Easement.
V.M.A.S. - Visibility, Maintenance & Sidewalk Easement.
- Street Name Change
- The HOA will be responsible for maintaining the open space/drainage easement lots. (Lot 8 Block E & Lot 44 Block X)



VISIBILITY & SIDEWALK EASEMENT DETAIL
N.T.S.