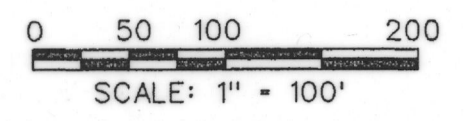


1392

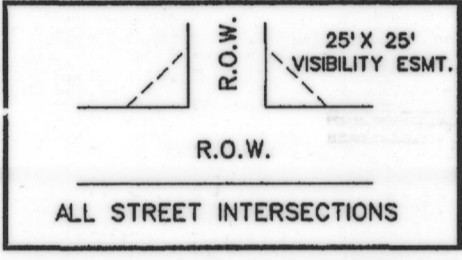
2016000011737 1/3 PLAT 07/13/2016 09:31:52 AM



FINAL PLAT
OF
**STONE CREEK
PHASE VII**
TOTAL LOTS 80 TOTAL ACRES 37.827
OUT OF THE
S. KING SURVEY, ABSTRACT NO. 131
IN THE
CITY OF ROCKWALL
ROCKWALL COUNTY, TEXAS
OWNER
MERITAGE HOMES OF TEXAS, LLC.
8840 CYPRESS WATERS BLVD., SUITE 100
DALLAS, TEXAS 75019
PREPARED BY
CORWIN ENGINEERING, INC.
200 W. BELMONT, SUITE E
ALLEN, TEXAS 75013
972-396-1200
JANUARY 2016 SCALE 1" = 100' FF-504.2
CASE NO. P2016-003
SHEET 1 OF 3

CITY OF ROCKWALL GRID SYSTEM COORDINATES

X	Y
2594424.84	7036260.39
ELEV = 552.0	



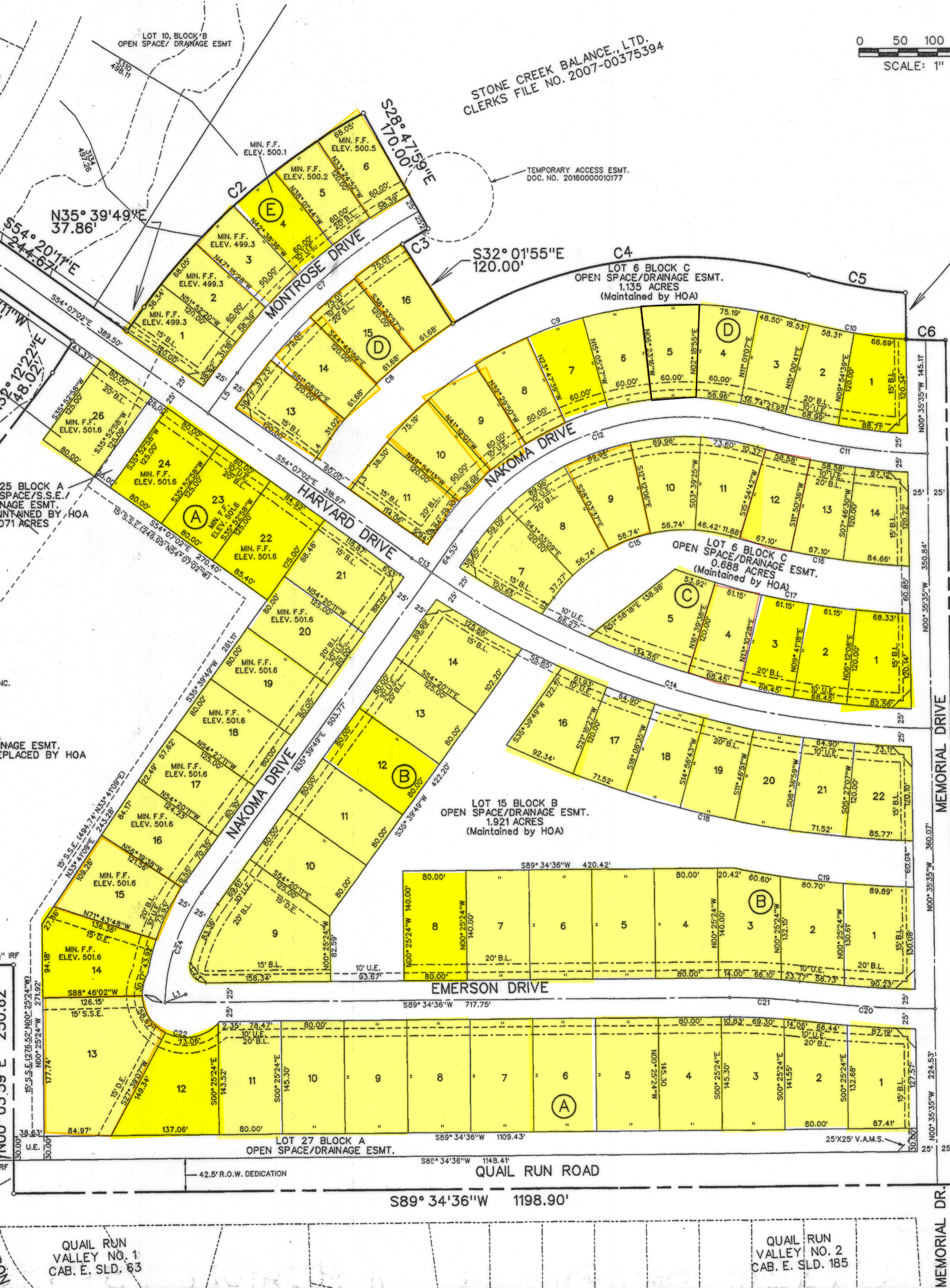
TOTAL LOTS 79
TOTAL ACRES 37.827

STONE CREEK BALANCE, LTD.
CLERKS FILE NO. 2007-00375394

- NOTES**
- Bearing are referenced to Stone Creek Phase I (Cab. G, Slide 359-365).
 - All lot lines are radial or perpendicular to the street unless otherwise noted by bearing.
 - 1/2" iron rods with "CORWIN ENGR. INC." caps set at all boundary corners, block corners, points of curvature, points of tangency, and angle points in public right-of-way unless otherwise noted.
 - B.L. - Building Line.
U.E. - Utility Easements.
C.M. - Controlling Monument.
D.E. - Drainage Easement
F.F. - Finished Floor
S.S.E. - Sanitary Sewer Easement
V.A.M.S. - Visibility, Maintenance & Sidewalk Easement
- Street Name Change

QUAIL RUN
FIRE STATION NO. 3
DOC. NO. 2008-00407699

POINT OF BEGINNING
N00° 03' 59" E 250.62'
N00° 03' 59" E 42.50'



MEMORIAL DRIVE
S00° 35' 35" E 1080.02'

STONE CREEK BALANCE, LTD.
CLERKS FILE NO. 2007-00375394

CITY OF ROCKWALL GRID SYSTEM COORDINATES

X	Y
2595701.24	7035097.53
ELEV = 551.0	

Stone Creek Ph VII
Total lots 80
Final Plat