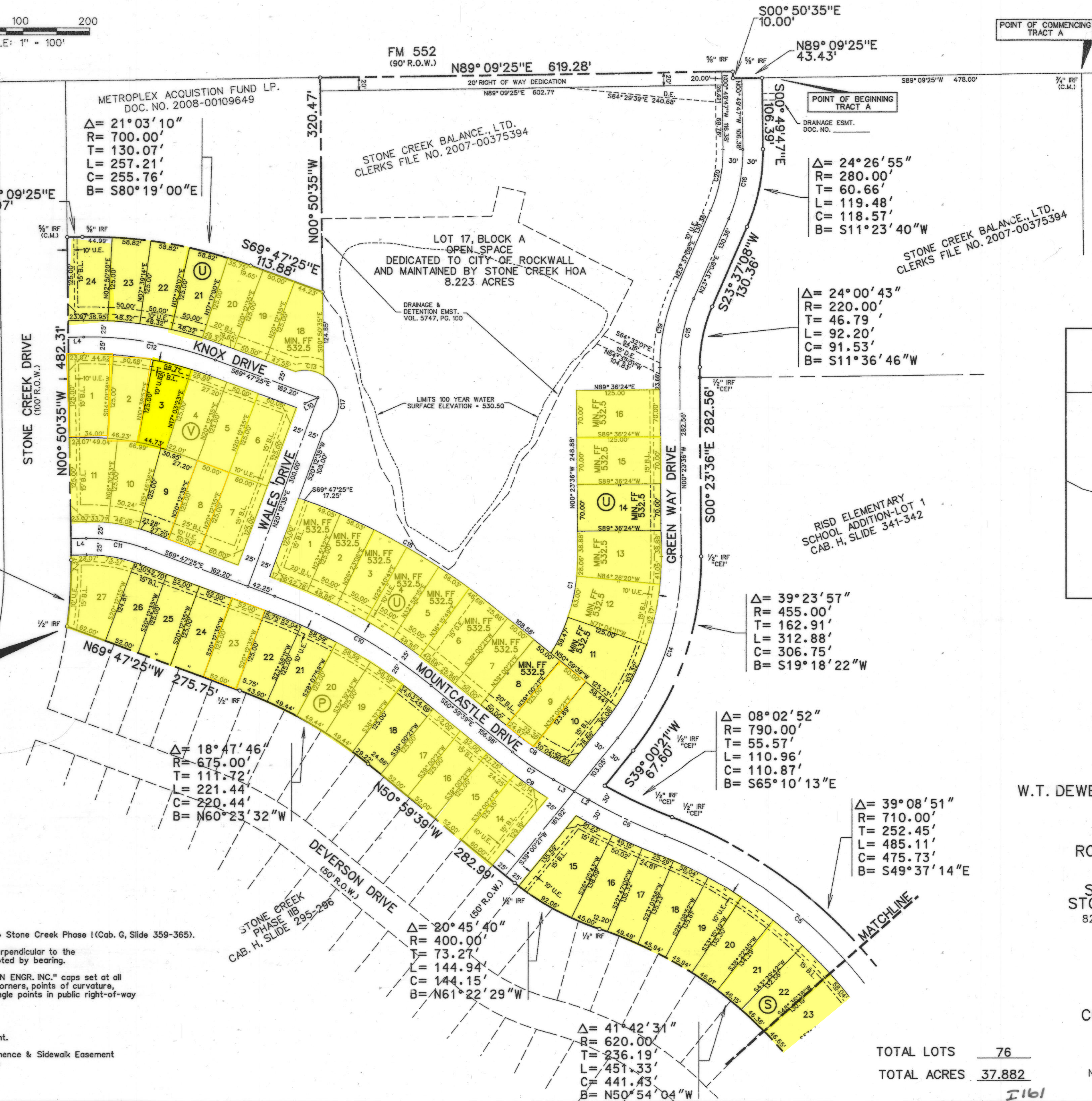


STONE CREEK RETAIL ADDITION  
LOT 1-6 BLOCK A  
CAB. H, SLIDE 15-18

$\Delta = 08^{\circ}44'20''$   
R = 650.00'  
T = 49.67'  
L = 99.14'  
C = 99.04'  
B = N03^{\circ}31'35''E

CITY OF ROCKWALL GRID SYSTEM COORDINATES	
X	Y
2593647.47	7039467.68
ELEV = 552.0	

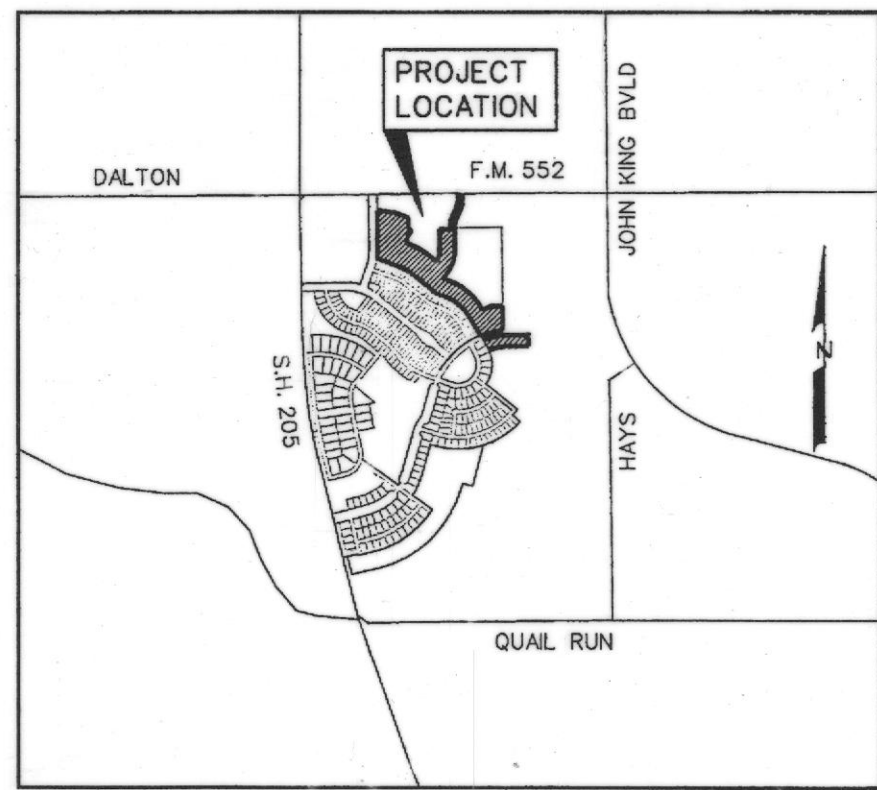
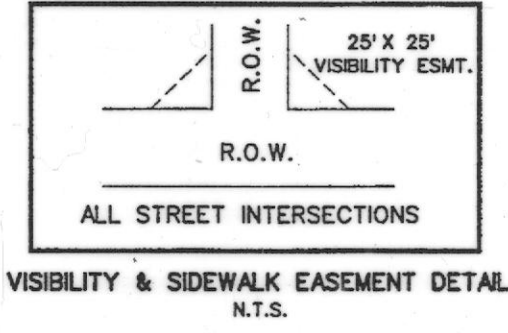
- NOTES**
- Bearing are referenced to Stone Creek Phase I (Cab. G, Slide 359-365).
  - All lot lines are radial or perpendicular to the street unless otherwise noted by bearing.
  - 1/2" iron rods with "CORWIN ENGR. INC." caps set at all boundary corners, block corners, points of curvature, points of tangency, and angle points in public right-of-way unless otherwise noted.
  - B.L. - Building Line.  
U.E. - Utility Easements.  
C.M. - Controlling Monument.  
D.E. - Drainage Easement  
V.A.M.S. - Visibility, Maintenance & Sidewalk Easement  
- Street Name Change



POINT OF COMMENCING TRACT A

POINT OF BEGINNING TRACT A

ROCKWALL MIDDLE SCHOOL  
NO. 4 ADDITION  
LOTS 1 & 2, BLOCK 1  
CAB. F, SLIDE 67



LOCATION MAP  
N.T.S.

FINAL PLAT  
OF  
**STONE CREEK  
PHASE VI**  
OUT OF THE  
W.T. DEWEESE SURVEY, ABSTRACT NO. 71

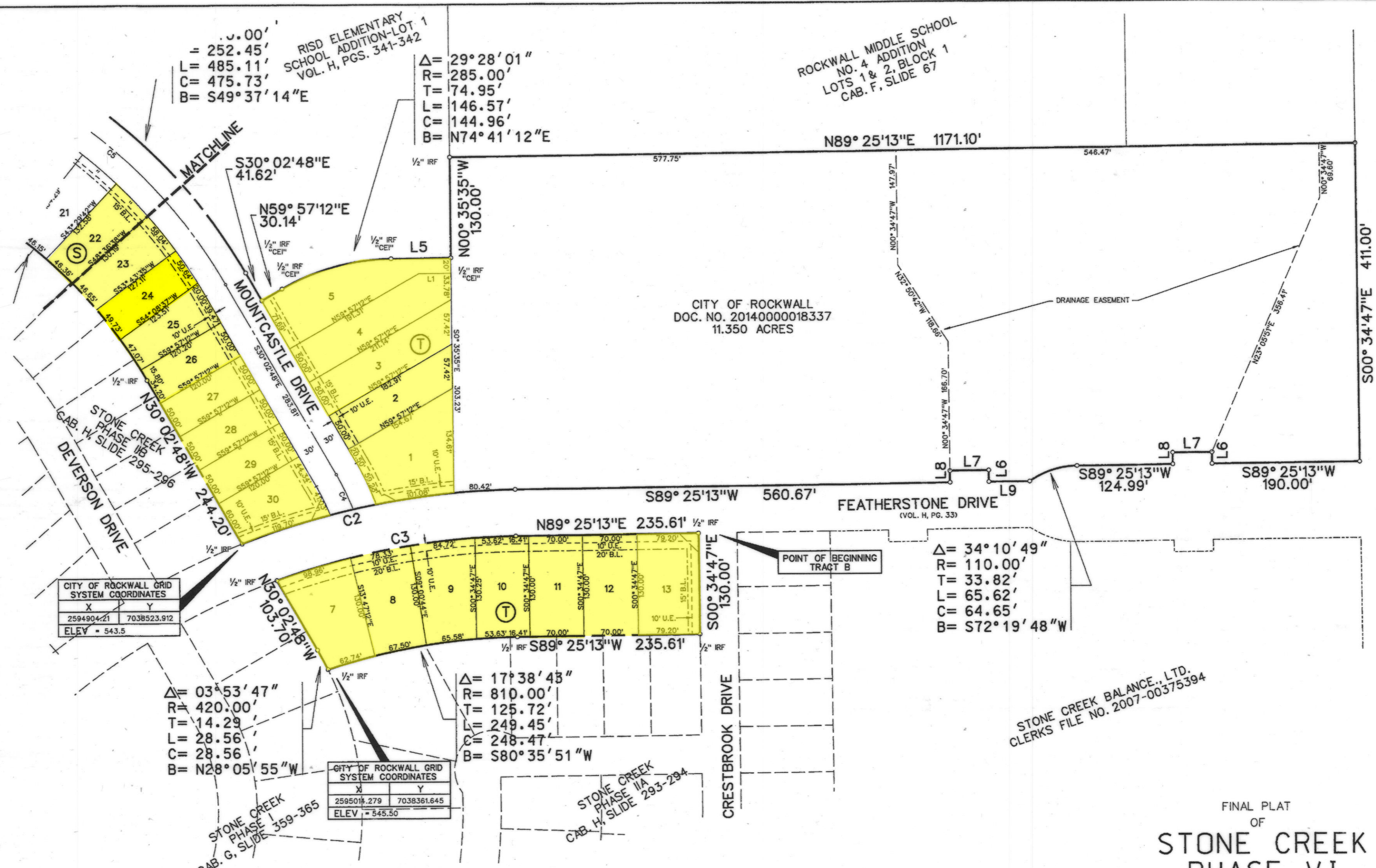
IN THE  
CITY OF ROCKWALL  
ROCKWALL COUNTY, TEXAS  
OWNERS  
STONE CREEK SF, LTD. &  
STONE CREEK BALANCE, LTD.  
8214 WESTCHESTER DRIVE, SUITE 710  
DALLAS, TEXAS 75219  
214-522-4945

CITY OF ROCKWALL  
385 S. GOLIAD  
ROCKWALL, TEXAS 75087  
PREPARED BY  
CORWIN ENGINEERING, INC.  
200 W. BELMONT, SUITE E  
ALLEN, TEXAS 75013  
972-396-1200

TOTAL LOTS 76  
TOTAL ACRES 37.882

NOVEMBER 2014 SCALE 1" = 100'

1161



CURVE TABLE

CURVE NO.	DELTA	RADIUS	LENGTH	TANGENT	CHORD	BEARING
1.	31°56'36"	270.00'	150.53'	77.28'	148.59'	N15°34'42"E
2.	20°43'45"	1000.00'	361.79'	182.90'	359.82'	S79°03'20"W
3.	19°14'20"	940.00'	315.63'	159.32'	314.15'	N79°48'03"E
4.	09°19'50"	305.00'	49.67'	24.89'	49.61'	S25°22'53"E
5.	39°08'51"	680.00'	464.61'	241.79'	455.63'	N49°37'14"W
6.	08°46'38"	820.00'	125.62'	62.93'	125.49'	N64°48'20"W
7.	09°25'22"	450.00'	74.01'	37.09'	73.92'	N55°42'20"W
8.	10°55'35"	290.50'	55.40'	27.78'	55.32'	S56°27'27"E
9.	05°41'18"	850.00'	84.39'	42.23'	84.35'	S53°50'18"E
10.	18°47'46"	825.00'	270.64'	136.55'	269.43'	N60°23'32"W
11.	21°03'10"	250.00'	91.86'	46.45'	91.34'	N80°19'00"W
12.	21°03'10"	550.00'	202.09'	102.20'	200.96'	S80°19'00"E
13.	50°07'15"	50.00'	43.74'	23.38'	42.36'	S81°36'00"E
14.	39°23'57"	425.00'	292.25'	152.17'	286.52'	N19°18'22"E
15.	24°00'43"	250.00'	104.77'	53.17'	104.01'	N11°36'46"E
16.	24°26'55"	250.00'	106.68'	54.16'	105.87'	N11°23'40"E
17.	113°37'09"	50.00'	99.15'	76.44'	83.69'	S00°16'12"W
18.	18°47'46"	975.00'	319.85'	161.38'	318.42'	S60°23'32"E
19.	24°00'43"	280.00'	117.34'	59.55'	116.49'	N11°36'46"E
20.	24°26'55"	220.00'	93.88'	47.66'	93.17'	N11°23'40"E

LINE TABLE

LINE NO.	BEARING	DISTANCE
1.	N 89°25'13" E	41.86'
2.	N 60°25'01" W	25.34'
3.	N 60°25'01" W	35.69'
4.	S 89°09'25" W	23.07'
5.	N 89°25'13" E	77.24'
6.	N 00°35'35" W	15.00'
7.	S 89°25'13" W	50.00'
8.	S 00°35'35" E	15.00'
9.	S 89°25'13" W	53.21'
10.	S 65°12'35" W	21.21'

FINAL PLAT  
 OF  
**STONE CREEK  
 PHASE VI**  
 OUT OF THE  
 W.T. DEWESE SURVEY, ABSTRACT NO. 71

IN THE  
 CITY OF ROCKWALL  
 ROCKWALL COUNTY, TEXAS  
 OWNERS  
**STONE CREEK SF, LTD. &  
 STONE CREEK BALANCE, LTD.**  
 8214 WESTCHESTER DRIVE, SUITE 710  
 DALLAS, TEXAS 75219  
 214-522-4945

CITY OF ROCKWALL  
 385 S. GOLIAD  
 ROCKWALL, TEXAS 75087  
 PREPARED BY  
**CORWIN ENGINEERING, INC.**  
 200 W. BELMONT, SUITE E  
 ALLEN, TEXAS 75013  
 972-396-1200

NOVEMBER 2014 SCALE 1" = 100'