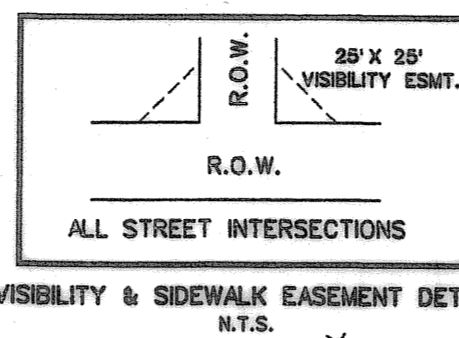


LOCATION MAP  
N.T.S.

**NOTES**

- Bearing are referenced to Stone Creek Phase I (Vol. G, Pg.359-365).
- All lot lines are radial or perpendicular to the street unless otherwise noted by bearing.
- 1/2" iron rods with "CORWIN ENGR. INC." caps set at all boundary corners, block corners, points of curvature, points of tangency, and angle points in public right-of-way unless otherwise noted.
- B.L. - Building Line.  
U.E. - Utility Easements.  
C.M. - Controlling Monument.  
D.E. - Drainage Easement  
F.F. - Finish Floor  
V.A.M.S. - Visibility, Maintenance & Sidewalk Easement  
BFE - Base Flood Elevation  
S.E. - Sidewalk Easement  
- Street Name Change
- All open spaces, drainage areas and other common areas shall be maintained by the Homeowners Association.



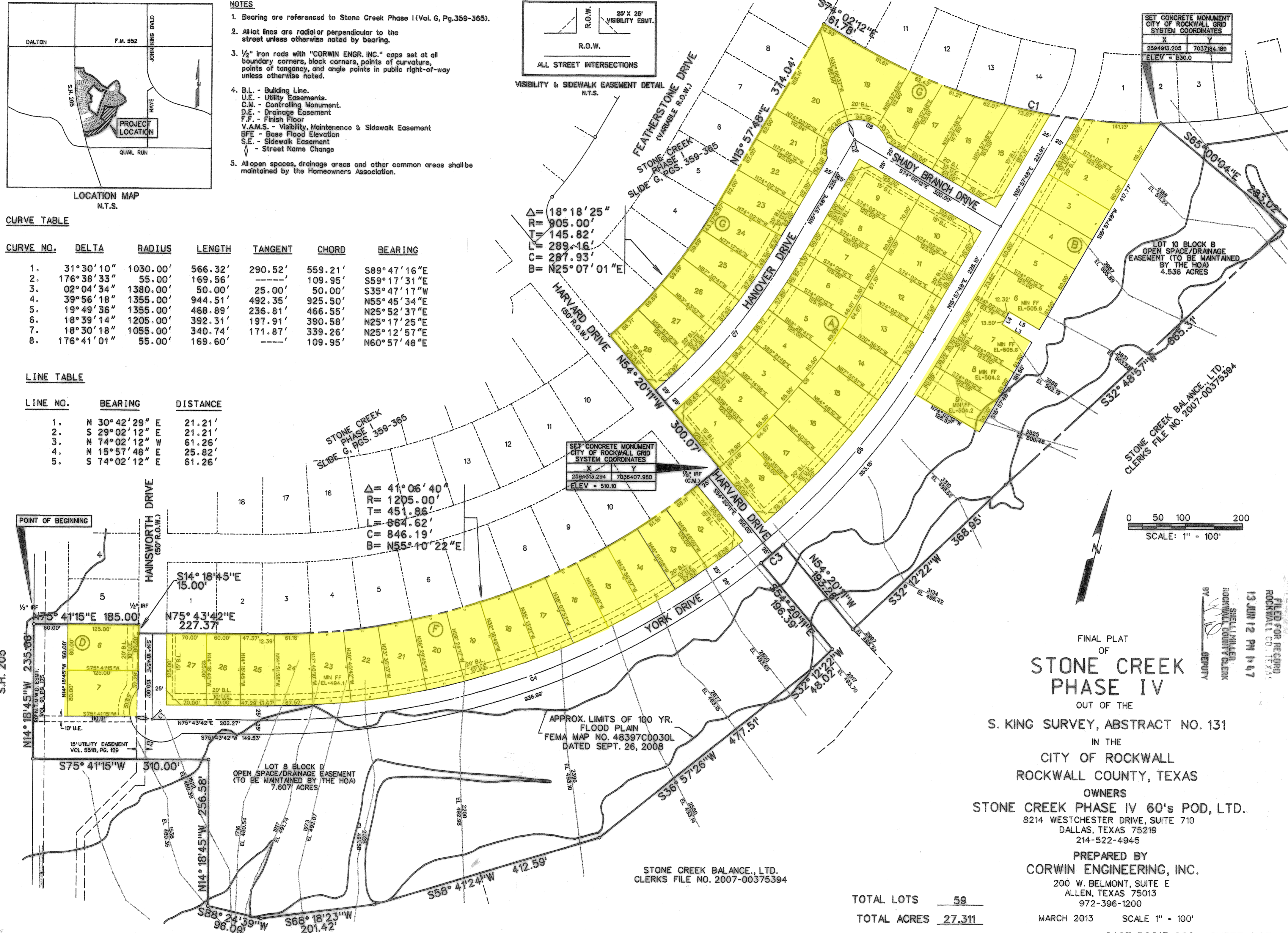
VISIBILITY & SIDEWALK EASEMENT DETAIL  
N.T.S.

**CURVE TABLE**

CURVE NO.	DELTA	RADIUS	LENGTH	TANGENT	CHORD	BEARING
1.	31° 30' 10"	1030.00'	566.32'	290.52'	559.21'	S89° 47' 16"E
2.	176° 38' 33"	55.00'	169.56'	---	109.95'	S59° 17' 31"E
3.	02° 04' 34"	1380.00'	50.00'	25.00'	50.00'	S35° 47' 17"W
4.	39° 56' 18"	1355.00'	944.51'	492.35'	925.50'	N55° 45' 34"E
5.	19° 49' 36"	1355.00'	468.89'	236.81'	466.55'	N25° 52' 37"E
6.	18° 39' 14"	1205.00'	392.31'	197.91'	390.58'	N25° 17' 25"E
7.	18° 30' 18"	1055.00'	340.74'	171.87'	339.26'	N25° 12' 57"E
8.	176° 41' 01"	55.00'	169.60'	---	109.95'	N60° 57' 48"E

**LINE TABLE**

LINE NO.	BEARING	DISTANCE
1.	N 30° 42' 29" E	21.21'
2.	S 29° 02' 12" E	21.21'
3.	N 74° 02' 12" W	61.26'
4.	N 15° 57' 48" E	25.82'
5.	S 74° 02' 12" E	61.26'

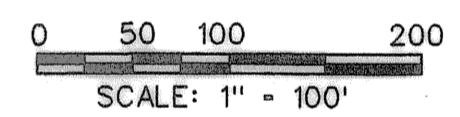


SET CONCRETE MONUMENT  
CITY OF ROCKWALL GRID  
SYSTEM COORDINATES

X	Y
2594913.205	7037184.189
ELEV = 530.0	

SET CONCRETE MONUMENT  
CITY OF ROCKWALL GRID  
SYSTEM COORDINATES

X	Y
2594313.294	7036407.980
ELEV = 510.10	



FINAL PLAT  
OF  
**STONE CREEK  
PHASE IV**  
OUT OF THE  
S. KING SURVEY, ABSTRACT NO. 131  
IN THE  
CITY OF ROCKWALL  
ROCKWALL COUNTY, TEXAS  
OWNERS  
**STONE CREEK PHASE IV 60's POD, LTD.**  
8214 WESTCHESTER DRIVE, SUITE 710  
DALLAS, TEXAS 75219  
214-522-4945  
PREPARED BY  
**CORWIN ENGINEERING, INC.**  
200 W. BELMONT, SUITE E  
ALLEN, TEXAS 75013  
972-396-1200

STONE CREEK BALANCE, LTD.  
CLERKS FILE NO. 2007-00375394

TOTAL LOTS 59  
TOTAL ACRES 27.311

MARCH 2013 SCALE 1" = 100'

FILED FOR RECORD  
ROCKWALL COUNTY, TEXAS  
13 JUN 12 PM 1:47  
SHELL HILLER  
ROCKWALL COUNTY CLERK  
DEPUTY