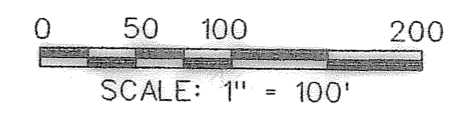
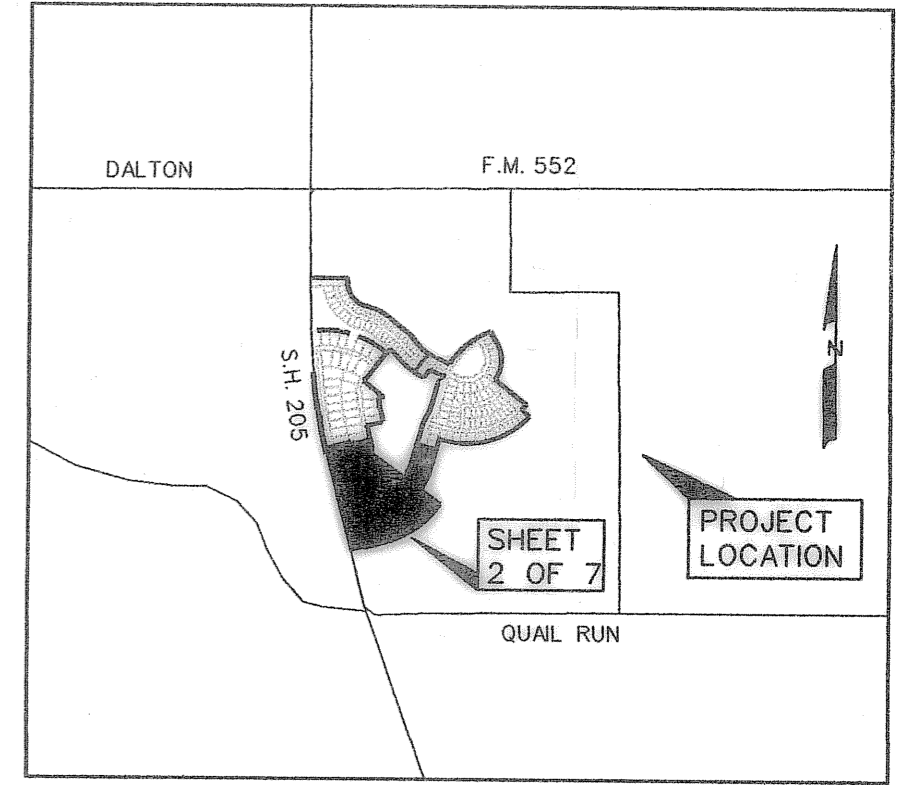


ALL STREET INTERSECTIONS  
VISIBILITY & SIDEWALK EASEMENT DETAIL  
N.T.S.



**NOTES**

- Bearing are referenced to 392.938 acre tract (Vol. 64, Pg.22).
- All lot lines are radial or perpendicular to the street unless otherwise noted by bearing.
- 1/2" iron rods with "CORWIN ENGR. INC." caps set at all boundary corners, block corners, points of curvature, points of tangency, and angle points in public right-of-way unless otherwise noted.
- B.L. - Building Line.  
U.E. - Utility Easements.  
C.M. - Controlling Monument.  
D.E. - Drainage Easement  
V.A.M.S. - Visibility, Maintenance & Sidewalk Easement  
BFE - Base Flood Elevation  
- Street name change
- All open spaces, drainage areas and other common areas shall be maintained by the Homeowners Association.



LOCATION MAP  
N.T.S.

REPLAT  
OF  
**STONE CREEK  
PHASE I**  
OUT OF THE  
W.T. DEWEESE SURVEY, ABSTRACT NO. 71  
S. KING SURVEY, ABSTRACT NO. 131  
IN THE  
CITY OF ROCKWALL  
ROCKWALL COUNTY, TEXAS

OWNERS  
**STONE CREEK SF., LTD.**  
3838 OAK LAWN AVE., SUITE 1212  
DALLAS, TEXAS 75219  
214-522-4945  
PREPARED BY  
**CORWIN ENGINEERING, INC.**  
200 W. BELMONT, SUITE E  
ALLEN, TEXAS 75013  
972-396-1200

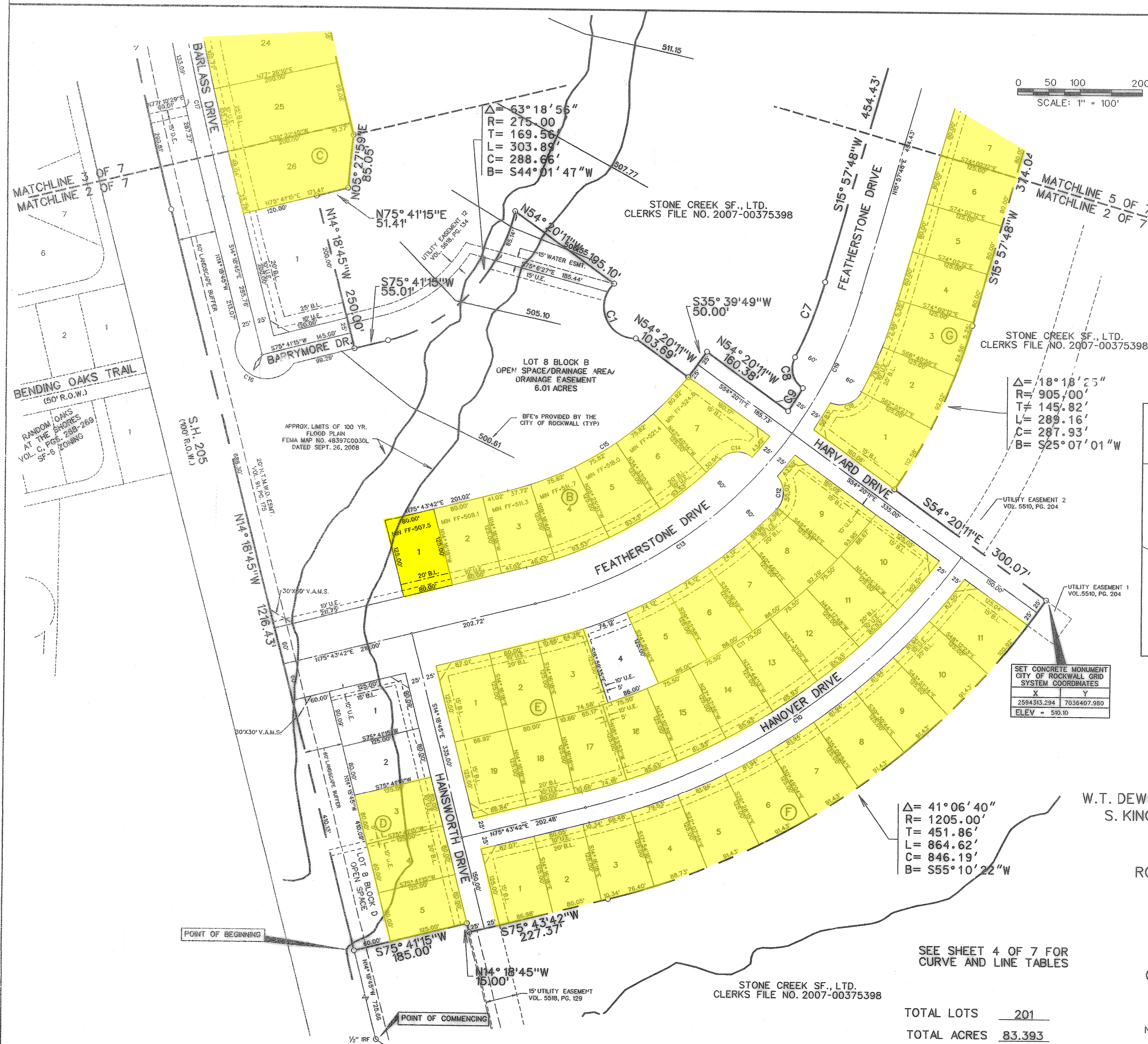
NOVEMBER 2008 SCALE 1" = 100'

$\Delta = 41^{\circ}06'40''$   
 $R = 1205.00'$   
 $T = 451.86'$   
 $L = 864.62'$   
 $C = 846.19'$   
 $B = S55^{\circ}10'22''W$

SEE SHEET 4 OF 7 FOR  
CURVE AND LINE TABLES

TOTAL LOTS 201  
TOTAL ACRES 83.393

STONE CREEK SF., LTD.  
CLERKS FILE NO. 2007-00375398



$\Delta = 03^{\circ}07'00''$   
 $R = 5680.00'$   
 $T = 154.52'$   
 $L = 308.97'$   
 $C = 308.93'$   
 $B = N02^{\circ}30'27''W$

$\Delta = 1^{\circ}$   
 $R = 475.$   
 $T = 65.96$   
 $L = 131.08'$   
 $C = 130.66'$   
 $B = S43^{\circ}05'20''E$

$\Delta = 27^{\circ}51'5''$   
 $R = 625.00'$   
 $T = 155.04'$   
 $L = 303.95'$   
 $C = 300.97'$   
 $B = S49^{\circ}06'8''E$

$\Delta = 30^{\circ}59'47''$   
 $R = 920.00'$   
 $T = 255.11'$   
 $L = 497.71'$   
 $C = 491.66'$   
 $B = S49^{\circ}17'54''E$

$\Delta = 21^{\circ}33'29''$   
 $R = 475.00'$   
 $T = 90.43'$   
 $L = 178.72'$   
 $C = 177.67'$   
 $B = N03^{\circ}21'43''E$

$\Delta = 10^{\circ}15'35''$   
 $R = 5680.00'$   
 $T = 509.91'$   
 $L = 1017.09'$   
 $C = 1015.74'$   
 $B = N09^{\circ}11'27''W$

$\Delta = 06^{\circ}24'38''$   
 $R = 5370.00'$   
 $T = 300.72'$   
 $L = 600.82'$   
 $C = 600.51'$   
 $B = N10^{\circ}37'20''W$

$\Delta = 63^{\circ}18'56''$   
 $R = 275.00'$   
 $T = 169.56'$   
 $L = 303.85'$   
 $C = 288.66'$   
 $B = S44^{\circ}01'47''W$

LOT 71 BLOCK A  
 OPEN SPACE  
 6.79 ACRES

STONE CREEK SF., LTD.  
 CLERKS FILE NO. 2007-00375398

APPROX. LIMITS OF 100 YR.  
 FLOOD PLAIN  
 FEMA MAP NO. 48397C0030L  
 DATED SEPT. 26, 2008

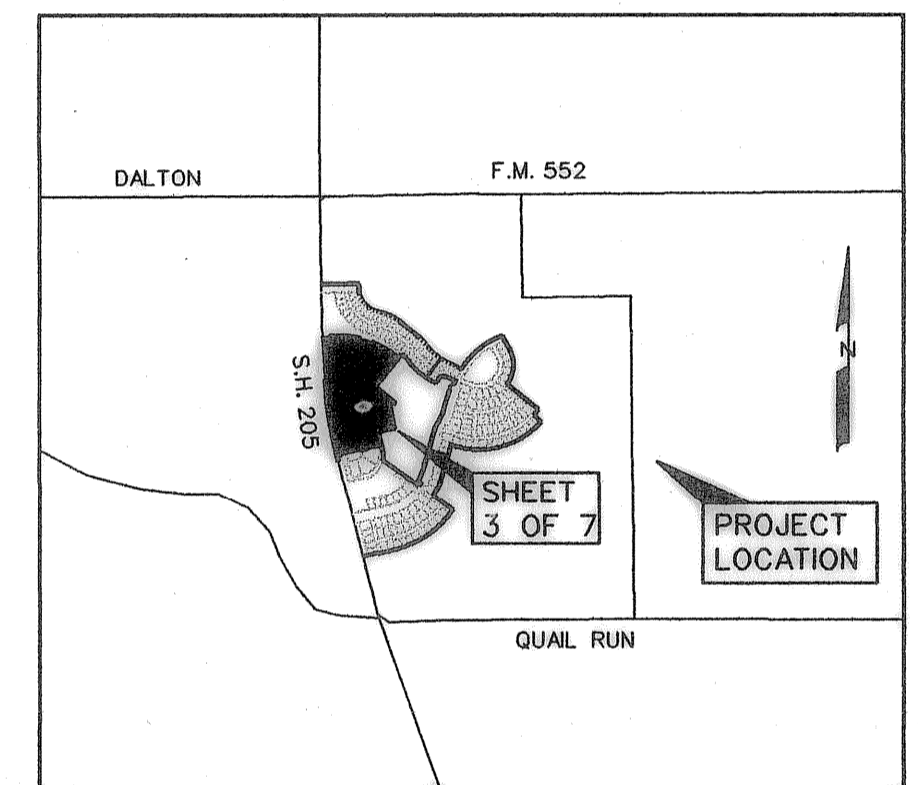
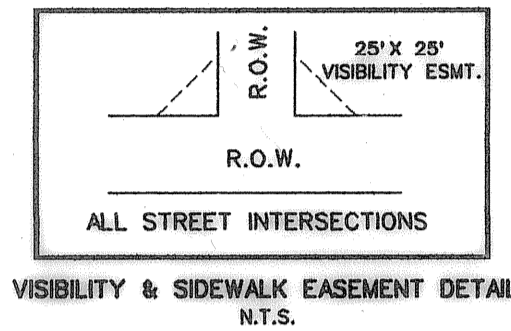
NOTE:  
 THE PURPOSE OF THIS REPLAT  
 IS TO CORRECT SCRIVENER ERROR ON THE  
 APPROVED FINAL PLAT AND ADD ONE LOT TO  
 BLOCK K.

**NOTES**

- Bearing are referenced to 392.938 acre tract (Vol. 64, Pg.22).
- All lot lines are radial or perpendicular to the street unless otherwise noted by bearing.
- 1/2" iron rods with "CORWIN ENGR. INC." caps set at all boundary corners, block corners, points of curvature, points of tangency, and angle points in public right-of-way unless otherwise noted.
- B.L. - Building Line.  
U.E. - Utility Easements.  
C.M. - Controlling Monument.  
D.E. - Drainage Easement  
V.A.M.S. - Visibility, Maintenance & Sidewalk Easement  
BFE - Base Flood Elevation  
↕ - Street name change
- All open spaces, drainage areas and other common areas shall be maintained by the Homeowners Association.

SEE SHEET 4 OF 7 FOR  
 CURVE AND LINE TABLES

0 50 100 200  
 SCALE: 1" = 100'



REPLAT  
 OF  
**STONE CREEK  
 PHASE I**  
 OUT OF THE  
 W.T. DEWEESE SURVEY, ABSTRACT NO. 71  
 S. KING SURVEY, ABSTRACT NO. 131

IN THE  
**CITY OF ROCKWALL  
 ROCKWALL COUNTY, TEXAS**

**OWNERS**  
**STONE CREEK SF., LTD.**  
 3838 OAK LAWN AVE., SUITE 1212  
 DALLAS, TEXAS 75219  
 214-522-4945

**PREPARED BY**  
**CORWIN ENGINEERING, INC.**  
 200 W. BELMONT, SUITE E  
 ALLEN, TEXAS 75013  
 972-396-1200

NOVEMBER 2008 SCALE 1" = 100'

G-361

STONE CREEK SF., LTD.  
CLERKS FILE NO. 2007-00375398

SET CONCRETE MONUMENT CITY OF ROCKWALL GRID SYSTEM COORDINATES	
X	Y
2593164.354	7039170.206
ELEV = 558.90	

0 50 100 200  
SCALE: 1" = 100'

LINE TABLE

LINE NO.	BEARING	DISTANCE
1.	S 15° 57' 48" W	18.43'
2.	S 07° 46' 03" E	27.12'
3.	S 41° 08' 58" E	21.08'
4.	S 50° 59' 37" E	30.81'
5.	S 50° 59' 39" E	37.97'
6.	S 50° 59' 39" E	58.55'
7.	S 69° 07' 33" E	138.56'
8.	N 85° 56' 09" E	50.00'

CURVE TABLE

CURVE NO.	DELTA	RADIUS	LENGTH	TANGENT	CHORD	BEARING
1.	138° 24' 25"	50.00'	120.78'	---	93.48'	N22° 00' 11" W
2.	02° 53' 33"	275.00'	13.88'	6.94'	13.88'	N37° 33' 34" E
3.	02° 12' 28"	800.00'	30.82'	15.42'	30.82'	S68° 01' 19" E
4.	02° 35' 38"	1000.0'	45.27'	22.64'	45.27'	S21° 39' 30" W
5.	78° 55' 03"	38.00'	52.34'	31.28'	48.30'	S57° 40' 59" W
6.	02° 15' 39"	1030.0'	40.64'	20.32'	40.64'	S17° 05' 38" W
7.	11° 10' 45"	660.00'	128.77'	64.59'	128.57'	S21° 33' 11" W
8.	83° 54' 55"	38.00'	55.65'	34.16'	50.81'	S14° 48' 54" E
9.	03° 35' 24"	695.00'	43.55'	21.78'	43.54'	S32° 03' 15" W
10.	39° 54' 08"	1055.0'	734.73'	382.97'	719.97'	N55° 46' 39" E
11.	38° 17' 32"	905.00'	604.83'	314.20'	593.64'	N56° 34' 57" E
12.	86° 55' 59"	38.00'	57.66'	36.02'	52.28'	N00° 37' 20" E
13.	39° 49' 35"	720.00'	500.47'	260.82'	490.46'	N55° 48' 55" E
14.	83° 54' 55"	38.00'	55.65'	34.16'	50.81'	S86° 36' 04" W
15.	37° 03' 55"	535.00'	346.10'	179.35'	340.09'	N57° 11' 45" E
16.	178° 51' 14"	50.00'	158.08'	---	100.00'	N59° 18' 45" W
17.	03° 23' 15"	5595.00'	330.78'	165.44'	330.73'	S12° 37' 37" E
18.	86° 55' 59"	38.00'	57.66'	36.02'	52.28'	N70° 36' 33" E
19.	19° 56' 19"	720.00'	250.56'	126.56'	249.29'	N55° 55' 58" E
20.	85° 28' 19"	38.00'	56.69'	35.11'	51.58'	N26° 46' 21" W
21.	07° 16' 41"	510.00'	64.78'	32.44'	64.74'	N1° 36' 09" E
22.	09° 35' 56"	510.00'	85.44'	42.82'	85.34'	N28° 02' 27" E
23.	16° 52' 37"	500.00'	147.28'	74.18'	146.75'	N24° 24' 07" E
24.	87° 32' 53"	38.00'	58.06'	36.41'	52.58'	N72° 26' 23" E
25.	11° 44' 47"	885.00'	181.44'	91.04'	181.12'	S78° 53' 35" E
26.	11° 59' 05"	885.00'	185.12'	92.90'	184.78'	N88° 13' 29" E
27.	23° 43' 52"	250.00'	103.55'	52.53'	102.81'	S04° 05' 52" W
28.	43° 52' 44"	885.00'	677.76'	356.48'	661.32'	N60° 17' 34" E
29.	01° 37' 07"	885.00'	25.00'	12.50'	25.00'	N37° 32' 39" E
30.	51° 56' 19"	730.00'	661.74'	355.56'	639.31'	N66° 17' 03" E
31.	55° 51' 49"	575.00'	560.63'	304.86'	538.68'	N66° 17' 07" E
32.	160° 48' 02"	50.00'	140.32'	---	98.60'	N47° 44' 51" E
33.	66° 41' 34"	420.00'	488.88'	276.38'	461.75'	N75° 06' 44" E
34.	76° 43' 18"	38.00'	50.88'	30.08'	47.17'	N20° 14' 19" W
35.	08° 32' 05"	970.00'	144.49'	72.38'	144.36'	N2° 13' 51" E
36.	72° 31' 14"	260.00'	329.09'	190.71'	307.56'	N74° 36' 49" E
37.	68° 24' 01"	260.00'	310.39'	176.70'	292.28'	N04° 09' 12" E
38.	35° 51' 48"	970.00'	607.16'	313.89'	597.29'	N42° 25' 48" E
39.	09° 30' 01"	970.00'	160.83'	80.60'	160.65'	N65° 06' 42" E
40.	33° 56' 32"	775.00'	459.11'	236.51'	452.43'	N52° 09' 17" W
41.	15° 48' 38"	325.00'	89.68'	45.13'	89.40'	N43° 05' 20" W
42.	27° 38' 29"	465.00'	224.33'	114.39'	222.16'	N64° 48' 54" W
43.	77° 41' 11"	455.00'	616.93'	366.39'	570.74'	N39° 47' 32" W
44.	72° 54' 22"	600.00'	763.47'	443.22'	713.00'	S42° 10' 57" E
45.	27° 38' 29"	320.00'	154.38'	78.72'	152.89'	S64° 48' 54" E
46.	42° 33' 29"	1125.00'	835.62'	438.14'	816.55'	S72° 53' 09" E
47.	45° 22' 35"	900.00'	712.77'	376.26'	694.29'	S73° 40' 57" E
48.	17° 10' 08"	50.00'	163.91'	---	99.77'	N36° 43' 17" E
49.	06° 52' 20"	5595.00'	671.09'	335.95'	670.69'	N07° 29' 49" W

$\Delta = 68^\circ 15' 04"$   
R = 305.00'  
T = 206.70'  
L = 363.32'  
C = 342.21'  
B = S44° 30' 36" E

$\Delta = 27^\circ 38' 29"$   
R = 615.00'  
T = 151.29'  
L = 296.70'  
C = 293.83'  
B = S64° 48' 54" E

STONE CREEK SF., LTD.  
CLERKS FILE NO. 2007-00375398

$\Delta = 15^\circ 48' 38"$   
R = 475.00'  
T = 65.96'  
L = 131.08'  
C = 130.66'  
B = S43° 05' 20" E

$\Delta = 27^\circ 51' 51"$   
R = 625.00'  
T = 155.04'  
L = 303.95'  
C = 300.97'  
B = S49° 06' 57" E

$\Delta = 30^\circ 59' 47"$   
R = 920.00'  
T = 255.11'  
L = 497.71'  
C = 491.66'  
B = S49° 17' 54" E

REPLAT  
OF  
**STONE CREEK  
PHASE I**  
OUT OF THE  
W.T. DEWEESE SURVEY, ABSTRACT NO. 71  
S. KING SURVEY, ABSTRACT NO. 131

IN THE  
CITY OF ROCKWALL  
ROCKWALL COUNTY, TEXAS  
OWNERS  
STONE CREEK SF., LTD.  
3838 OAK LAWN AVE., SUITE 1212  
DALLAS, TEXAS 75219  
214-522-4945

PREPARED BY  
**CORWIN ENGINEERING, INC.**  
200 W. BELMONT, SUITE E  
ALLEN, TEXAS 75013  
972-396-1200

NOVEMBER 2008 SCALE 1" = 100'

S.H. 205  
(100' R.O.W.)

100° 56' 57" W  
456.84'

N89° 03' 03" E 459.98'

BORDEAUX DRIVE

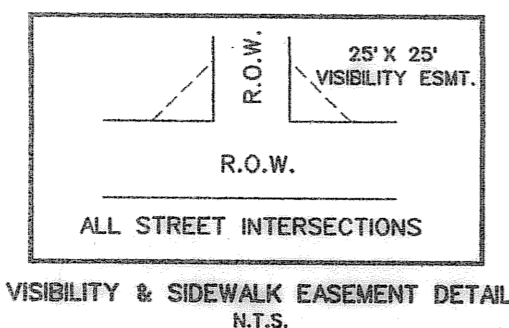
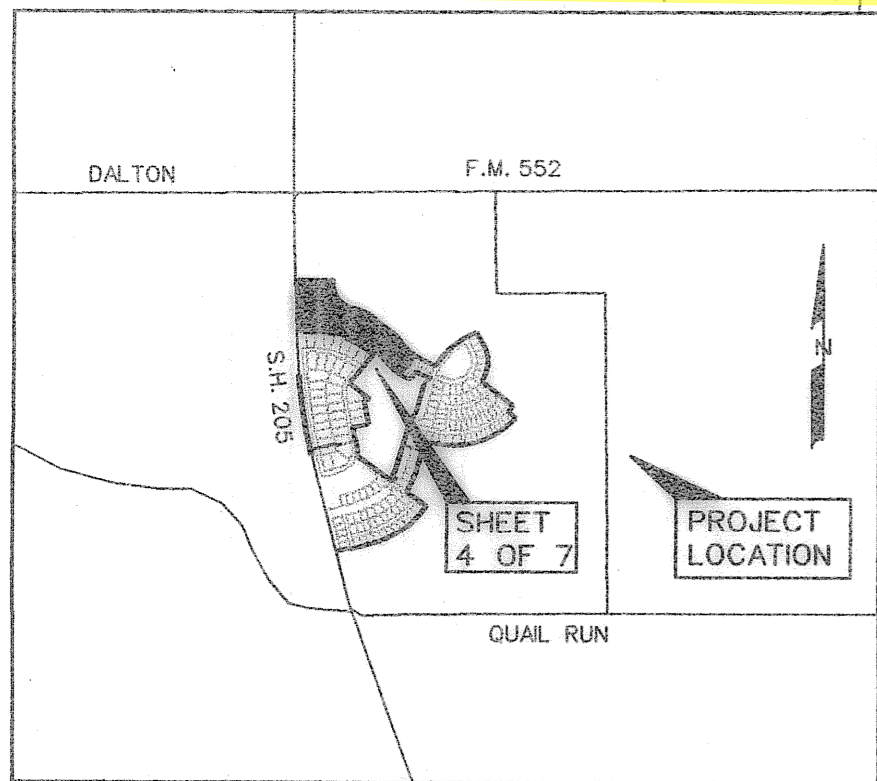
N89° 03' 03" E 305.86'

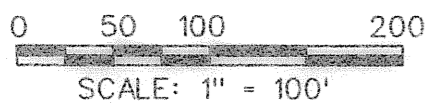
N89° 03' 03" E 154.12'

S00° 56' 57" E  
100.00'

LOT 71 BLOCK A  
OPEN SPACE  
6.79 ACRES

MATCHLINE 4 OF 7  
MATCHLINE 3 OF 7



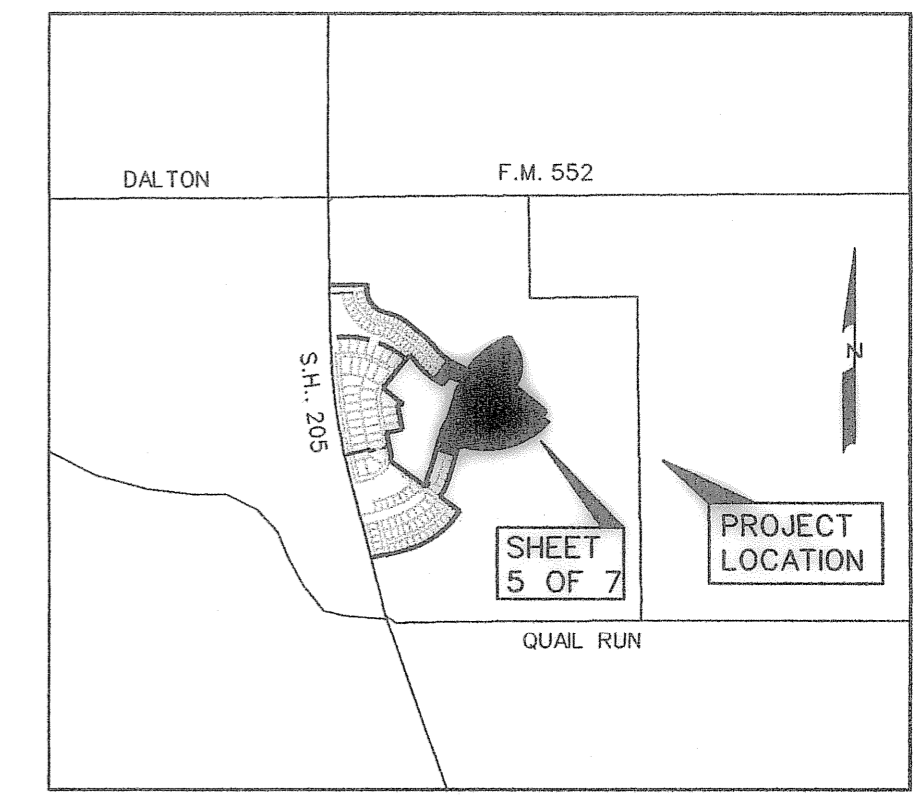


$\Delta = 37^\circ 40' 07''$   
 $R = 1000.00'$   
 $T = 341.10'$   
 $L = 657.44'$   
 $C = 645.66'$   
 $B = N50^\circ 43' 38'' E$

$\Delta = 27^\circ 51' 51''$   
 $R = 625.00'$   
 $T = 155.04'$   
 $L = 303.95'$   
 $C = 300.97'$   
 $B = S49^\circ 06' 57'' E$

STONE CREEK SF., LTD.  
CLERKS FILE NO. 2007-00375398

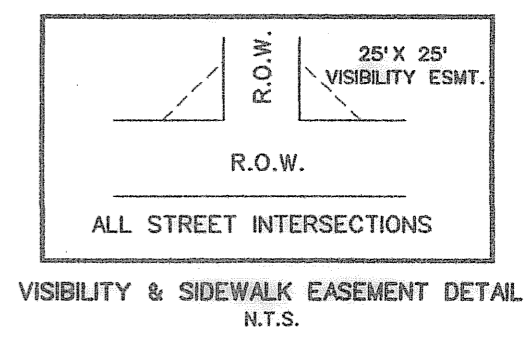
$\Delta = 64^\circ 59' 16''$   
 $R = 420.00'$   
 $T = 267.51'$   
 $L = 476.38'$   
 $C = 451.26'$   
 $B = S02^\circ 26' 49'' W$



LOCATION MAP  
N.T.S.

NOTES

- Bearing are referenced to 392.938 acre tract (Vol. 64, Pg.22).
- All lot lines are radial or perpendicular to the street unless otherwise noted by bearing.
- 1/2" iron rods with "CORWIN ENGR. INC." caps set at all boundary corners, block corners, points of curvature, points of tangency, and angle points in public right-of-way unless otherwise noted.
- B.L. - Building Line.  
U.E. - Utility Easements.  
C.M. - Controlling Monument.  
D.E. - Drainage Easement  
V.A.M.S. - Visibility, Maintenance & Sidewalk Easement  
- Street name change
- All open spaces, drainage areas and other common areas shall be maintained by the Homeowners Association.



STONE CREEK SF., LTD.  
CLERKS FILE NO. 2007-00375398

$\Delta = 16^\circ 52' 33''$   
 $R = 440.00'$   
 $T = 65.28'$   
 $L = 129.61'$   
 $C = 129.14'$   
 $B = S24^\circ 24' 07'' W$

$\Delta = 05^\circ 33' 53''$   
 $R = 910.00'$   
 $T = 44.23'$   
 $L = 88.38'$   
 $C = 88.35'$   
 $B = S39^\circ 33' 42'' W$

$\Delta = 16^\circ 52' 37''$   
 $R = 570.00'$   
 $T = 84.56'$   
 $L = 167.90'$   
 $C = 167.29'$   
 $B = S24^\circ 24' 07'' W$

STONE CREEK SF., LTD.  
CLERKS FILE NO. 2007-00375398

$\Delta = 63^\circ 37' 10''$   
 $R = 1030.00'$   
 $T = 638.87'$   
 $L = 1143.68'$   
 $C = 1085.83'$   
 $B = S74^\circ 09' 13'' W$

SEE SHEET 4 OF 7 FOR  
CURVE AND LINE TABLES

REPLAT  
 OF  
**STONE CREEK  
 PHASE I**  
 OUT OF THE  
 W.T. DEWEESE SURVEY, ABSTRACT NO. 71  
 S. KING SURVEY, ABSTRACT NO. 131

IN THE  
 CITY OF ROCKWALL  
 ROCKWALL COUNTY, TEXAS

OWNERS  
**STONE CREEK SF., LTD.**  
 3838 OAK LAWN AVE., SUITE 1212  
 DALLAS, TEXAS 75219  
 214-522-4945

PREPARED BY  
**CORWIN ENGINEERING, INC.**  
 200 W. BELMONT, SUITE E  
 ALLEN, TEXAS 75013  
 972-396-1200

NOVEMBER 2008 SCALE 1" = 100'

G-363