

ENGINEER/SURVEYOR
 DOUPHRADE & ASSOCIATES, INC.
 2235 RIDGE ROAD
 ROCKWALL, TEXAS 75087
 (972) 771-9004

OWNER/DEVELOPER
 J.H.B. JONES SURVEY, ABSTRACT NO. 124
 NATHAN BUTLER SURVEY, ABSTRACT NO. 21

FINAL PLAT
LAKEVIEW SUMMIT, PHASE IV
 97 LOTS - 38.056 AC.
 J.H.B. JONES SURVEY, ABSTRACT NO. 124
 NATHAN BUTLER SURVEY, ABSTRACT NO. 21
 CITY OF ROCKWALL
 ROCKWALL COUNTY, TEXAS

DOUPHRADE & ASSOCIATES, INC.
 ENGINEERING - PROJECT MANAGEMENT - SURVEYING
 2235 RIDGE ROAD
 ROCKWALL, TEXAS 75087
 PHONE: (972) 771-9004 FAX: (972) 771-9005

PROJECT: 9919-APPL
 DATE: JUNE 2006
 SCALE: 1"=100'
 DRAWN: D.L.R.
 CHK'D: W.L.D.

POINT OF BEGINNING
 R=650.00'
 L=17.62'
 Δ=1°33'11"
 CD=17.62'
 CB=S80°24'28"W

LOT 1A, BLOCK A
 10' LANDSCAPE
 BUFFER TO BE
 MAINTAINED
 BY H.O.A.

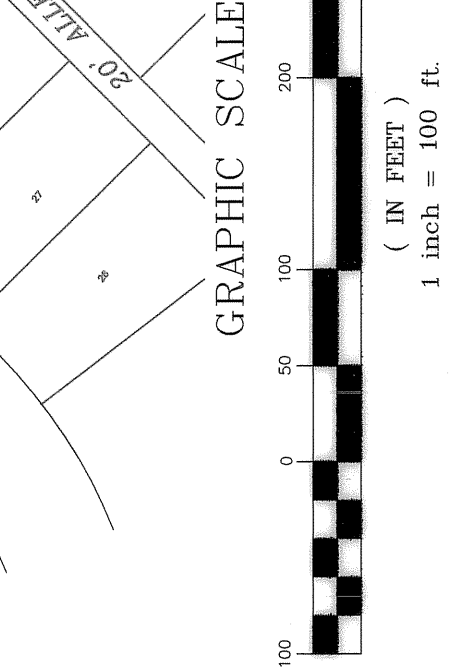
ROCKWALL ELEMENTARY
 SCHOOL NO. 9
 CAB. E. SLIDE 161
 P.R.R.C.T.

LOT 11, BLOCK B
 10' LANDSCAPE
 BUFFER TO BE
 MAINTAINED
 BY H.O.A.

CITY OF ROCKWALL CONTROL	RP
7035660.26	2590600.33
7034675.27	2590605.68
7035525.13	2590605.80
7035002.03	2590605.81
7033899.98	2590608.53
7033917.92	2590721.62
7033920.45	2590739.00
7035002.11	2590805.51
7034675.41	2590805.74
7035432.37	2590945.84
7035664.34	2590953.33
7035678.09	2591129.09
7034006.05	2591206.82
7035601.64	2591405.81
7035088.56	2591440.26
7034821.72	2591461.30
7034725.27	2591496.07
7034824.65	2591713.09
7034855.27	2591864.83
7034769.10	2591951.55
7034705.10	2591966.50
7034503.15	2592058.97

R=1450.00'
 L=1006.65'
 Δ=39°46'37"
 CD=986.55'
 CB=S59°44'34"W

LOT 55, BLOCK A
 10' LANDSCAPE
 BUFFER TO BE
 MAINTAINED
 BY H.O.A.



NOTE:
 NO REAR ENTRY ON LOTS 6-9 BLOCK A
 NO REAR ENTRY ON LOTS 17-22 BLOCK A

TYPICAL LOT CORNER VISIBILITY EASEMENTS
 15' X 15' WHERE ALLEYS INTERSECT STREETS
 20' X 20' WHERE INTERIOR STREETS INTERSECT INTERIOR STREETS
 25' X 25' WHERE INTERIOR STREETS INTERSECT MAIN STREETS

THE FAIRWAY POINTE
 AT THE SHORES
 PHASE ONE
 CABINET D. SLIDE 8
 P.R.R.C.T.

THE SHORES, PHASE III
 CABINET C. SLIDE 99
 P.R.R.C.T.

BUTLER CEMETERY
 NOTE: LOT 9A, BLOCK A TO BE FOR
 CEMETERY ACCESS & PARKING

NOTE: LOCATION OF
 100 YEAR FLOOD AREA

APPROX. LOCATION OF
 100 YEAR FLOOD AREA

LEGEND
 ◇ = STREET NAME CHANGE
 B.L. = BUILDING LINE
 D.E. = DRAINAGE EASEMENT

SEE DETAIL 1

UTIL. ESMT.
 & PEDESTRIAN
 ACCESS R.O.W.

NO REAR ENTRY ON LOTS 6-9 BLOCK A
 NO REAR ENTRY ON LOTS 17-22 BLOCK A

TYPICAL LOT CORNER VISIBILITY EASEMENTS
 15' X 15' WHERE ALLEYS INTERSECT STREETS
 20' X 20' WHERE INTERIOR STREETS INTERSECT INTERIOR STREETS
 25' X 25' WHERE INTERIOR STREETS INTERSECT MAIN STREETS

CITY OF ROCKWALL PARK
 LAKEVIEW SUMMIT PHASE 3

NOTE:
 NO REAR ENTRY ON LOTS 6-9 BLOCK A
 NO REAR ENTRY ON LOTS 17-22 BLOCK A

TYPICAL LOT CORNER VISIBILITY EASEMENTS
 15' X 15' WHERE ALLEYS INTERSECT STREETS
 20' X 20' WHERE INTERIOR STREETS INTERSECT INTERIOR STREETS
 25' X 25' WHERE INTERIOR STREETS INTERSECT MAIN STREETS

UTIL. ESMT.
 & PEDESTRIAN
 ACCESS R.O.W.

NO REAR ENTRY ON LOTS 6-9 BLOCK A
 NO REAR ENTRY ON LOTS 17-22 BLOCK A

TYPICAL LOT CORNER VISIBILITY EASEMENTS
 15' X 15' WHERE ALLEYS INTERSECT STREETS
 20' X 20' WHERE INTERIOR STREETS INTERSECT INTERIOR STREETS
 25' X 25' WHERE INTERIOR STREETS INTERSECT MAIN STREETS

UTIL. ESMT.
 & PEDESTRIAN
 ACCESS R.O.W.

NO REAR ENTRY ON LOTS 6-9 BLOCK A
 NO REAR ENTRY ON LOTS 17-22 BLOCK A

TYPICAL LOT CORNER VISIBILITY EASEMENTS
 15' X 15' WHERE ALLEYS INTERSECT STREETS
 20' X 20' WHERE INTERIOR STREETS INTERSECT INTERIOR STREETS
 25' X 25' WHERE INTERIOR STREETS INTERSECT MAIN STREETS