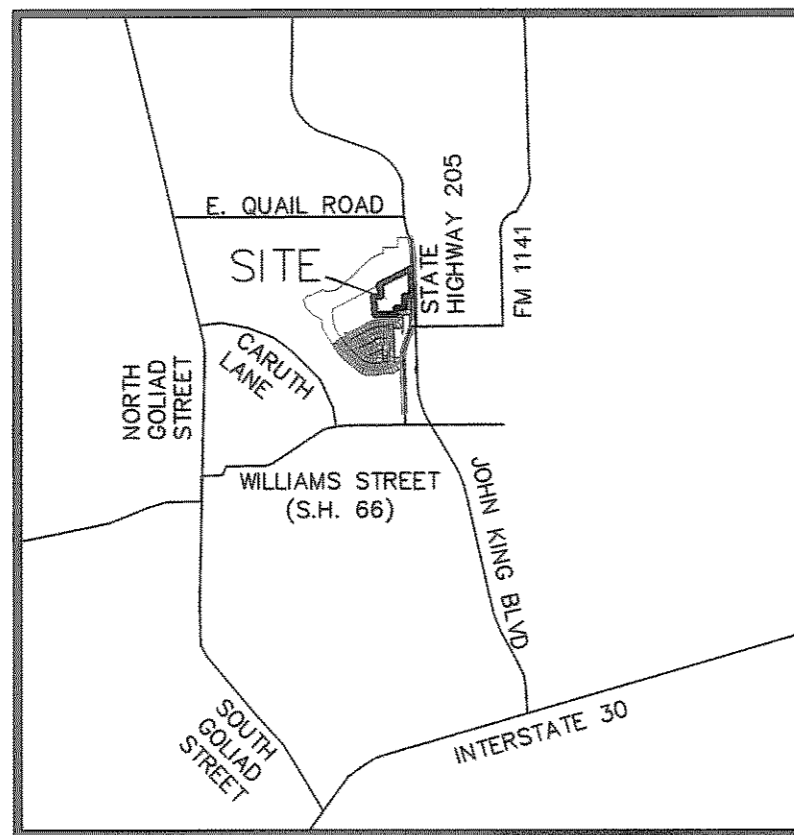


LOCATION MAP
(NOT TO SCALE)



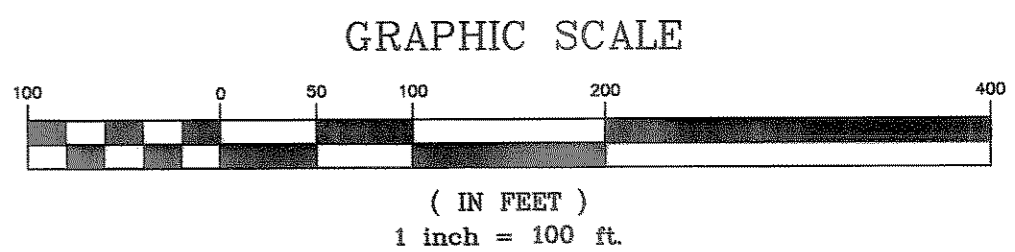
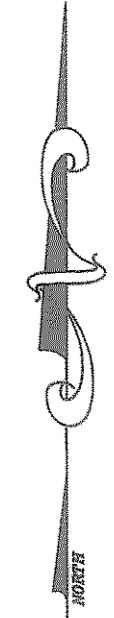
CURVE TABLE

NO.	DELTA	RADIUS	LENGTH	TANGENT	CHORD BEARING	CHORD
C1	7°53'18"	1500.00'	206.52'	103.42'	S 85°13'00" W	206.35'
C2	90°00'00"	36.00'	56.55'	36.00'	S 44°09'39" W	50.91'
C3	90°00'00"	36.00'	56.55'	36.00'	S 44°09'39" W	50.91'
C4	8°55'25"	1200.00'	186.89'	93.64'	S 84°41'57" W	186.70'
C5	6°49'38"	1350.00'	160.86'	80.53'	S 85°44'50" W	160.77'
C6	301°03'40"	57.50'	302.13'	32.49'	S 61°15'44" W	56.58'
C7	305°54'19"	57.50'	307.00'	29.36'	S 72°07'44" W	52.29'
C8	305°51'39"	57.50'	306.95'	29.39'	S 72°09'04" W	52.33'
C9	92°04'15"	26.03'	41.83'	26.99'	S 45°13'29" W	37.47'
C10	90°00'00"	26.00'	40.84'	26.00'	S 44°09'39" W	36.77'

LINE TABLE

LINE	BEARING	DISTANCE
L1	S89°09'39"W	23.42'
L2	S89°09'39"W	15.00'
L3	S89°09'39"W	15.00'
L4	S58°29'21"E	73.65'
L5	N27°14'09"W	7.22'
L6	N27°14'09"W	1.76'
L7	S27°14'09"E	66.45'
L8	N00°50'21"W	708.09'

FILED FOR RECORD
ROCKWALL COUNTY
12 JUL 31 AM 2:55
DEPUTY



CARUTH LAKES PHASE 7B LOT SUMMARY

8400 SQ. FT. LOTS 9
8399-7000 SQ. FT. LOTS 57
Total Lot Count 66

BLOCK/LOT	SQUARE FEET	ACRES
F-13	8,039	0.185
F-14	8,039	0.185
F-15	8,237	0.189
F-16	7,820	0.180
F-17	7,820	0.180
F-18	7,820	0.180
F-19	7,820	0.180
F-20	8,204	0.188
H-1	8,728	0.200
H-2	8,125	0.187
H-3	7,590	0.174
H-4	7,590	0.174
H-5	7,590	0.174
H-6	7,590	0.174
H-7	7,590	0.174
H-8	7,590	0.174
H-9	7,590	0.174
H-10	7,590	0.174
H-11	8,165	0.187
H-12	8,165	0.187
H-13	7,360	0.169
H-14	7,360	0.169
H-15	7,360	0.169
H-16	7,360	0.169
H-17	7,360	0.169
H-18	7,360	0.169
H-19	7,360	0.169
H-20	7,360	0.169
H-21	7,736	0.178
H-22	8,818	0.202
K-5	12,464	0.286
K-6	7,227	0.166
K-7	7,411	0.170
K-8	7,411	0.170
K-9	8,165	0.187
L-1	8,165	0.187
L-2	7,130	0.164
L-3	7,130	0.164
L-4	7,130	0.164
L-5	7,100	0.163
L-6	12,000	0.275
L-7	9,625	0.221
L-8	7,026	0.161
L-9	7,065	0.162
L-10	7,130	0.164
L-11	7,130	0.164
L-12	7,130	0.164
L-13	7,130	0.164
L-14	8,165	0.187
M-1	9,311	0.214
M-2	9,082	0.208
M-3	7,817	0.179
M-4	7,817	0.179
M-5	7,817	0.179
M-6	7,817	0.179
M-7	7,817	0.179
M-8	8,024	0.184
M-9	12,670	0.291
M-10	11,553	0.265
M-11	7,333	0.168
M-12	7,478	0.172
M-13	7,478	0.172
M-14	7,478	0.172
M-15	7,478	0.172
M-16	7,938	0.182
M-17	8,168	0.188

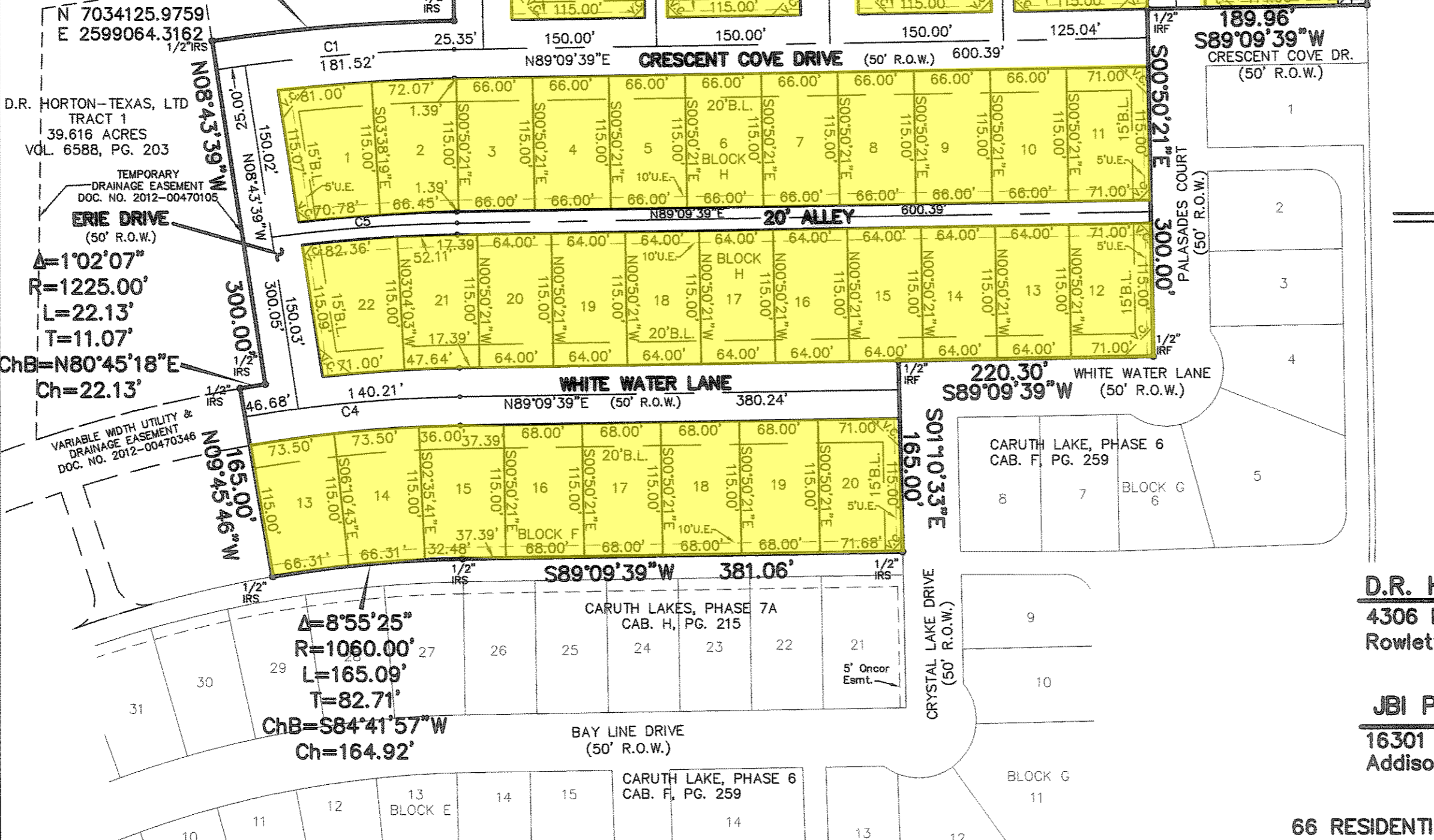
TEMPORARY ACCESS EASEMENT
DOC. NO. 2012-00470109
15' WATER ESMT.
DOC. NO. 2012-00470108

$\Delta=152°01'57"$
 $R=57.50'$
 $L=152.57'$
 $T=230.90'$
 $ChB=N13°15'08"W$
 $Ch=111.59'$

$\Delta=7°54'05"$
 $R=1525.00'$
 $L=210.31'$
 $T=105.32'$
 $ChB=N85°13'24"E$
 $Ch=210.14'$

$\Delta=1°02'07"$
 $R=1225.00'$
 $L=22.13'$
 $T=11.07'$
 $ChB=N80°45'18"E$
 $Ch=22.13'$

$\Delta=8°55'25"$
 $R=1060.00'$
 $L=165.09'$
 $T=82.71'$
 $ChB=S84°41'57"W$
 $Ch=164.92'$



- LEGEND
- IRF IRON ROD FOUND
 - IRS IRON ROD SET
 - R.O.W. RIGHT-OF-WAY
 - P.O.B. POINT OF BEGINNING
 - B.L. BUILDING LINE
 - D.E. DRAINAGE EASEMENT
 - V.C. 10' X 10' VISIBILITY CLIP AT ALLEY INTERSECTION
 - V.C. 25' X 25' VISIBILITY CLIP AT STREET INTERSECTION
 - U.E. UTILITY EASEMENT

BEARINGS ARE BASED ON MONUMENTS FOUND ALONG THE NORTH LINE OF CARUTH LAKE, PHASE 6 AN ADDITION TO THE CITY OF ROCKWALL, AS RECORDED IN CABINET F, PAGE 259, PLAT RECORDS OF ROCKWALL COUNTY.

FINAL PLAT
CARUTH LAKES, PHASE 7B

17.182 ACRES OUT OF THE
SAMUEL S. McCURRY SURVEY,
ABSTRACT NO. 146

66 RESIDENTIAL LOTS

CITY OF ROCKWALL, ROCKWALL COUNTY, TEXAS

D.R. HORTON - TEXAS, LTD. OWNER
4306 Miller Road, Suite A (214) 607-4244
Rowlett, Texas 75088

JBI PARTNERS, INC. SURVEYOR/ENGINEER
16301 Quorum Drive, Suite 200 B (972)248-7676
Addison, Texas 75001

Plotted by: mharp Plot Date: 7/9/2012 9:09 AM
Drawing: H:\Projects\HOE132\dwg\Plats\HOE132PT-PHASE7B.dwg Saved By: mharp Save Time: 7/9/2012 8:47 AM